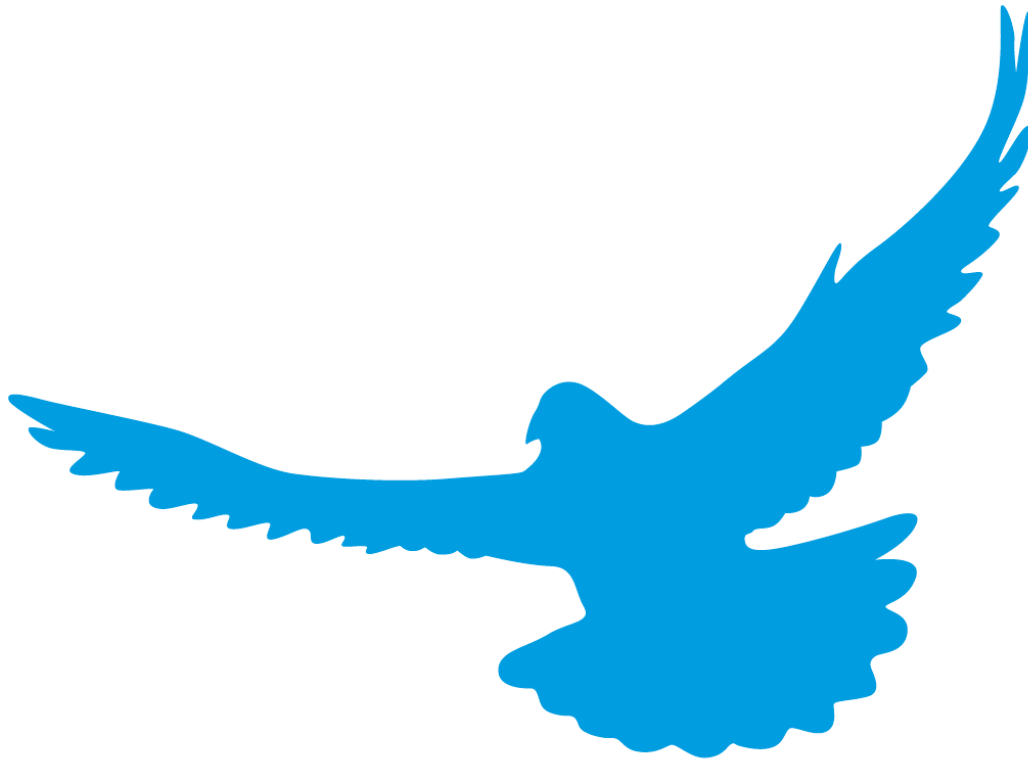


Verband Deutscher Briefftaubenzüchter e.V.

Regionalverband : 652 - Bayrischer Wald

Passau - Waldkirchen



Wettflug KW 38

vom

20.09.2020

Michelstadt N

349 km

W E T T F L U G B E R I C H T V O M 20.09.20 MICHELSTADT N LISTE 0182-00

DER AUFLASS ERFOLGTE * am 20.09.20 um 09.00 Uhr in Michelstadt N

AUFLASSPLATZ * Segelflugplatz 2018 Koordinaten B 494319,7 L 090508,6
MITTLERE ENTFERNUNG * 349 Kilometer für die Gesamtliste

WETTER AM AUFLASSORT * Sonnig,Gute Sicht,Leicht bew,Schwacher S-W. Wind
TEMPERATUR * 14 Grad

WETTER IN DER HEIMAT * Sonnig,Gute Sicht,Wolkenlos,Schwacher S-0. Wind
TEMPERATUR * 24 Grad

ES WAREN BETEILIGT * 24 Züchter mit 1181 Tauben

BETEILIGTE REISEVEREINIGUNGEN * 652/02 Passau Flug 39-352 km
652/04 Waldkirchen Flug 39-346 km

ANKUNFT DER ERSTEN PREISTAUBE * 13.40.29 Uhr bei : Schauberger M.
RV 652/04-Waldkirchen Verein 08 Schlagvermessung 361.025

ANKUNFT DER LETZTEN PREISTAUBE * 14.03.49 Uhr bei : Simmel Paul.M.u.S.
RV 652/04-Waldkirchen Verein 26 Schlagvermessung 349.998

Bei der Zeitverrechnung wurden für 100 Meter Differenz von der mittleren Entfernung 08,00 Sekunden in Anrechnung gebracht. Konkursdauer = 32 Min

Einwendungen gegen diese Preisliste werden nur mit dem gültigen Formular bei den bekannten Reklamations-Stellen bis zum **05.10.20** angenommen.

V E R A N S T A L T E R * RegV 652 Bayrischer Wald

F L U G L E I T U N G * Rothkopf, Klaus **Zert.-Nr.:**192-2005

Ausrechnung und Druck dieser Preisliste erfolgte nach den Bestimmungen der Reiseordnung des Verbandes deutscher Briefftaubenzüchter e.V. durch das Preislistenprogramm mit der Zertififikationsnr.: P153 Version 20/001

W E T T F L U G - Z U S A M M E N S T E L L U N G

| NR | VBNR. | VEREINSNAME | ZÜ. | GSMT | GESETZTE TAUBEN | | | | PREISE | | % | |
|------------------------|-------|----------------------|-----|------|-----------------|----|-----|-----|--------|-----|------|------|
| | | | | | AM | AW | Jäm | JäW | FG | RV | FG | RV |
| 01 | 04834 | 04834 Wegscheid | 1 | 63 | | | | | 15 | 16 | 23,8 | 25,4 |
| 02 | 05007 | 05007 GERMANIA 1900 | 1 | 40 | | | | | 15 | 17 | 37,5 | 42,5 |
| 04 | 05270 | 05270 Obernzell | 1 | 39 | | | | | 10 | 13 | 25,6 | 33,3 |
| 07 | 05496 | 05496 Hutthurm | 1 | 38 | | | | | 17 | 19 | 44,7 | 50,0 |
| 09 | 06616 | 06616 Wegscheid | 1 | 45 | | | | | 3 | 4 | 6,7 | 8,9 |
| 13 | 06883 | 06883 Buechlberg | 4 | 160 | | | | | 35 | 40 | 21,9 | 25,0 |
| 14 | 00454 | 00454 Vendelsberg | 2 | 162 | | | | | 68 | 74 | 42,0 | 45,7 |
| ----- | | | | | | | | | | | | |
| 652/02 | -1 | Passau | 11 | 547 | | | | | 163 | 183 | 29,8 | 33,5 |
| ----- | | | | | | | | | | | | |
| 05 | 05170 | 05170 Roehrnbach | 1 | 53 | | | | | 27 | 27 | 50,9 | 50,9 |
| 06 | 05470 | 05470 Harsdorf | 2 | 107 | | | | | 28 | 24 | 26,2 | 22,4 |
| 07 | 06529 | 06529 Harsdorf | 1 | 43 | | | | | 4 | 3 | 9,3 | 7,0 |
| 08 | 07215 | 07215 Neureichenau | 2 | 94 | | | | | 27 | 24 | 28,7 | 25,5 |
| 09 | 07515 | 07515 Wotsmansreuth | 1 | 67 | | | | | 40 | 38 | 59,7 | 56,7 |
| 25 | 07074 | 7074 Vorderfreundorf | 2 | 65 | | | | | 28 | 24 | 43,1 | 36,9 |
| 26 | 07075 | 7075 Vorderfreundorf | 2 | 84 | | | | | 36 | 35 | 42,9 | 41,7 |
| 27 | 07040 | 07040 Grainet | 2 | 121 | | | | | 41 | 37 | 33,9 | 30,6 |
| ----- | | | | | | | | | | | | |
| 652/04 | -1 | Waldkirchen | 13 | 634 | | | | | 231 | 212 | 36,4 | 33,4 |
| ----- | | | | | | | | | | | | |
| -----SUMME GESAMTLISTE | | | | | | | | | | | | |
| 349 KM | | | 24 | 1181 | | | | | 394 | 395 | 33,4 | 33,4 |

ERSTE UND LETZTE KONKURSE

| KONKURRENZ | RANG | ZÜCHTER | RINGNR | ANKUNFT | GESCHWINDIGKEIT | ENTFERNUNG |
|---------------------------|------|----------------------------------|---------------|----------|-----------------|------------|
| Fluggemeinschaft | | | | | | |
| Erster Konkurs: | 1. | 652/04 08.002 Schaubberger M. | 7215 20 0622 | 13:40:29 | 1287,153 M/Min | 361,025 Km |
| Letzter Konkurs: | 394. | 652/04 26.003 Simmel Paul.M.u.S. | 7075 20 0120 | 14:03:49 | 1152,004 M/Min | 349,998 Km |
| 652/02 Passau | | | | | | |
| Erster Konkurs: | 1. | 652/02 14.001 SG Büttner | RP05120 04129 | 13:27:25 | 1280,017 M/Min | 342,298 Km |
| Letzter Konkurs: | 183. | 652/02 13.007 Schwarz Sandro | 6883 20 0005 | 14:07:19 | 1144,575 M/Min | 351,747 Km |
| 652/04 Waldkirchen | | | | | | |
| Erster Konkurs: | 1. | 652/04 08.002 Schaubberger M. | 7215 20 0622 | 13:40:29 | 1287,153 M/Min | 361,025 Km |
| Letzter Konkurs: | 212. | 652/04 26.003 Simmel Paul.M.u.S. | 7075 20 0106 | 14:02:06 | 1158,550 M/Min | 349,998 Km |

| FG. PRS | RV. PRS | R V | Ring-Nr. | Züchtername | VE. | Ges./Prs. | | Ankunft | Uhr Dif | ASPKT | | Benannte | Gesamt | | | | | FOL PRS | | | | |
|---------|---------|-----|---------------|-----------------------|-----|-----------|----|----------|---------|-------------|-------|----------|--------|-------|----|----|----|---------|----|-----|-----|--|
| | | | | | | FG | RV | | | M/Min | -FG- | | -RV- | FL/HH | RE | RG | FG | | RV | | | |
| 1 | 1 | 04 | 7215 20 0622 | Schauberger M. | 08 | 43/14 | 12 | 13.40.29 | | 1287,153 | *100* | *100* | | 5/ | 4 | 1 | 2 | 4 | 4 | 4 | 4 | |
| 2 | 1 | 02 | RP05120 04129 | SG Büttner | 14 | 52/23 | 23 | 13.27.25 | | 1280,017 | 99,75 | *100* | V | 5/ | 4 | 1 | 1 | 4 | 4 | 7 | | |
| 3 | 2 | 02 | 5007 20 0332 | Allmannsberger/Kainz | 02 | 40/15 | 17 | 13.34.07 | | 1266,676 | 99,49 | 99,45 | V | 99 | 5/ | 5 | 1 | 2 | 5 | 5 | 26 | |
| 4 | 2 | 04 | 7215 20 0621 | Schauberger M. | 08 | | 2 | 13.45.19 | | 1265,348 | 99,24 | 99,53 | | 5/ | 4 | 1 | 1 | 4 | 4 | 64 | | |
| 5 | 3 | 04 | 7569 20 0228 | SG Gründinger | 05 | 53/27 | 27 | 13.33.15 | | 1264,790 | 98,98 | 99,06 | | 5/ | 2 | | | 2 | 2 | 8 | | |
| 6 | 3 | 02 | 0454 20 0011 | SG Pils / Tschache | 04 | 39/10 | 13 | 13.41.15 | | 1262,542 | 98,73 | 98,91 | | 99 | 5/ | 3 | 1 | 2 | 3 | 3 | 105 | |
| 7 | 4 | 02 | 0454 20 0001 | SG Büttner | 14 | | 2 | 13.31.11 | | 1262,238 | 98,48 | 98,36 | | 5/ | 3 | | | 3 | 3 | 11 | | |
| 8 | 4 | 04 | 7569 20 0233 | SG Gründinger | 05 | | 2 | 13.33.52 | | 1261,943 | 98,22 | 98,58 | | 5/ | 4 | | 1 | 4 | 4 | 17 | | |
| 9 | 5 | 04 | 7515 20 1203 | Geier L.+D.+A.+Ella | 09 | 67/40 | 38 | 13.32.34 | | 1260,110 | 97,97 | 98,11 | | 5/ | 5 | 1 | 2 | 5 | 5 | 10 | | |
| 10 | 6 | 04 | 7515 20 1181 | Geier L.+D.+A.+Ella | 09 | | 2 | 13.32.45 | | 1259,263 | 97,72 | 97,64 | V | 5/ | 5 | 1 | 2 | 5 | 5 | 20 | | |
| 11 | 5 | 02 | 0454 20 0002 | SG Büttner | 14 | | 3 | 13.32.08 | | 1257,832 | 97,46 | 97,81 | | 5/ | 1 | | | 1 | 1 | 12 | | |
| 12 | 6 | 02 | 0454 20 0040 | SG Büttner | 14 | | 4 | 13.32.33 | | 1255,909 | 97,21 | 97,27 | V | 5/ | 5 | 1 | 2 | 5 | 5 | 23 | | |
| 13 | 7 | 02 | 4834 20 0510 | Hazoth Hermann | 01 | 63/15 | 16 | 13.47.03 | | 1254,113 | 96,95 | 96,72 | V | 5/ | 4 | 1 | 2 | 4 | 4 | 48 | | |
| 14 | 7 | 04 | 7075 20 0129 | Simmel Paul.M.u.S. | 26 | 29/13 | 12 | 13.39.09 | | 1253,799 | 96,70 | 97,17 | | 5/ | 5 | 1 | 2 | 5 | 5 | 69 | | |
| 15 | 8 | 04 | 5470 20 0627 | Gubisch F.,Chr.,Jonas | 06 | 38/11 | 8 | 13.32.26 | | 2 1253,429 | 96,45 | 96,70 | | 5/ | 3 | | 1 | 3 | 3 | 85 | | |
| 16 | 8 | 02 | 6883 20 0224 | Krenn M. u. F. | 13 | 37/14 | 15 | 13.36.13 | | -1 1251,297 | 96,19 | 96,17 | | 5/ | 4 | | | 4 | 2 | 73 | | |
| 17 | 9 | 04 | 7569 20 0221 | SG Gründinger | 05 | | 3 | 13.36.21 | | 1250,602 | 95,94 | 96,23 | | 5/ | 4 | | 1 | 4 | 4 | 21 | | |
| 18 | 10 | 04 | 7075 20 0307 | SG Siglmüller | 26 | 55/23 | 23 | 13.34.52 | | -1 1248,966 | 95,69 | 95,75 | | 5/ | 3 | | | 2 | 3 | 41 | | |
| 19 | 11 | 04 | 5140 20 0065 | SG Weber/Simet | 06 | 69/17 | 16 | 13.32.42 | | 1248,676 | 95,43 | 95,28 | | 5/ | 3 | | | 2 | 2 | 25 | | |
| 20 | 12 | 04 | 7515 20 1172 | Geier L.+D.+A.+Ella | 09 | | 3 | 13.35.16 | | 1247,750 | 95,18 | 94,81 | | 5/ | 4 | | 1 | 4 | 4 | 22 | | |
| 21 | 13 | 04 | 7569 20 0223 | SG Gründinger | 05 | | 4 | 13.36.59 | | 1247,743 | 94,92 | 94,34 | | 5/ | 4 | 1 | 2 | 4 | 4 | 37 | | |
| 22 | 14 | 04 | NL 20 1094676 | Geier L.+D.+A.+Ella | 09 | | 4 | 13.35.27 | | 1246,920 | 94,67 | 93,87 | | 5/ | 2 | | | 2 | 2 | 47 | | |
| 23a | 9a | 02 | 0454 20 0032 | SG Büttner | 14 | | 5 | 13.34.38 | | 1246,382 | 94,42 | 95,63 | | 5/ | 3 | | 1 | 3 | 3 | 23 | | |
| 23b | 9b | 02 | 0454 20 0076 | SG Büttner | 14 | | 6 | 13.34.38 | | 1246,382 | 94,42 | 95,63 | | 5/ | 3 | 1 | 1 | 3 | 3 | 33 | | |
| 25 | 15 | 04 | 5140 20 0100 | SG Weber/Simet | 06 | | 2 | 13.33.25 | | 1245,403 | 93,91 | 93,40 | | 5/ | 2 | | | 2 | 2 | 83 | | |
| 26 | 11 | 02 | 5007 20 0309 | Allmannsberger/Kainz | 02 | | 2 | 13.38.55 | | 1244,877 | 93,65 | 94,54 | V | 5/ | 4 | 1 | 2 | 4 | 4 | 66 | | |
| 27 | 16 | 04 | 7040 20 0166 | Freund Heinrich | 27 | 78/31 | 29 | 13.38.41 | | 1242,349 | 93,40 | 92,92 | | 5/ | 3 | 1 | 1 | 3 | 3 | 40 | | |
| 28 | 17 | 04 | 7215 20 0664 | Hellauer L. | 08 | 51/13 | 12 | 13.51.33 | | -1 1241,898 | 93,15 | 92,45 | | 4/ | 3 | 1 | 2 | 3 | 3 | 63 | | |
| 29 | 12 | 02 | 0454 20 0232 | SG Dillinger/Kusser | 14 | 110/45 | 51 | 13.32.57 | | 1241,890 | 92,89 | 93,99 | | 5/ | 4 | | 1 | 4 | 3 | 31 | | |
| 30 | 18 | 04 | 7074 20 0862 | Schönberger Josef | 25 | 45/26 | 23 | 13.40.42 | | 1240,869 | 92,64 | 91,98 | | 5/ | 3 | | | 3 | 3 | 42 | | |
| 31 | 13 | 02 | 0454 20 0157 | SG Dillinger/Kusser | 14 | | 2 | 13.33.19 | | 1240,224 | 92,39 | 93,44 | V | 5/ | 5 | 1 | 2 | 5 | 5 | 32 | | |
| 32 | 14 | 02 | 0454 20 0256 | SG Dillinger/Kusser | 14 | | 3 | 13.33.27 | | 1239,620 | 92,13 | 92,90 | | 5/ | 3 | | | 3 | 3 | 36 | | |
| 33 | 15 | 02 | 0454 20 0048 | SG Büttner | 14 | | 7 | 13.36.19 | | 1238,789 | 91,88 | 92,35 | | 4/ | 2 | | | 2 | 2 | 46 | | |
| 34 | 16 | 02 | 0454 20 0072 | Schwarz Kurt | 13 | 32/15 | 15 | 13.42.21 | | 1237,712 | 91,62 | 91,80 | V | 5/ | 5 | | 2 | 5 | 5 | 35 | | |
| 35 | 17 | 02 | 6883 20 0393 | Schwarz Kurt | 13 | | 2 | 13.42.25 | | 1237,420 | 91,37 | 91,26 | | 5/ | 2 | | 1 | 2 | 2 | 55 | | |
| 36 | 18 | 02 | 5138 20 3486 | SG Dillinger/Kusser | 14 | | 4 | 13.34.06 | | 1236,680 | 91,12 | 90,71 | | 5/ | 3 | 1 | 1 | 3 | 2 | 45 | | |
| 37 | 19 | 04 | 7569 20 0236 | SG Gründinger | 05 | | 5 | 13.39.37 | | 1235,992 | 90,86 | 91,51 | | 5/ | 4 | 1 | 2 | 4 | 4 | 38 | | |
| 38 | 20 | 04 | 7569 20 0254 | SG Gründinger | 05 | | 6 | 13.39.40 | | 1235,771 | 90,61 | 91,04 | | 5/ | 3 | 1 | 1 | 3 | 3 | 39 | | |
| 39 | 21 | 04 | 7569 20 0220 | SG Gründinger | 05 | | 7 | 13.39.44 | | 1235,477 | 90,36 | 90,57 | | 5/ | 3 | | 1 | 3 | 3 | 44 | | |
| 40 | 22 | 04 | 5294 20 1102 | Freund Heinrich | 27 | | 2 | 13.40.16 | | 1235,331 | 90,10 | 90,09 | | 5/ | 1 | | | 1 | 1 | 43 | | |
| 41 | 23 | 04 | 7075 20 0311 | SG Siglmüller | 26 | | 2 | 13.38.00 | | -1 1234,890 | 89,85 | 89,62 | | 5/ | 3 | | | 2 | 3 | 68 | | |
| 42 | 24 | 04 | 7074 20 0747 | Schönberger Josef | 25 | | 2 | 13.42.17 | | 1233,909 | 89,59 | 89,15 | | 5/ | 2 | | | 1 | 2 | 79 | | |
| 43 | 25 | 04 | 7040 20 0130 | Freund Heinrich | 27 | | 3 | 13.40.41 | | 1233,497 | 89,34 | 88,68 | | 5/ | 2 | | 1 | 2 | 2 | 50 | | |
| 44 | 26 | 04 | 7569 20 0251 | SG Gründinger | 05 | | 8 | 13.40.21 | | 1232,759 | 89,09 | 88,21 | | 5/ | 5 | 1 | 2 | 5 | 5 | 52 | | |
| 45 | 19 | 02 | 0454 20 0185 | SG Dillinger/Kusser | 14 | | 5 | 13.35.01 | | 1232,558 | 88,83 | 90,16 | | 5/ | 2 | 1 | 1 | 2 | 2 | 51 | | |
| 46 | 20 | 02 | 0454 20 0058 | SG Büttner | 14 | | 8 | 13.37.53 | | 1231,805 | 88,58 | 89,62 | V | 5/ | 5 | 1 | 2 | 5 | 5 | 62 | | |
| 47 | 27 | 04 | 7515 20 1187 | Geier L.+D.+A.+Ella | 09 | | 5 | 13.39.05 | | 1230,686 | 88,32 | 87,74 | | 5/ | 5 | 1 | 2 | 5 | 5 | 49 | | |
| 48 | 21 | 02 | 4834 20 0567 | Hazoth Hermann | 01 | | 2 | 13.52.43 | | 1229,834 | 88,07 | 89,07 | | 5/ | 3 | | | 1 | 3 | 3 | 89 | |
| 49 | 28 | 04 | 7515 20 1191 | Geier L.+D.+A.+Ella | 09 | | 6 | 13.39.31 | | 1228,778 | 87,82 | 87,26 | | 5/ | 4 | 1 | 2 | 4 | 4 | 61 | | |
| 50 | 29 | 04 | 7040 20 0152 | Freund Heinrich | 27 | | 4 | 13.41.54 | | 1228,173 | 87,56 | 86,79 | | 5/ | 5 | | 1 | 4 | 5 | 71 | | |
| 51 | 22 | 02 | 5138 20 3272 | SG Dillinger/Kusser | 14 | | 6 | 13.36.02 | | 1228,018 | 87,31 | 88,52 | | 5/ | 3 | 1 | 1 | 3 | 3 | 53 | | |
| 52 | 30 | 04 | 7569 20 0218 | SG Gründinger | 05 | | 9 | 13.41.27 | | 1227,941 | 87,06 | 86,32 | | 5/ | 5 | 1 | 2 | 5 | 5 | 75 | | |
| 53 | 23 | 02 | 5138 20 3392 | SG Dillinger/Kusser | 14 | | 7 | 13.36.06 | | 1227,722 | 86,80 | 87,98 | | 4/ | 2 | | 1 | 2 | 2 | 54 | | |
| 54 | 24 | 02 | 5138 20 3397 | SG Dillinger/Kusser | 14 | | 8 | 13.36.10 | | 1227,425 | 86,55 | 87,43 | | 5/ | 2 | | 1 | 2 | 2 | 57 | | |
| 55 | 25 | 02 | 6883 20 0381 | Schwarz Kurt | 13 | | 3 | 13.44.52 | | 1226,777 | 86,29 | 86,89 | V | 5/ | 4 | | 1 | 4 | 4 | 59 | | |
| 56 | 26 | 02 | 6883 20 0024 | Schwarz Sandro | 13 | 56/ 6 | 9 | 13.46.44 | | 1226,739 | 86,04 | 86,34 | | 5/ | 5 | 1 | 2 | 5 | 4 | 149 | | |
| 57 | 27 | 02 | 0454 20 0183 | SG Dillinger/Kusser | 14 | | 9 | 13.36.21 | | 1226,611 | 85,79 | 85,79 | | 5/ | 3 | | 1 | 3 | 2 | 58 | | |
| 58 | 28 | 02 | 0454 20 0201 | SG Dillinger/Kusser | 14 | | 10 | 13.36.24 | | 1226,389 | 85,53 | 85,25 | | 5/ | 3 | | 1 | 3 | 3 | 60 | | |
| 59 | 29 | 02 | 6883 20 0399 | Schwarz Kurt | 13 | | 4 | 13.44.59 | | 1226,275 | 85,28 | 84,70 | | 5/ | 3 | | | 3 | 1 | 65 | | |
| 60 | 30 | 02 | 5138 20 3331 | SG Dillinger/Kusser | 14 | | 11 | 13.36.37 | | 1225,429 | 85,03 | 84,15 | | 5/ | 3 | 1 | 2 | 3 | 3 | 67 | | |
| 61 | 31 | 04 | 7515 20 1215 | Geier L.+D.+A.+Ella | 09 | | 7 | 13.40.17 | | 1225,417 | 84,77 | 85,85 | | 5/ | 3 | | 1 | 2 | 3 | 80 | | |
| 62 | 31 | 02 | 0454 20 0060 | SG Büttner | 14 | | 9 | 13.39.22 | | 1225,264 | 84,52 | 83,61 | | 5/ | 3 | 1 | 1 | 3 | 3 | 93 | | |
| 63 | 32 | 04 | 7215 20 0659 | Hellauer L. | 08 | | 2 | 13.55.45 | | -1 1224,262 | 84,26 | 85,38 | | 4/ | 4 | 1 | 1 | 4 | 4 | 82 | | |
| 64 | 33 | 04 | 7215 20 0636 | Schauberger M. | 08 | | 3 | 13.55.24 | | 1222,156 | 84,01 | 84,91 | | 5/ | 3 | 1 | 1 | 3 | 3 | 151 | | |
| 65 | 32 | 02 | 6883 20 0375 | Schwarz Kurt | 13 | | 5 | 13.46.02 | | 1221,774 | 83,76 | 83,06 | | 5/ | 2 | | | 2 | 2 | 77 | | |
| 66 | 33 | 02 | 5007 20 0318 | Allmannsberger/Kainz | 02 | | 3 | 13.44.13 | | 1221,663 | 83,50 | 82,51 | V | 5/ | 5 | 1 | 2 | 5 | 5 | 111 | | |
| 67 | 34 | 02 | 0454 20 0202 | SG Dillinger/Kusser | 14 | | 12 | 13.37.35 | | 1221,161 | 83,25 | 81,97 | | 5/ | 4 | 1 | 2 | 4 | 3 | 76 | | |
| 68 | 34 | 04 | 7040 20 0250 | SG Siglmüller | 26 | | 3 | 13.41.08 | | -1 1221,128 | 82,99 | 84,43 | V | 5/ | 4 | | 1 | 3 | 4 | 70 | | |
| 69 | 35 | 04 | 7075 20 0134 | Simmel Paul.M.u.S. | 26 | | 2 | 13.46.42 | | 1220,781 | 82,74 | 83,96 | | 5/ | 4 | | | 3 | 4 | 94 | | |
| 70 | 36 | 04 | 7075 20 0322 | SG Siglmüller | 26 | | 4 | 13.41.16 | | -1 1220,549 | 82,49 | 83,49 | | 5/ | 3 | | | 3 | 3 | 114 | | |

| FG. PRS | RV. PRS | R V | Ring-Nr. | Züchtername | Ges/Prs. VE. | FG RV | Uhr Ankunft | Uhr Dif | ASPKT M/Min | ASPKT -FG- | ASPKT -RV- | Benannte | Gesamt | | | | | FOL PRS | |
|------------|------------|--------|---------------|----------------------|-----------------|-------|----------------|------------|----------------|---------------|---------------|----------|--------|-----|----|----|----|------------|-----|
| | | | | | | | | | | | | | FL/HH | RE | RG | FG | RV | | |
| 81 | 44 | 04 | 7515 20 1163 | Geier L.+D.+A.+Ella | 09 | 9 | 13.42.01 | | 1217,885 | 79,70 | 79,72 | | 5/3 | 1 | 1 | 3 | 3 | 86 | |
| 82 | 45 | 04 | 7215 20 0677 | Hellauer L. | 08 | 3 | 13.57.18 | -1 | 1217,880 | 79,44 | 79,25 | | 4/2 | | | 2 | 2 | 106 | |
| 83 | 46 | 04 | 5470 20 0577 | SG Weber/Simet | 06 | 3 | 13.39.37 | | 1217,789 | 79,19 | 78,77 | | 5/2 | | | 2 | 2 | 84 | |
| 84 | 47 | 04 | 5140 20 0097 | SG Weber/Simet | 06 | 4 | 13.39.38 | | 1217,716 | 78,93 | 78,30 | | 5/3 | 1 | 1 | 3 | 3 | 119 | |
| 85 | 48 | 04 | 5470 20 0614 | Gubisch F,Chr.,Jonas | 06 | 2 | 13.40.29 | 2 | 1217,451 | 78,68 | 77,83 | | 5/2 | | | 2 | 2 | 103 | |
| 86 | 49 | 04 | 7515 20 1196 | Geier L.+D.+A.+Ella | 09 | 10 | 13.42.16 | | 1216,807 | 78,43 | 77,36 | | 5/2 | | 1 | 2 | 2 | 88 | |
| 87 | 50 | 04 | 6529 20 0650 | Blöchl Gerhard | 07 | 43/4 | 3 13.40.58 | | 1216,151 | 78,17 | 76,89 | | 5/1 | | | 1 | 1 | 235 | |
| 88 | 51 | 04 | 7515 20 1171 | Geier L.+D.+A.+Ella | 09 | 11 | 13.42.27 | | 1216,017 | 77,92 | 76,42 | | 5/4 | 1 | 2 | 4 | 4 | 110 | |
| 89 | 38 | 02 | 4834 20 0543 | Hazoth Hermann | 01 | 3 | 13.56.08 | | 1215,645 | 77,66 | 79,78 | | 5/4 | 1 | 2 | 4 | 3 | 147 | |
| 90 | 39 | 02 | 6883 20 0292 | Krenn M. u. F. | 13 | 3 | 13.44.23 | -1 | 1215,366 | 77,41 | 79,23 | | 5/2 | | 1 | 2 | 2 | 138 | |
| 91 | 52 | 04 | 7569 20 0222 | SG Gründinger | 05 | 11 | 13.44.22 | | 1215,346 | 77,16 | 75,94 | V | CD | 5/5 | 1 | 2 | 5 | 5 | 98 |
| 92 | 53 | 04 | 7074 20 0728 | Schönberger Josef | 15 | 4 | 13.46.39 | | 1215,113 | 76,90 | 75,47 | | 5/2 | | | 2 | 2 | 116 | |
| 93 | 40 | 02 | 0454 20 0031 | SG Büttner | 24 | 10 | 13.41.47 | | 1214,756 | 76,65 | 78,69 | | 5/3 | | | 3 | 2 | 134 | |
| 94 | 54 | 04 | 7075 20 0130 | Simmel Paul.M.u.S. | 26 | 3 | 13.48.10 | | 1214,568 | 76,40 | 75,00 | | 5/3 | 1 | 1 | 3 | 3 | 95 | |
| 95 | 55 | 04 | 7075 20 0116 | Simmel Paul.M.u.S. | 26 | 4 | 13.48.15 | | 1214,217 | 76,14 | 74,53 | | 5/2 | | | 2 | 2 | 178 | |
| 96a | 41a02 | 5496 | 20 0006 | Thoma Jakob | 07 | 38/17 | 19 13.41.38 | | 1214,061 | 75,89 | 78,14 | | 5/3 | | 1 | 3 | 3 | 96 | |
| 96b | 41b02 | 8767 | 20 2238 | Thoma Jakob | 07 | 2 | 13.41.38 | | 1214,061 | 75,89 | 78,14 | | 5/3 | 1 | 1 | 3 | 3 | 99 | |
| 98 | 56 | 04 | 5170 20 0057 | SG Gründinger | 05 | 12 | 13.44.41 | | 1213,994 | 75,38 | 74,06 | | 5/3 | 1 | 1 | 2 | 3 | 101 | |
| 99a | 43a02 | 8767 | 20 2033 | Thoma Jakob | 07 | 3 | 13.41.39 | | 1213,989 | 75,13 | 77,05 | | 5/4 | | 2 | 4 | 4 | 99 | |
| 99b | 43b02 | 8767 | 20 2236 | Thoma Jakob | 07 | 4 | 13.41.39 | | 1213,989 | 75,13 | 77,05 | | 5/4 | | 1 | 4 | 4 | 129 | |
| 101 | 57 | 04 | 7569 20 0264 | SG Gründinger | 05 | 13 | 13.44.46 | | 1213,639 | 74,62 | 73,58 | | 5/4 | | 1 | 4 | 4 | 136 | |
| 102 | 45 | 02 | 0454 20 0234 | SG Dillinger/Kusser | 14 | 14 | 13.39.21 | | 1213,438 | 74,37 | 75,96 | | 5/2 | | | 2 | 2 | 104 | |
| 103 | 58 | 04 | 5470 20 0624 | Gubisch F,Chr.,Jonas | 06 | 3 | 13.41.27 | 2 | 1213,269 | 74,11 | 73,11 | | 5/2 | | | 2 | 2 | 131 | |
| 104 | 46 | 02 | 5138 20 3326 | SG Dillinger/Kusser | 14 | 15 | 13.39.25 | | 1213,149 | 73,86 | 75,41 | | 5/3 | | | 3 | 3 | 107 | |
| 105 | 47 | 02 | 5270 20 0530 | SG Pils/ Tschache | 04 | 2 | 13.52.44 | | 1213,015 | 73,60 | 74,86 | | 5/4 | 1 | 2 | 4 | 4 | 168 | |
| 106 | 59 | 04 | 7215 20 0712 | Hellauer L. | 08 | 4 | 13.58.30 | -1 | 1212,984 | 73,35 | 72,64 | | 4/2 | | | 2 | 2 | 122 | |
| 107 | 48 | 02 | 0454 20 0199 | SG Dillinger/Kusser | 14 | 16 | 13.39.30 | | 1212,787 | 73,10 | 74,32 | | 5/3 | | 1 | 3 | 2 | 109 | |
| 108 | 60 | 04 | 7040 20 0151 | Freund Heinrich | 27 | 7 | 13.45.41 | | 1211,908 | 72,84 | 72,17 | | 5/5 | | 1 | 5 | 5 | 137 | |
| 109 | 49 | 02 | 0454 20 0208 | SG Dillinger/Kusser | 14 | 17 | 13.39.45 | | 1211,703 | 72,59 | 73,77 | | 5/1 | | | 1 | 1 | 112 | |
| 110 | 61 | 04 | NL 20 1094667 | Geier L.+D.+A.+Ella | 09 | 12 | 13.43.28 | | 1211,656 | 72,34 | 71,70 | | 4/2 | 1 | 1 | 2 | 2 | 113 | |
| 111 | 50 | 02 | 5007 20 0285 | Allmannsberger/Kainz | 02 | 4 | 13.46.35 | | 1211,574 | 72,08 | 73,22 | V | | 5/5 | 1 | 2 | 5 | 5 | 132 |
| 112 | 51 | 02 | 0454 20 0211 | SG Dillinger/Kusser | 14 | 18 | 13.39.47 | | 1211,559 | 71,83 | 72,68 | | 5/3 | | 1 | 3 | 3 | 118 | |
| 113 | 62 | 04 | 7515 20 1183 | Geier L.+D.+A.+Ella | 09 | 13 | 13.43.31 | | 1211,442 | 71,57 | 71,23 | | 5/3 | | 1 | 3 | 3 | 124 | |
| 114 | 63 | 04 | 0941 20 0052 | SG Siglmüller | 26 | 5 | 13.43.29 | -1 | 1211,005 | 71,32 | 70,75 | | 5/2 | | | 2 | 2 | 115 | |
| 115 | 64 | 04 | 7075 20 0349 | SG Siglmüller | 26 | 6 | 13.43.30 | -1 | 1210,934 | 71,07 | 70,28 | | 5/3 | | | 1 | 3 | 121 | |
| 116 | 65 | 04 | 7074 20 0725 | Schönberger Josef | 25 | 5 | 13.47.42 | | 1210,678 | 70,81 | 69,81 | | 5/3 | 1 | 1 | 3 | 3 | 117 | |
| 117 | 66 | 04 | 7074 20 0758 | Schönberger Josef | 25 | 6 | 13.47.43 | | 1210,608 | 70,56 | 69,34 | | 5/5 | 1 | 1 | 4 | 5 | 139 | |
| 118 | 52 | 02 | 5138 20 3507 | SG Dillinger/Kusser | 14 | 19 | 13.40.06 | | 1210,189 | 70,30 | 72,13 | | 5/4 | 1 | 2 | 4 | 4 | 128 | |
| 119 | 67 | 04 | 5470 20 0578 | SG Weber/Simet | 06 | 5 | 13.41.23 | | 1210,143 | 70,05 | 68,87 | | 5/2 | | | 2 | 2 | 120 | |
| 120 | 68 | 04 | 5140 20 0076 | SG Weber/Simet | 06 | 6 | 13.41.24 | | 1210,071 | 69,80 | 68,40 | | 5/2 | 1 | 1 | 2 | 2 | 230 | |
| 121 | 69 | 04 | 0941 20 0019 | SG Siglmüller | 26 | 7 | 13.43.59 | -1 | 1208,873 | 69,54 | 67,92 | | 5/3 | 1 | 1 | 3 | 3 | 172 | |
| 122 | 70 | 04 | 7215 20 0656 | Hellauer L. | 08 | 5 | 13.59.32 | -1 | 1208,800 | 69,29 | 67,45 | | 4/4 | 1 | 2 | 4 | 4 | 123 | |
| 123 | 71 | 04 | 7215 20 0667 | Hellauer L. | 08 | 6 | 13.59.33 | -1 | 1208,733 | 69,04 | 66,98 | | 4/1 | | | 1 | 1 | 228 | |
| 124 | 72 | 04 | 7515 20 1204 | Geier L.+D.+A.+Ella | 09 | 14 | 13.44.25 | | 1207,609 | 68,78 | 66,51 | | 5/5 | | 1 | 5 | 5 | 125 | |
| 125 | 73 | 04 | 7515 20 1165 | Geier L.+D.+A.+Ella | 09 | 15 | 13.44.28 | | 1207,396 | 68,53 | 66,04 | V | CD | 5/5 | 1 | 2 | 5 | 5 | 126 |
| 126 | 74 | 04 | 7515 20 1202 | Geier L.+D.+A.+Ella | 09 | 16 | 13.44.29 | | 1207,326 | 68,27 | 65,57 | | 5/5 | 1 | 2 | 5 | 5 | 127 | |
| 127 | 75 | 04 | 7515 20 1180 | Geier L.+D.+A.+Ella | 09 | 17 | 13.44.32 | | 1207,113 | 68,02 | 65,09 | | 5/4 | 1 | 1 | 4 | 4 | 165 | |
| 128 | 53 | 02 | 0454 20 0150 | SG Dillinger/Kusser | 14 | 20 | 13.40.50 | | 1207,029 | 67,77 | 71,58 | | 5/3 | | 1 | 3 | 3 | 130 | |
| 129 | 54 | 02 | 5496 20 0049 | Thoma Jakob | 07 | 5 | 13.43.17 | | 1206,989 | 67,51 | 71,04 | | 5/2 | | | 2 | 2 | 144 | |
| 130 | 55 | 02 | 5138 20 3665 | SG Dillinger/Kusser | 14 | 21 | 13.40.54 | | 1206,743 | 67,26 | 70,49 | | 5/5 | 1 | 2 | 5 | 5 | 133 | |
| 131 | 76 | 04 | 5470 20 0608 | Gubisch F,Chr.,Jonas | 06 | 4 | 13.43.02 | 2 | 1206,481 | 67,01 | 64,62 | V | | 5/4 | 1 | 1 | 3 | 4 | 244 |
| 132 | 56 | 02 | 5007 20 0313 | Allmannsberger/Kainz | 02 | 5 | 13.47.54 | | 1206,033 | 66,75 | 69,95 | | 5/3 | | 1 | 3 | 3 | 223 | |
| 133 | 57 | 02 | 0454 20 0164 | SG Dillinger/Kusser | 14 | 22 | 13.41.04 | | 1206,027 | 66,50 | 69,40 | | 5/2 | | | 2 | 2 | 135 | |
| 134 | 58 | 02 | 0454 20 0044 | SG Büttner | 14 | 11 | 13.43.53 | | 1205,770 | 66,24 | 68,85 | | 5/3 | | 1 | 3 | 2 | 148 | |
| 135 | 59 | 02 | 0454 20 0139 | SG Dillinger/Kusser | 14 | 23 | 13.41.10 | | 1205,598 | 65,99 | 68,31 | | 5/4 | 1 | 2 | 4 | 4 | 150 | |
| 136 | 77 | 04 | 7569 20 0247 | SG Gründinger | 05 | 14 | 13.46.42 | | 1205,455 | 65,74 | 64,15 | | 5/2 | | 1 | 2 | 2 | 152 | |
| 137 | 78 | 04 | 7040 20 0180 | Freund Heinrich | 27 | 8 | 13.47.14 | | 1205,368 | 65,48 | 63,68 | | 5/5 | 1 | 2 | 5 | 5 | 146 | |
| 138 | 60 | 02 | 6883 20 0304 | Krenn M. u. F. | 13 | 4 | 13.46.46 | -1 | 1205,265 | 65,23 | 67,76 | | 5/3 | | | 3 | 2 | 141 | |
| 139 | 79 | 04 | 7074 20 0709 | Schönberger Josef | 25 | 7 | 13.49.01 | | 1205,162 | 64,97 | 63,21 | | 5/3 | 1 | 2 | 3 | 3 | 140 | |
| 140 | 80 | 04 | 7074 20 0718 | Schönberger Josef | 25 | 8 | 13.49.03 | | 1205,023 | 64,72 | 62,74 | | 5/2 | | | 2 | 2 | 142 | |
| 141 | 61 | 02 | 6883 20 0261 | Krenn M. u. F. | 13 | 5 | 13.46.50 | -1 | 1204,985 | 64,47 | 67,21 | | 99 | 5/2 | | | 2 | 2 | 143 |
| 142 | 81 | 04 | 7074 20 0732 | Schönberger Josef | 25 | 9 | 13.49.04 | | 1204,954 | 64,21 | 62,26 | | 5/5 | 1 | 2 | 5 | 5 | 157 | |
| 143 | 62 | 02 | 6883 20 0277 | Krenn M. u. F. | 13 | 6 | 13.46.53 | -1 | 1204,775 | 63,96 | 66,67 | V | | 5/5 | | 2 | 5 | 5 | 208 |
| 144 | 63 | 02 | 5496 20 0036 | Thoma Jakob | 07 | 6 | 13.43.52 | | 1204,509 | 63,71 | 66,12 | | 4/2 | 1 | 1 | 2 | 2 | 145 | |
| 145 | 64 | 02 | 5496 20 0047 | Thoma Jakob | 07 | 7 | 13.43.55 | | 1204,297 | 63,45 | 65,57 | | 5/2 | | 1 | 2 | 1 | 182 | |
| 146 | 82 | 04 | 7040 20 0123 | Freund Heinrich | 27 | 9 | 13.47.32 | | 1204,111 | 63,20 | 61,79 | | 5/3 | 1 | 2 | 3 | 3 | 156 | |
| 147 | 65 | 02 | 4834 20 0522 | Hazoth Hermann | 01 | 4 | 13.59.08 | | 1203,453 | 62,94 | 65,03 | | 5/2 | | 1 | 2 | 2 | 159 | |
| 148 | 66 | 02 | 0454 20 0025 | SG Büttner | 14 | 12 | 13.44.33 | | 1202,945 | 62,69 | 64,48 | | 5/4 | | 1 | 4 | 3 | 163 | |
| 149 | 67 | 02 | 6883 20 0064 | Schwarz Sandro | 13 | 2 | 13.52.38 | | 1202,006 | 62,44 | 63,93 | | 5/4 | | 1 | 4 | 4 | 214 | |
| 150 | 68 | 02 | 0454 20 0251 | SG Dillinger/Kusser | 14 | 24 | 13.42.11 | | 1201,255 | 62,18 | 63,39 | | 5/4 | | 1 | 4 | 3 | 153 | |
| 151 | 83 | 04 | 7215 20 0595 | Schauberger M. | 08 | 4 | 14.00.39 | | 1200,815 | 61,93 | 61,32 | | 5/3 | | | 1 | 3 | 191 | |
| 152 | 84 | 04 | 7569 20 0217 | SG Gründinger | 05 | 15 | 13.47.49 | | 1200,778 | 61,68 | 60,85 | | 5/5 | 1 | 1 | 4 | 5 | 154 | |
| 153 | 69 | 02 | 0454 20 0198 | SG Dillinger/Kusser | 14 | 25 | 13.42.20 | | 1200,616 | 61,42 | 62,84 | | 5/5 | 1 | 2 | 5 | 4 | 158 | |
| 154 | 85 | 04 | 7569 20 0277 | SG Gründinger | 05 | 16 | 13.47.53 | | 1200,500 | 61,17 | 60,38 | | 5/4 | | 1 | 4 | 4 | 155 | |
| 155 | 86 | 04 | 7569 20 0213 | SG Gründinger | 05 | 17 | 13.47.55 | | 1200,361 | 60,91 | 59,91 | | 5/5 | 1 | 2 | 5 | 5 | 161 | |
| 156 | | | | | | | | | | | | | | | | | | | |

| FG. PRS | RV. PRS | R V | Ring-Nr. | Züchtername | VE. | Ges/Prs. | | Uhr Anknunft | Dif | ASPKT | | Benannte | Gesamt | | | | | FOL PRS |
|---------|---------|-----|---------------|----------------------|-----|----------|----------|--------------|-------|-------|------|----------|--------|-------|----|----|----|---------|
| | | | | | | FG | RV | | | M/Min | -FG- | | -RV- | FL/HH | RE | RG | FG | |
| 161 | 90 | 04 | 7569 20 0269 | SG Gründinger | 05 | 18 | 13.48.17 | 1198,834 | 59,39 | 58,02 | V | D | 5/5 | 1 | 2 | 5 | 5 | 162 |
| 162 | 91 | 04 | 5170 20 0055 | SG Gründinger | 05 | 19 | 13.48.19 | 1198,696 | 59,14 | 57,55 | | | 5/3 | | | 3 | 3 | 200 |
| 163 | 72 | 02 | 0454 20 0014 | SG Büttner | 14 | 13 | 13.45.35 | 1198,592 | 58,88 | 61,20 | | | 5/4 | 1 | 4 | 1 | 4 | 179 |
| 164 | 73 | 02 | 5138 20 3800 | SG Dillinger/Kusser | 14 | 27 | 13.42.59 | 1197,859 | 58,63 | 60,66 | | | 5/2 | | 1 | 2 | 2 | 169 |
| 165 | 92 | 04 | 6529 20 0511 | Geier L.+D.+A.+Ella | 09 | 18 | 13.46.46 | 1197,712 | 58,38 | 57,08 | V | CD | 5/5 | 1 | 2 | 5 | 5 | 174 |
| 166 | 74 | 02 | 6883 20 0315 | Schwarz Kurt | 13 | 7 | 13.51.48 | 1197,629 | 58,12 | 60,11 | | | 5/2 | | 2 | 2 | 2 | 175 |
| 167 | 93 | 04 | 7074 20 0708 | Schönberger Josef | 25 | 11 | 13.50.51 | 1197,566 | 57,87 | 56,60 | | | 5/5 | | 1 | 5 | 5 | 195 |
| 168 | 75 | 02 | 5270 20 0515 | SG Pilsl / Tschache | 04 | 3 | 13.56.37 | 1197,134 | 57,61 | 59,56 | | | 5/3 | | | 3 | 2 | 197 |
| 169 | 76 | 02 | 5138 20 3494 | SG Dillinger/Kusser | 14 | 28 | 13.43.10 | 1197,083 | 57,36 | 59,02 | | | 5/3 | | 1 | 3 | 3 | 173 |
| 170 | 77 | 02 | 4834 20 0623 | Hazoth Hermann | 01 | 6 | 14.00.44 | 1197,051 | 57,11 | 58,47 | | | 5/4 | | 1 | 4 | 3 | 171 |
| 171 | 78 | 02 | 4834 20 0625 | Hazoth Hermann | 01 | 7 | 14.00.50 | 1196,653 | 56,85 | 57,92 | | | 5/2 | 1 | 1 | 2 | 2 | 186 |
| 172 | 94 | 04 | 7075 20 0356 | SG Siglmüller | 26 | 8 | 13.46.57 | -1 1196,376 | 56,60 | 56,13 | | | 5/2 | | | 1 | 2 | 185 |
| 173 | 79 | 02 | 0454 20 0138 | SG Dillinger/Kusser | 14 | 29 | 13.43.22 | 1196,238 | 56,35 | 57,38 | | | 5/5 | 1 | 1 | 5 | 4 | 190 |
| 174 | 95 | 04 | 7515 20 1161 | Geier L.+D.+A.+Ella | 09 | 19 | 13.47.08 | 1196,183 | 56,09 | 55,66 | | | 5/4 | | 1 | 4 | 4 | 183 |
| 175 | 80 | 02 | 6883 20 0361 | Schwarz Kurt | 13 | 8 | 13.52.15 | 1195,784 | 55,84 | 56,83 | | | 5/3 | | | 3 | 3 | 176 |
| 176 | 81 | 02 | 6883 20 0398 | Schwarz Kurt | 13 | 9 | 13.52.17 | 1195,648 | 55,58 | 56,28 | V | | 5/4 | | 1 | 4 | 4 | 177 |
| 177 | 82 | 02 | 6883 20 0372 | Schwarz Kurt | 13 | 10 | 13.52.18 | 1195,580 | 55,33 | 55,74 | | | 5/2 | | | 2 | 2 | 198 |
| 178 | 96 | 04 | 7075 20 0104 | Simmel Paul.M.u.S. | 26 | 5 | 13.53.01 | 1194,464 | 55,08 | 55,19 | | | 5/2 | 1 | 1 | 2 | 2 | 181 |
| 179 | 83 | 02 | 0454 20 0016 | SG Büttner | 14 | 14 | 13.46.41 | 1193,993 | 54,82 | 55,19 | | | 5/3 | | | 3 | 2 | 180 |
| 180 | 84 | 02 | 5496 20 0140 | SG Büttner | 14 | 15 | 13.46.42 | 1193,924 | 54,57 | 54,64 | | | 5/4 | | 1 | 4 | 4 | 192 |
| 181 | 97 | 04 | 7075 20 0112 | Simmel Paul.M.u.S. | 26 | 6 | 13.53.09 | 1193,921 | 54,31 | 54,72 | | | 5/2 | 1 | 1 | 2 | 2 | 252 |
| 182 | 85 | 02 | 5496 20 0051 | Thoma Jakob | 07 | 8 | 13.46.38 | 1192,883 | 54,06 | 54,10 | | | 5/3 | 1 | 1 | 3 | 2 | 225 |
| 183 | 98 | 04 | 7515 20 1188 | Geier L.+D.+A.+Ella | 09 | 20 | 13.47.56 | 1192,859 | 53,81 | 54,25 | V | | 5/5 | 1 | 2 | 5 | 5 | 187 |
| 184 | 99 | 04 | 7040 20 0172 | Freund Heinrich | 27 | 12 | 13.50.16 | 1192,772 | 53,55 | 53,77 | | | 5/2 | | | 2 | 2 | 194 |
| 185 | 100 | 04 | 7075 20 0333 | SG Siglmüller | 26 | 9 | 13.47.52 | -1 1192,566 | 53,30 | 53,30 | | | 5/1 | | | 1 | 1 | 238 |
| 186 | 86 | 02 | 4021 20 0964 | Hazoth Hermann | 01 | 8 | 14.01.52 | 1192,556 | 53,05 | 53,55 | | | 5/4 | 1 | 2 | 4 | 4 | 220 |
| 187 | 101 | 04 | NL 20 1094671 | Geier L.+D.+A.+Ella | 09 | 21 | 13.48.01 | 1192,514 | 52,79 | 52,83 | | | 5/4 | | 1 | 4 | 4 | 207 |
| 188 | 102 | 04 | 7040 20 0205 | SG Kern&Liebl Sandra | 27 | 3 | 13.51.55 | 1192,484 | 52,54 | 52,36 | V | | 5/4 | 1 | 2 | 4 | 4 | 189 |
| 189 | 103 | 04 | 7040 20 0249 | SG Kern&Liebl Sandra | 27 | 4 | 13.51.56 | 1192,416 | 52,28 | 51,89 | V | | 5/4 | 1 | 2 | 4 | 4 | 291 |
| 190 | 87 | 02 | 5138 20 3630 | SG Dillinger/Kusser | 14 | 30 | 13.44.19 | 1192,241 | 52,03 | 53,01 | | | 5/5 | | 1 | 5 | 4 | 203 |
| 191 | 104 | 04 | 7215 20 0607 | Schauberger M. | 08 | 5 | 14.02.54 | 1191,895 | 51,78 | 51,42 | | | 5/3 | | | 2 | 3 | 193 |
| 192 | 88 | 02 | 0454 20 0008 | SG Büttner | 14 | 16 | 13.47.13 | 1191,776 | 51,52 | 52,46 | V | | 5/4 | 1 | 1 | 4 | 4 | 213 |
| 193 | 105 | 04 | 7215 20 0584 | Schauberger M. | 08 | 6 | 14.02.56 | 1191,764 | 51,27 | 50,94 | | | 5/3 | | | 3 | 3 | 196 |
| 194 | 106 | 04 | 7040 20 0153 | Freund Heinrich | 27 | 13 | 13.50.36 | 1191,404 | 51,02 | 50,47 | | | 5/3 | | | 2 | 3 | 202 |
| 195 | 107 | 04 | 7074 20 0743 | Schönberger Josef | 25 | 12 | 13.52.22 | 1191,353 | 50,76 | 50,00 | | | 5/2 | | | 1 | 2 | 199 |
| 196 | 108 | 04 | 7215 20 0611 | Schauberger M. | 08 | 7 | 14.03.05 | 1191,174 | 50,51 | 49,53 | | | 5/3 | 1 | 2 | 3 | 3 | 210 |
| 197 | 89 | 02 | 5270 20 0514 | SG Pilsl / Tschache | 04 | 4 | 13.58.19 | 1190,312 | 50,25 | 51,91 | | | 5/3 | | 1 | 3 | 2 | 243 |
| 198 | 90 | 02 | 6883 20 0385 | Schwarz Kurt | 13 | 11 | 13.53.46 | 1189,611 | 50,00 | 51,37 | | | 5/3 | | 1 | 3 | 3 | 233 |
| 199 | 109 | 04 | 7074 20 0715 | Schönberger Josef | 25 | 13 | 13.52.52 | 1189,319 | 49,75 | 49,06 | | | 5/2 | | | 2 | 2 | 216 |
| 200 | 110 | 04 | 7569 20 0216 | SG Gründinger | 05 | 20 | 13.50.37 | 1189,209 | 49,49 | 48,58 | | | 5/4 | 1 | 1 | 4 | 4 | 201 |
| 201 | 111 | 04 | 7569 20 0202 | SG Gründinger | 05 | 21 | 13.50.41 | 1188,936 | 49,24 | 48,11 | | | 5/3 | | 1 | 3 | 3 | 206 |
| 202 | 112 | 04 | 7040 20 0128 | Freund Heinrich | 27 | 14 | 13.51.14 | 1188,813 | 48,98 | 47,64 | | | 5/4 | 1 | 1 | 3 | 4 | 204 |
| 203 | 91 | 02 | 0454 20 0186 | SG Dillinger/Kusser | 14 | 31 | 13.45.09 | 1188,757 | 48,73 | 50,82 | | | 5/4 | 1 | 1 | 4 | 4 | 205 |
| 204 | 113 | 04 | 7040 20 0111 | Freund Heinrich | 27 | 15 | 13.51.15 | 1188,745 | 48,48 | 47,17 | | | 5/3 | | | 1 | 3 | 217 |
| 205 | 92 | 02 | 0454 20 0162 | SG Dillinger/Kusser | 14 | 32 | 13.45.12 | 1188,548 | 48,22 | 50,27 | | | 5/3 | | 1 | 3 | 3 | 226 |
| 206 | 114 | 04 | 7569 20 0206 | SG Gründinger | 05 | 22 | 13.50.47 | 1188,528 | 47,97 | 46,70 | V | | 5/5 | 1 | 2 | 5 | 5 | 218 |
| 207 | 115 | 04 | 7515 20 1189 | Geier L.+D.+A.+Ella | 09 | 22 | 13.49.00 | 1188,457 | 47,72 | 46,23 | | | 5/5 | | 1 | 5 | 5 | 209 |
| 208 | 93 | 02 | 6883 20 0270 | Krenn M. u. F. | 13 | 7 | 13.51.04 | -1 1187,461 | 47,46 | 49,73 | V | | 5/4 | | 1 | 4 | 3 | 222 |
| 209 | 116 | 04 | 7515 20 1168 | Geier L.+D.+A.+Ella | 09 | 23 | 13.49.15 | 1187,430 | 47,21 | 45,75 | | | 5/4 | 1 | 2 | 4 | 4 | 211 |
| 210 | 117 | 04 | 7215 20 0563 | Schauberger M. | 08 | 8 | 14.04.05 | 1187,257 | 46,95 | 45,28 | | | 5/1 | | | 1 | 1 | 236 |
| 211 | 118 | 04 | 2238 20 0245 | Geier L.+D.+A.+Ella | 09 | 24 | 13.49.19 | 1187,156 | 46,70 | 44,81 | | | 5/5 | 1 | 2 | 5 | 5 | 212 |
| 212 | 119 | 04 | 7515 20 1173 | Geier L.+D.+A.+Ella | 09 | 25 | 13.49.25 | 1186,746 | 46,45 | 44,34 | | | 5/3 | 1 | 2 | 3 | 3 | 240 |
| 213 | 94 | 02 | 0454 20 0027 | SG Büttner | 14 | 17 | 13.48.33 | 1186,269 | 46,19 | 49,18 | | | 5/1 | | | 1 | 1 | 215 |
| 214 | 95 | 02 | 6883 20 0074 | Schwarz Sandro | 13 | 3 | 13.56.31 | 1186,264 | 45,94 | 48,63 | | | 5/3 | 1 | 2 | 3 | 3 | 323 |
| 215 | 96 | 02 | 0454 20 0041 | SG Büttner | 14 | 18 | 13.48.37 | 1185,995 | 45,69 | 48,09 | | | 5/1 | | | 1 | 1 | 254 |
| 216 | 120 | 04 | 7074 20 0746 | Schönberger Josef | 25 | 14 | 13.53.42 | 1185,945 | 45,43 | 43,87 | | | 5/2 | | | 1 | 2 | 242 |
| 217 | 121 | 04 | 7040 20 0107 | Freund Heinrich | 27 | 16 | 13.51.57 | 1185,895 | 45,18 | 43,40 | | | 5/3 | | | 2 | 3 | 219 |
| 218 | 122 | 04 | 7569 20 0256 | SG Gründinger | 05 | 23 | 13.51.26 | 1185,877 | 44,92 | 42,92 | | | 5/3 | | | 3 | 3 | 234 |
| 219 | 123 | 04 | 7040 20 0116 | Freund Heinrich | 27 | 17 | 13.52.00 | 1185,692 | 44,67 | 42,45 | | | 5/2 | | | 1 | 2 | 221 |
| 220 | 97 | 02 | 5206 20 1361 | Hazoth Hermann | 01 | 9 | 14.03.43 | 1185,292 | 44,42 | 47,54 | | | 5/3 | | 1 | 3 | 2 | 302 |
| 221 | 124 | 04 | 7040 20 0178 | Freund Heinrich | 27 | 18 | 13.52.08 | 1185,151 | 44,16 | 41,98 | | | 5/2 | | | 2 | 2 | 224 |
| 222 | 98 | 02 | 6883 20 0273 | Krenn M. u. F. | 13 | 8 | 13.51.42 | -1 1184,883 | 43,91 | 46,99 | | | 5/3 | | 1 | 3 | 3 | 227 |
| 223 | 99 | 02 | 5007 20 0301 | Allmannsberger/Kainz | 02 | 6 | 13.53.08 | 1184,502 | 43,65 | 46,45 | | | 5/3 | | | 3 | 1 | 237 |
| 224 | 125 | 04 | 7040 20 0121 | Freund Heinrich | 27 | 19 | 13.52.19 | 1184,407 | 43,40 | 41,51 | | | 5/4 | 1 | 2 | 4 | 4 | 246 |
| 225 | 100 | 02 | 8767 20 2059 | Thoma Jakob | 07 | 9 | 13.48.43 | 1184,275 | 43,15 | 45,90 | | | 5/4 | 1 | 2 | 4 | 4 | 271 |
| 226 | 101 | 02 | 0454 20 0204 | SG Dillinger/Kusser | 14 | 33 | 13.46.17 | 1184,051 | 42,89 | 45,36 | | | 5/5 | 1 | 2 | 5 | 5 | 239 |
| 227 | 102 | 02 | 6883 20 0310 | Krenn M. u. F. | 13 | 9 | 13.52.05 | -1 1183,328 | 42,64 | 44,81 | | | 5/4 | | 1 | 4 | 3 | 247 |
| 228 | 126 | 04 | 7215 20 0675 | Hellauer L. | 08 | 7 | 14.06.01 | -1 1183,191 | 42,39 | 41,04 | | | 4/3 | 1 | 1 | 3 | 3 | 229 |
| 229 | 127 | 04 | 7215 20 0702 | Hellauer L. | 08 | 8 | 14.06.03 | -1 1183,063 | 42,13 | 40,57 | | | 4/2 | | | 2 | 2 | 255 |
| 230 | 128 | 04 | 5140 20 0094 | SG Weber/Simet | 06 | 7 | 13.47.55 | 1182,682 | 41,88 | 40,09 | | | 5/2 | 1 | 1 | 2 | 2 | 231 |
| 231 | 129 | 04 | 5140 20 0075 | SG Weber/Simet | 06 | 8 | 13.47.58 | 1182,477 | 41,62 | 39,62 | | | 5/2 | | | 2 | 2 | 232 |
| 232 | 130 | 04 | 5569 20 1112 | SG Weber/Simet | 06 | 9 | 13.47.59 | 1182,409 | 41,37 | 39,15 | | | 5/2 | | | 2 | 2 | 258 |
| 233 | 103 | 02 | 6883 20 0383 | Schwarz Kurt | 13 | 12 | 13.55.34 | 1182,366 | 41,12 | 44,26 | | | 5/4 | | 1 | 4 | 3 | 261 |
| 234 | 131 | 04 | 7569 20 0272 | SG Gründinger | 05 | 24 | 13.52.29 | 1181,619 | 40,86 | 38,68 | | | 5/5 | 1 | 2 | 5 | 5 | 297 |
| 235 | 132 | 04 | 6529 20 0662 | Blöchl Gerhard | 07 | 2 | 13.49.11 | 1181,596 | 40,61 | 38,21 | | | 5/3 | | | 3 | 3 | 343 |
| 236 | 133 | 04 | 7215 20 0599 | Schauberger M. | 08 | 9 | 14.05.35 | 1181,429 | 40,36 | 37,74 | | | 5/2 | 1 | 1 | 2 | 2 | |

| FG. PRS | RV. PRS | R V | Ring-Nr. | Züchtername | VE. | Ges/Prs. | | Uhr Ankunft | Uhr Dif | M/Min | ASPKT | | Benannte | Gesamt | | | | | FOL PRS | |
|------------|------------|---------|----------|----------------------|-----|----------|------------|----------------|------------|----------|-------|-------|----------|--------|----|----|----|----|------------|-----|
| | | | | | | FG | RV | | | | -FG- | -RV- | | FL/HH | RE | RG | FG | RV | | |
| 240b | 135b04 | NL 20 | 1094679 | Geier L.+D.+A.+Ella | 09 | 27 | 13.50.53 | | | 1180,762 | 39,34 | 36,79 | | 5/3 | 1 | 1 | 3 | 3 | 249 | |
| 242 | 137 04 | 7074 20 | 0754 | Schönberger Josef | 25 | 15 | 13.55.00 | | | 1180,719 | 38,83 | 35,85 | | 5/4 | 1 | 1 | 3 | 4 | 245 | |
| 243 | 106 02 | 5270 20 | 0520 | SG Pils / Tschache | 04 | 5 | 14.00.46 | | | 1180,616 | 38,58 | 42,62 | | 5/4 | 1 | 1 | 4 | 2 | 267 | |
| 244 | 138 04 | 5470 20 | 0606 | Gubisch F,Chr.,Jonas | 06 | 5 | 13.49.14 | | 2 | 1180,615 | 38,32 | 35,38 | V | 5/2 | | 1 | 2 | 2 | 266 | |
| 245 | 139 04 | 7074 20 | 0717 | Schönberger Josef | 25 | 16 | 13.55.02 | | | 1180,585 | 38,07 | 34,91 | | 5/2 | | | 2 | 2 | 283 | |
| 246 | 140 04 | 7040 20 | 0132 | Freund Heinrich | 27 | 20 | 13.53.16 | | | 1180,571 | 37,82 | 34,43 | | 5/4 | | 2 | 4 | 4 | 274 | |
| 247 | 107 02 | 6883 20 | 0316 | Krenn M. u. F. | 13 | 10 | 13.52.46 | | -1 | 1180,566 | 37,56 | 42,08 | | 5/3 | | | 3 | 2 | 282 | |
| 248 | 141 04 | 7215 20 | 0616 | Schaubberger M. | 08 | 10 | 14.05.49 | | | 1180,528 | 37,31 | 33,96 | | 5/5 | 1 | 2 | 5 | 5 | 250 | |
| 249 | 142 04 | 7515 20 | 1182 | Geier L.+D.+A.+Ella | 09 | 28 | 13.50.57 | | | 1180,491 | 37,06 | 33,49 | | 5/3 | | | 3 | 3 | 251 | |
| 250 | 143 04 | 7215 20 | 0579 | Schaubberger M. | 08 | 11 | 14.05.50 | | | 1180,463 | 36,80 | 33,02 | | 5/4 | | 1 | 4 | 4 | 264 | |
| 251 | 144 04 | 7515 20 | 1214 | Geier L.+D.+A.+Ella | 09 | 29 | 13.51.00 | | | 1180,289 | 36,55 | 32,55 | | 5/2 | | | 2 | 2 | 253 | |
| 252 | 145 04 | 7075 20 | 0109 | Simmel Paul.M.u.S. | 26 | 7 | 13.56.33 | | | 1180,233 | 36,29 | 32,08 | | 5/2 | | | 1 | 2 | 304 | |
| 253 | 146 04 | 7515 20 | 1212 | Geier L.+D.+A.+Ella | 09 | 30 | 13.51.01 | | | 1180,221 | 36,04 | 31,60 | | 5/2 | 1 | 1 | 2 | 2 | 256 | |
| 254 | 108 02 | 0454 20 | 0003 | SG Büttner | 14 | 19 | 13.50.06 | | | 1179,931 | 35,79 | 41,53 | | 5/3 | 1 | 1 | 3 | 3 | 315 | |
| 255 | 147 04 | 7215 20 | 0668 | Hellauer L. | 08 | 9 | 14.06.55 | | -1 | 1179,722 | 35,53 | 31,13 | | 4/3 | 1 | 1 | 3 | 3 | 259 | |
| 256 | 148 04 | 7515 20 | 1221 | Geier L.+D.+A.+Ella | 09 | 31 | 13.51.14 | | | 1179,343 | 35,28 | 30,66 | | 5/5 | 1 | 2 | 5 | 5 | 273 | |
| 257 | 109 02 | 6616 20 | 0223 | Rametsteiner H.&E. | 09 | 45/3 | 4 14.12.02 | | | 1179,249 | 35,03 | 40,98 | V | 5/1 | | | 1 | 1 | 272 | |
| 258 | 149 04 | 5470 20 | 0544 | SG Weber/Simet | 06 | 10 | 13.48.47 | | | 1179,133 | 34,77 | 30,19 | V | 5/3 | 1 | 1 | 2 | 3 | 260 | |
| 259 | 150 04 | 7215 20 | 0711 | Hellauer L. | 08 | 10 | 14.07.05 | | -1 | 1179,082 | 34,52 | 29,72 | | 4/3 | 1 | 1 | 3 | 3 | 309 | |
| 260 | 151 04 | 5470 20 | 0570 | SG Weber/Simet | 06 | 11 | 13.48.48 | | | 1179,065 | 34,26 | 29,25 | V | 5/4 | 1 | 1 | 3 | 4 | 262 | |
| 261 | 110 02 | 6883 20 | 0400 | Schwarz Kurt | 13 | 13 | 13.56.39 | | | 1178,048 | 34,01 | 40,44 | | 5/1 | | | 1 | 1 | 263 | |
| 262 | 152 04 | 5470 20 | 0567 | SG Weber/Simet | 06 | 12 | 13.49.04 | | | 1177,977 | 33,76 | 28,77 | V | 5/3 | 1 | 2 | 3 | 3 | 278 | |
| 263 | 111 02 | 6883 20 | 0374 | Schwarz Kurt | 13 | 14 | 13.56.51 | | | 1177,255 | 33,50 | 39,89 | | 5/3 | | | 1 | 3 | 338 | |
| 264 | 153 04 | 7215 20 | 0625 | Schaubberger M. | 08 | 12 | 14.06.43 | | | 1177,064 | 33,25 | 28,30 | | 5/3 | 1 | 1 | 3 | 3 | 375 | |
| 265 | 112 02 | 0454 20 | 0181 | SG Dillinger/Kusser | 14 | 35 | 13.48.08 | | | 1176,448 | 32,99 | 39,34 | | 5/4 | 1 | 2 | 4 | 4 | 268 | |
| 266 | 154 04 | 5470 20 | 0667 | Gubisch F,Chr.,Jonas | 06 | 6 | 13.50.16 | | 2 | 1176,412 | 32,74 | 27,83 | | 5/4 | 1 | 2 | 4 | 4 | 330 | |
| 267 | 113 02 | 5270 20 | 0557 | SG Pils / Tschache | 04 | 6 | 14.01.51 | | | 1176,379 | 32,49 | 38,80 | | 5/3 | | | 1 | 3 | 294 | |
| 268 | 114 02 | 5138 20 | 3360 | SG Dillinger/Kusser | 14 | 36 | 13.48.12 | | | 1176,176 | 32,23 | 38,25 | | 5/4 | 1 | 1 | 4 | 4 | 314 | |
| 269 | 155 04 | 7075 20 | 0335 | SG Siglmüller | 26 | 11 | 13.52.03 | | -1 | 1175,485 | 31,98 | 27,36 | | 5/3 | | | 3 | 3 | 270 | |
| 270 | 156 04 | 7075 20 | 0358 | SG Siglmüller | 26 | 12 | 13.52.05 | | -1 | 1175,351 | 31,73 | 26,89 | | 5/1 | | | 1 | 1 | 277 | |
| 271 | 115 02 | 5496 20 | 0052 | Thoma Jakob | 07 | 10 | 13.50.55 | | | 1175,319 | 31,47 | 37,70 | | 5/3 | | 1 | 3 | 2 | 306 | |
| 272 | 116 02 | 6883 20 | 0232 | Rametsteiner H.&E. | 09 | 2 | 14.13.05 | | | 1175,294 | 31,22 | 37,16 | | 5/1 | | | 1 | 1 | 329 | |
| 273 | 157 04 | NL 20 | 1094668 | Geier L.+D.+A.+Ella | 09 | 32 | 13.52.16 | | | 1175,173 | 30,96 | 26,42 | | 5/4 | 1 | 1 | 4 | 4 | 318 | |
| 274a | 158a04 | 7040 20 | 0139 | Freund Heinrich | 27 | 21 | 13.54.40 | | | 1174,962 | 30,71 | 25,94 | | 5/3 | | | 1 | 3 | 274 | |
| 274b | 158b04 | 7040 20 | 0149 | Freund Heinrich | 27 | 22 | 13.54.40 | | | 1174,962 | 30,71 | 25,94 | | 5/3 | | | 1 | 3 | 276 | |
| 276 | 160 04 | 5873 20 | 0327 | Freund Heinrich | 27 | 23 | 13.54.44 | | | 1174,696 | 30,20 | 25,00 | | 5/3 | 1 | 1 | 3 | 3 | 285 | |
| 277 | 161 04 | 7075 20 | 0310 | SG Siglmüller | 26 | 13 | 13.52.16 | | -1 | 1174,614 | 29,95 | 24,53 | V | 5/5 | | | 1 | 4 | 5 | 279 |
| 278 | 162 04 | 5470 20 | 0593 | SG Weber/Simet | 06 | 13 | 13.49.55 | | | 1174,524 | 29,70 | 24,06 | | 5/3 | 1 | 1 | 3 | 3 | 280 | |
| 279 | 163 04 | 7040 20 | 0256 | SG Siglmüller | 26 | 14 | 13.52.18 | | -1 | 1174,480 | 29,44 | 23,58 | | 5/2 | | | 2 | 2 | 290 | |
| 280 | 164 04 | 5140 20 | 0096 | SG Weber/Simet | 06 | 14 | 13.49.57 | | | 1174,389 | 29,19 | 23,11 | | 5/3 | | 1 | 3 | 3 | 281 | |
| 281 | 165 04 | 5569 20 | 1192 | SG Weber/Simet | 06 | 15 | 13.50.00 | | | 1174,186 | 28,93 | 22,64 | | 5/3 | | 1 | 2 | 3 | 305 | |
| 282 | 117 02 | 6883 20 | 0309 | Krenn M. u. F. | 13 | 11 | 13.54.27 | | -1 | 1173,817 | 28,68 | 36,61 | | 5/3 | | | 3 | 2 | 331 | |
| 283 | 166 04 | 7074 20 | 0713 | Schönberger Josef | 25 | 17 | 13.56.47 | | | 1173,624 | 28,43 | 22,17 | | 5/3 | | 1 | 3 | 3 | 287 | |
| 284 | 118 02 | 5007 20 | 0331 | Allmannsberger/Kainz | 02 | 8 | 13.55.52 | | | 1173,559 | 28,17 | 36,07 | | 5/3 | | | 3 | 2 | 286 | |
| 285 | 167 04 | 7040 20 | 0109 | Freund Heinrich | 27 | 24 | 13.55.04 | | | 1173,369 | 27,92 | 21,70 | | 5/2 | | | 2 | 2 | 298 | |
| 286 | 119 02 | 7216 20 | 0985 | Allmannsberger/Kainz | 02 | 9 | 13.55.56 | | | 1173,295 | 27,66 | 35,52 | | 5/4 | | 1 | 4 | 4 | 287 | |
| 287 | 168 04 | 7074 20 | 0753 | Schönberger Josef | 25 | 18 | 13.56.53 | | | 1173,229 | 27,41 | 21,23 | | 5/3 | | | 2 | 3 | 289 | |
| 287 | 120 02 | 5007 20 | 0316 | Allmannsberger/Kainz | 02 | 10 | 13.55.57 | | | 1173,229 | 27,41 | 34,97 | | 5/3 | | | 3 | 3 | 299 | |
| 289 | 169 04 | 7074 20 | 0740 | Schönberger Josef | 25 | 19 | 13.56.55 | | | 1173,097 | 26,90 | 20,75 | | 5/3 | | | 2 | 3 | 319 | |
| 290 | 170 04 | 7075 20 | 0365 | SG Siglmüller | 26 | 15 | 13.52.39 | | -1 | 1173,075 | 26,65 | 20,28 | | 5/2 | | 1 | 2 | 2 | 291 | |
| 291 | 171 04 | 7040 20 | 0232 | SG Kern&Liebl Sandra | 27 | 5 | 13.57.00 | | | 1172,074 | 26,40 | 19,81 | | 5/1 | | | 1 | 1 | 293 | |
| 291 | 171 04 | 7075 20 | 0345 | SG Siglmüller | 26 | 16 | 13.52.54 | | -1 | 1172,074 | 26,40 | 19,81 | | 5/1 | | | 1 | 1 | 295 | |
| 293 | 173 04 | 7040 20 | 0223 | SG Kern&Liebl Sandra | 27 | 6 | 13.57.03 | | | 1171,877 | 25,89 | 18,87 | V | 5/5 | 1 | 2 | 5 | 5 | 321 | |
| 294 | 121 02 | 5270 20 | 0519 | SG Pils / Tschache | 04 | 7 | 14.03.04 | | | 1171,656 | 25,63 | 34,43 | | 5/2 | | | 2 | 2 | 352 | |
| 295 | 174 04 | 7075 20 | 0323 | SG Siglmüller | 26 | 17 | 13.53.01 | | -1 | 1171,607 | 25,38 | 18,40 | | 5/1 | | | 1 | 1 | 296 | |
| 296 | 175 04 | 7075 20 | 0318 | SG Siglmüller | 26 | 18 | 13.53.03 | | -1 | 1171,474 | 25,13 | 17,92 | | 5/3 | | | 3 | 3 | 308 | |
| 297 | 176 04 | 5170 20 | 0058 | SG Gründinger | 05 | 25 | 13.55.06 | | | 1171,142 | 24,87 | 17,45 | | 5/3 | 1 | 1 | 2 | 3 | 340 | |
| 298 | 177 04 | 7040 20 | 0118 | Freund Heinrich | 27 | 25 | 13.55.42 | | | 1170,856 | 24,62 | 16,98 | | 5/4 | | | 1 | 4 | 4 | 301 |
| 299 | 122 02 | 5007 20 | 0337 | Allmannsberger/Kainz | 02 | 11 | 13.56.36 | | | 1170,657 | 24,37 | 33,88 | | 5/3 | | 1 | 3 | 3 | 300 | |
| 300 | 123 02 | 8389 20 | 4400 | Allmannsberger/Kainz | 02 | 12 | 13.56.38 | | | 1170,526 | 24,11 | 33,33 | | 5/3 | | | 3 | 1 | 351 | |
| 301 | 178 04 | 7040 20 | 0137 | Freund Heinrich | 27 | 26 | 13.55.50 | | | 1170,328 | 23,86 | 16,51 | | 5/3 | | 1 | 2 | 3 | 317 | |
| 302 | 124 02 | 4834 20 | 0526 | Hazoth Hermann | 01 | 10 | 14.07.39 | | | 1170,138 | 23,60 | 32,79 | | 5/2 | | | 1 | 2 | 2 | 303 |
| 303 | 125 02 | 4834 20 | 0565 | Hazoth Hermann | 01 | 11 | 14.07.41 | | | 1170,011 | 23,35 | 32,24 | V | 5/2 | 1 | 1 | 2 | 2 | 307 | |
| 304 | 179 04 | 7075 20 | 0132 | Simmel Paul.M.u.S. | 26 | 8 | 13.59.20 | | | 1169,258 | 23,10 | 16,04 | | 5/3 | 1 | 1 | 3 | 3 | 310 | |
| 305 | 180 04 | 5470 20 | 0563 | SG Weber/Simet | 06 | 16 | 13.51.27 | | | 1168,344 | 22,84 | 15,57 | | 5/1 | | | 1 | 1 | 384 | |
| 306 | 126 02 | 5496 20 | 0061 | Thoma Jakob | 07 | 11 | 13.52.44 | | | 1168,026 | 22,59 | 31,69 | | 5/4 | 1 | 2 | 4 | 4 | 311 | |
| 307 | 127 02 | 4834 20 | 0531 | Hazoth Hermann | 01 | 12 | 14.08.14 | | | 1167,924 | 22,34 | 31,15 | | 5/3 | | | 3 | 2 | 383 | |
| 308 | 181 04 | 7075 20 | 0312 | SG Siglmüller | 26 | 19 | 13.54.00 | | -1 | 1167,689 | 22,08 | 15,09 | | 5/3 | | | 2 | 3 | 312 | |
| 309 | 182 04 | 7215 20 | 0647 | Hellauer L. | 08 | 11 | 14.10.08 | | -1 | 1167,487 | 21,83 | 14,62 | | 4/4 | 1 | 2 | 4 | 4 | 316 | |
| 310 | 183 04 | 7075 20 | 0118 | Simmel Paul.M.u.S. | 26 | 9 | 13.59.48 | | | 1167,438 | 21,57 | 14,15 | | 5/1 | | | 1 | 1 | 341 | |
| 311 | 128 02 | 5496 20 | 0003 | Thoma Jakob | 07 | 12 | 13.52.58 | | | 1167,095 | 21,32 | 30,60 | | 5/5 | 1 | 2 | 5 | 4 | 313 | |
| 312 | 184 04 | 7075 20 | 0360 | SG Siglmüller | 26 | 20 | 13.54.09 | | -1 | 1167,093 | 21,07 | 13,68 | | 5/1 | | | 1 | 1 | 337 | |
| 313 | 129 02 | 8767 20 | 2235 | Thoma Jakob | 07 | 13 | 13.52.59 | | | 1167,029 | 20,81 | 30,05 | | 5/3 | | | | | | |

| FG. PRS | RV. PRS | R V | Ring-Nr. | Züchtername | VE. | Ges/Prs. | | Uhr Dif | ASPKT | | Benannte | Gesamt | | | | | FOL PRS | | |
|---------|---------|---------|----------|---------------------|----------------------|----------|----------|------------|------------|-------|----------|--------|------|-------|----|----|---------|-----|-----|
| | | | | | | FG | RV | | Ankunft | M/Min | | -FG- | -RV- | FL/HH | RE | RG | | FG | RV |
| 321 | 190 | 04 | 7040 20 | 0230 | SG Kern&Liebl Sandra | 27 | 7 | 13.58.51 | 1164,818 | 18,78 | 10,85 | V | 5/4 | 1 | 2 | 4 | 4 | 322 | |
| 322 | 191 | 04 | 7040 20 | 0214 | SG Kern&Liebl Sandra | 27 | 8 | 13.58.55 | 1164,559 | 18,53 | 10,38 | | 5/2 | | | 2 | 2 | 386 | |
| 323 | 132 | 02 | 6883 20 | 0033 | Schwarz Sandro | 13 | 4 | 14.02.04 | 1164,468 | 18,27 | 28,42 | | 5/5 | | | 5 | 3 | 364 | |
| 324a | 133a02 | 5496 20 | 0031 | Thoma Jakob | 07 | 14 | 13.53.40 | 1164,313 | 18,02 | 27,87 | | 5/2 | | | 2 | 1 | 324 | | |
| 324b | 133b02 | 8767 20 | 2051 | Thoma Jakob | 07 | 15 | 13.53.40 | 1164,313 | 18,02 | 27,87 | | 5/4 | 1 | 2 | 4 | 4 | 369 | | |
| 326a | 135a02 | 0454 20 | 0151 | SG Dillinger/Kusser | 14 | 38 | 13.51.15 | 1163,859 | 17,51 | 26,78 | | 5/4 | | 1 | 4 | 4 | 326 | | |
| 326b | 135b02 | 0454 20 | 0153 | SG Dillinger/Kusser | 14 | 39 | 13.51.15 | 1163,859 | 17,51 | 26,78 | | 5/1 | | | 1 | 1 | 328 | | |
| 328 | 137 | 02 | 0454 20 | 0225 | SG Dillinger/Kusser | 14 | 40 | 13.51.21 | 1163,460 | 17,01 | 25,68 | | 5/4 | | 2 | 4 | 4 | 358 | |
| 329 | 138 | 02 | 6616 20 | 0225 | Rametsteiner H.&E. | 09 | 3 | 14.16.17 | 1163,403 | 16,75 | 25,14 | | 5/4 | | | 4 | 2 | | |
| 330 | 192 | 04 | 5470 20 | 0655 | Gubisch F,Chr.,Jonas | 06 | 7 | 13.53.34 | 1163,186 | 16,50 | 9,91 | V | 5/5 | 1 | 2 | 5 | 5 | 361 | |
| 331 | 139 | 02 | 6883 20 | 0291 | Krenn M. u. F. | 13 | 12 | 13.57.12 | 1162,956 | 16,24 | 24,59 | | 5/2 | | | 2 | 1 | 332 | |
| 332 | 140 | 02 | 6883 20 | 0288 | Krenn M. u. F. | 13 | 13 | 13.57.14 | 1162,826 | 15,99 | 24,04 | | 5/2 | | 1 | 2 | 2 | 336 | |
| 333 | 141 | 02 | 0454 20 | 0034 | SG Büttner | 14 | 21 | 13.54.23 | 1162,763 | 15,74 | 23,50 | | 5/2 | | | 2 | 2 | 335 | |
| 334 | 193 | 04 | 8951 20 | 0334 | Geier L.+D.+A.+Ella | 09 | 35 | 13.55.24 | 1162,708 | 15,48 | 9,43 | | 5/1 | | | 1 | 1 | 348 | |
| 335 | 142 | 02 | 0454 20 | 0019 | SG Büttner | 14 | 22 | 13.54.24 | 1162,697 | 15,23 | 22,95 | | 5/1 | | | 1 | 1 | 376 | |
| 336 | 143 | 02 | 6883 20 | 0298 | Krenn M. u. F. | 13 | 14 | 13.57.16 | 1162,696 | 14,97 | 22,40 | | 5/2 | | | 2 | 2 | | |
| 337 | 194 | 04 | 7075 20 | 0328 | SG Siglmüller | 26 | 21 | 13.55.25 | 1162,090 | 14,72 | 8,96 | | 5/2 | | | 2 | 2 | 339 | |
| 338 | 144 | 02 | 6883 20 | 0306 | Schwarz Kurt | 13 | 15 | 14.00.45 | 1161,988 | 14,47 | 21,86 | V | 5/4 | | | 1 | 4 | 3 | |
| 339 | 195 | 04 | 5470 20 | 0640 | SG Siglmüller | 26 | 22 | 13.55.27 | 1161,958 | 14,21 | 8,49 | | 5/2 | | 1 | 2 | 2 | 356 | |
| 340 | 196 | 04 | 7569 20 | 0262 | SG Gründinger | 05 | 26 | 13.57.26 | 1161,954 | 13,96 | 8,02 | | 5/3 | | 1 | 3 | 3 | 342 | |
| 341 | 197 | 04 | 7075 20 | 0103 | Simmel Paul.M.u.S. | 26 | 10 | 14.01.14 | 1161,883 | 13,71 | 7,55 | | 5/2 | | | 2 | 2 | 344 | |
| 342 | 198 | 04 | 7569 20 | 0234 | SG Gründinger | 05 | 27 | 13.57.28 | 1161,824 | 13,45 | 7,08 | | 5/4 | 1 | 1 | 4 | 4 | | |
| 343 | 199 | 04 | 6529 20 | 0676 | Blöchl Gerhard | 07 | 3 | 13.54.09 | 1161,645 | 13,20 | 6,60 | | 5/2 | | | 2 | 2 | 380 | |
| 344 | 200 | 04 | 7075 20 | 0128 | Simmel Paul.M.u.S. | 26 | 11 | 14.01.19 | 1161,562 | 12,94 | 6,13 | | 5/4 | | 1 | 4 | 4 | 362 | |
| 345 | 201 | 04 | 7074 20 | 0755 | Schönberger Josef | 25 | 21 | 13.59.54 | 1161,427 | 12,69 | 5,66 | | 5/4 | 1 | 2 | 4 | 4 | 346 | |
| 346 | 202 | 04 | 7074 20 | 0736 | Schönberger Josef | 25 | 22 | 13.59.55 | 1161,363 | 12,44 | 5,19 | | 5/2 | | 1 | 2 | 2 | 347 | |
| 347 | 203 | 04 | 7074 20 | 0741 | Schönberger Josef | 25 | 23 | 13.59.56 | 1161,298 | 12,18 | 4,72 | | 5/4 | 1 | 2 | 4 | 4 | 377 | |
| 348 | 204 | 04 | 6529 20 | 0527 | Geier L.+D.+A.+Ella | 09 | 36 | 13.56.00 | 1160,351 | 11,93 | 4,25 | | 5/5 | 1 | 1 | 4 | 5 | 350 | |
| 349 | 205 | 04 | 7074 20 | 0782 | Denk Josef | 25 | 20/2 | 1 14.01.47 | 1160,235 | 11,68 | 3,77 | | 5/1 | | | 1 | 1 | 393 | |
| 350 | 206 | 04 | 7515 20 | 1253 | Geier L.+D.+A.+Ella | 09 | 37 | 13.56.03 | 1160,155 | 11,42 | 3,30 | | 5/4 | 1 | 1 | 3 | 4 | 357 | |
| 351 | 145 | 02 | 5007 20 | 0289 | Allmannsberger/Kainz | 02 | 13 | 13.59.18 | 1160,097 | 11,17 | 21,31 | | 5/3 | 1 | 1 | 3 | 3 | 353 | |
| 352 | 146 | 02 | 5270 20 | 0549 | SG Pilsl / Tschache | 04 | 8 | 14.06.08 | 1159,919 | 10,91 | 20,77 | | 5/2 | | | 2 | 2 | 354 | |
| 353 | 147 | 02 | 5007 20 | 0330 | Allmannsberger/Kainz | 02 | 14 | 13.59.21 | 1159,903 | 10,66 | 20,22 | | 5/2 | | | 2 | 1 | 374 | |
| 354 | 148 | 02 | 5270 20 | 0556 | SG Pilsl / Tschache | 04 | 9 | 14.06.11 | 1159,730 | 10,41 | 19,67 | | 5/3 | 1 | 1 | 3 | 3 | 368 | |
| 355 | 207 | 04 | 7040 20 | 0157 | Freund Heinrich | 27 | 28 | 13.58.39 | 1159,290 | 10,15 | 2,83 | | 5/4 | 1 | 2 | 4 | 4 | 359 | |
| 356 | 208 | 04 | 5470 20 | 0646 | SG Siglmüller | 26 | 23 | 13.56.08 | 1159,277 | 9,90 | 2,36 | | 5/2 | | | 2 | 2 | | |
| 357 | 209 | 04 | 7515 20 | 1211 | Geier L.+D.+A.+Ella | 09 | 38 | 13.56.22 | 1158,916 | 9,64 | 1,89 | | 5/4 | | 1 | 4 | 4 | 365 | |
| 358 | 149 | 02 | 0454 20 | 0191 | SG Dillinger/Kusser | 14 | 41 | 13.52.30 | 1158,885 | 9,39 | 19,13 | | 5/3 | 1 | 2 | 3 | 3 | 360 | |
| 359 | 210 | 04 | 7040 20 | 0146 | Freund Heinrich | 27 | 29 | 13.58.47 | 1158,773 | 9,14 | 1,42 | | 5/4 | | 1 | 3 | 4 | 372 | |
| 360 | 150 | 02 | 5138 20 | 3377 | SG Dillinger/Kusser | 14 | 42 | 13.52.32 | 1158,753 | 8,88 | 18,58 | | 5/4 | 1 | 1 | 4 | 4 | 366 | |
| 361 | 211 | 04 | 5470 20 | 0631 | Gubisch F,Chr.,Jonas | 06 | 8 | 13.54.42 | 1158,713 | 8,63 | 0,94 | V | 5/5 | 1 | 1 | 5 | 5 | 363 | |
| 362 | 212 | 04 | 7075 20 | 0106 | Simmel Paul.M.u.S. | 26 | 12 | 14.02.06 | 1158,550 | 8,38 | 0,47 | | 5/3 | | 1 | 2 | 3 | 394 | |
| 363 | | | 5470 20 | 0668 | Gubisch F,Chr.,Jonas | 06 | 9 | 13.54.45 | 1158,516 | 8,12 | | | 5/2 | | | 2 | 1 | 370 | |
| 364 | 151 | 02 | 6883 20 | 0082 | Schwarz Sandro | 13 | 5 | 14.03.40 | 1158,333 | 7,87 | 18,03 | | 5/4 | 1 | 2 | 4 | 4 | 389 | |
| 365 | | | 7515 20 | 1166 | Geier L.+D.+A.+Ella | 09 | 39 | 13.56.31 | 1158,329 | 7,61 | | V | D | 5/5 | 1 | 2 | 5 | 4 | 367 |
| 366 | 152 | 02 | 5138 20 | 3525 | SG Dillinger/Kusser | 14 | 43 | 13.52.40 | 1158,226 | 7,36 | 17,49 | V | D | 5/2 | 1 | 1 | 2 | 2 | 378 |
| 367 | | | 7515 20 | 1194 | Geier L.+D.+A.+Ella | 09 | 40 | 13.56.33 | 1158,199 | 7,11 | | | 5/2 | | | 2 | 1 | | |
| 368 | 153 | 02 | 5270 20 | 0553 | SG Pilsl / Tschache | 04 | 10 | 14.06.37 | 1158,091 | 6,85 | 16,94 | | 5/1 | | | 1 | 1 | | |
| 369 | 154 | 02 | 5496 20 | 0050 | Thoma Jakob | 07 | 16 | 13.55.27 | 1157,285 | 6,60 | 16,39 | | 5/2 | | 1 | 2 | 1 | 385 | |
| 370 | | | 5470 20 | 0654 | Gubisch F,Chr.,Jonas | 06 | 10 | 13.55.05 | 1157,207 | 6,35 | | | 5/2 | | | 2 | 1 | 371 | |
| 371 | | | 5470 20 | 0673 | Gubisch F,Chr.,Jonas | 06 | 11 | 13.55.06 | 1157,142 | 6,09 | | | 5/3 | | | 3 | 2 | | |
| 372 | | | 7040 20 | 0140 | Freund Heinrich | 27 | 30 | 13.59.20 | 1156,644 | 5,84 | | | 5/2 | | | 1 | 1 | 373 | |
| 373 | | | 7040 20 | 0176 | Freund Heinrich | 27 | 31 | 13.59.23 | 1156,450 | 5,58 | | | 5/2 | | | 2 | 1 | | |
| 374 | 155 | 02 | 5007 20 | 0320 | Allmannsberger/Kainz | 02 | 15 | 14.00.17 | 1156,298 | 5,33 | 15,85 | | 5/3 | | | 3 | 3 | | |
| 375 | | | 7215 20 | 0615 | Schauberger M. | 08 | 13 | 14.12.18 | 1156,020 | 5,08 | | | 5/1 | | | 1 | 0 | 381 | |
| 376 | 156 | 02 | 0454 20 | 0029 | SG Büttner | 14 | 23 | 13.56.08 | 1155,891 | 4,82 | 15,30 | | 5/2 | | | 2 | 2 | | |
| 377 | | | 7074 20 | 0731 | Schönberger Josef | 25 | 24 | 14.01.30 | 1155,264 | 4,57 | | | 5/3 | 1 | 1 | 3 | 2 | 382 | |
| 378a | 157a02 | 0454 20 | 0176 | SG Dillinger/Kusser | 14 | 44 | 13.53.27 | 1155,134 | 4,31 | 14,75 | | 5/2 | | 1 | 1 | 2 | 2 | | |
| 378b | 157b02 | 5138 20 | 3339 | SG Dillinger/Kusser | 14 | 45 | 13.53.27 | 1155,134 | 4,31 | 14,75 | | 5/4 | | | 1 | 4 | 3 | 378 | |
| 380 | | | 6529 20 | 0653 | Blöchl Gerhard | 07 | 4 | 13.55.49 | 1155,101 | 3,81 | | | 5/3 | | 1 | 3 | 2 | | |
| 381 | | | 7215 20 | 0613 | Schauberger M. | 08 | 14 | 14.12.35 | 1154,972 | 3,55 | | | 5/4 | 1 | 2 | 4 | 3 | | |
| 382 | | | 7074 20 | 0710 | Schönberger Josef | 25 | 25 | 14.01.36 | 1154,881 | 3,30 | | | 5/3 | | | 2 | 2 | 388 | |
| 383 | 159 | 02 | 4834 20 | 0591 | Hazoth Hermann | 01 | 13 | 14.11.46 | 1154,687 | 3,05 | 13,66 | | 5/3 | | 1 | 3 | 3 | 390 | |
| 384 | | | 5140 20 | 0068 | SG Weber/Simet | 06 | 17 | 13.54.59 | 1154,500 | 2,79 | | | 5/3 | | | 3 | 2 | | |
| 385 | 160 | 02 | 5496 20 | 0023 | Thoma Jakob | 07 | 17 | 13.56.14 | 1154,225 | 2,54 | 13,11 | | 5/4 | 1 | 2 | 4 | 4 | | |
| 386a | | | 4503 20 | 0069 | SG Kern&Liebl Sandra | 27 | 9 | 14.01.36 | 1154,198 | 2,28 | | | 5/4 | | | 4 | 3 | | |
| 386b | | | 7040 20 | 0204 | SG Kern&Liebl Sandra | 27 | 10 | 14.01.36 | 1154,198 | 2,28 | | | 5/4 | 1 | 2 | 4 | 3 | 386 | |
| 388 | | | 7074 20 | 0703 | Schönberger Josef | 25 | 26 | 14.01.51 | 1153,924 | 1,78 | | | 5/2 | | 1 | 2 | 1 | | |
| 389 | 161 | 02 | 5270 20 | 0523 | Schwarz Sandro | 13 | 6 | 14.05.01 | 1153,206 | 1,52 | 12,57 | | 5/2 | | | 2 | 2 | | |
| 390 | 162 | 02 | 4834 20 | 0506 | Hazoth Hermann | 01 | 14 | 14.12.11 | 1153,146 | 1,27 | 12,02 | | 5/4 | 1 | 1 | 4 | 4 | 391 | |
| 391 | 163 | 02 | 4834 20 | 0585 | Hazoth Hermann | 01 | 15 | 14.12.14 | 1152,961 | 1,02 | 11,48 | | 5/4 | 1 | 1 | 4 | 4 | | |
| 392 | | | 7215 20 | 0680 | Hellauer L. | 08 | 13 | 14.14.09 | 1152,560 | 0,76 | | | 4/3 | | | 3 | 2 | | |
| 393 | | | 7074 20 | 0788 | Denk Josef | 25 | 2 | 14.03.53 | 1152,218 | 0,51 | | | 5/1 | | | 1 | 0 | | |
| 394 | | | 7075 20 | 0120 | Simmel Paul.M.u.S. | 26 | 13 | 14.03.49 | 1152,004 | 0,25 | | | 5/1 | | | 1 | 0 | | |
| | 164 | 02 | 5270 20 | 0558 | SG Pilsl / Tschache | 04 | 11 | 14.08.15 | 1151,955 | | 10,93 | | 5/3 | | 1 | 1 | 2 | 2 | |
| | 165 | 02 | 4834 20 | 0667 | Hazoth Hermann | 01 | 16 | 14.12.35 | 1151,670 | | 10,38 | | 5/2 | 1 | 1 | 1 | 2 | | |
| | 166 | 02 | 0454 20 | 0196 | SG Dillinger/Kusser | 14 | 46 | 13.54.24 | 1151,406 | | 9,84 | | 5/2 | | 1 | 1 | 2 | | |
| | 167 | 02 | 5049 20 | 0330 | Zirngibl Rainer | 13 | 35/0 | 1 13.56.12 | 1151,161</ | | | | | | | | | | |

| FG. PRS | RV. PRS | R V | Ring-Nr. | Züchtername | VE. | Ges/Prs. | | Uhr Ankunft | Dif | M/Min | ASPKT | | Benannte | Gesamt | | | | | FOL PRS |
|------------|------------|--------|----------|----------------------|-----|----------|----------|----------------|-----|-------|-------|------|----------|--------|----|----|----|----|------------|
| | | | | | | FG | RV | | | | -FG- | -RV- | | FL | HH | RE | RG | FG | |
| 170 | 02 | 0454 | 20 0235 | SG Dillinger/Kusser | 14 | 47 | 13.54.37 | 1150,559 | | | 7,65 | | 5/ 1 | | | | 1 | | |
| 171 | 02 | 5496 | 20 0034 | Thoma Jakob | 07 | 18 | 13.57.13 | 1150,407 | | | 7,10 | | 5/ 3 | 1 | 2 | 3 | | | |
| 172 | 02 | 5270 | 20 0554 | SG Pilsl / Tschache | 04 | 13 | 14.08.46 | 1150,027 | | | 6,56 | | 5/ 1 | | | | 1 | | |
| 173 | 02 | 5138 | 20 3395 | SG Dillinger/Kusser | 14 | 48 | 13.54.50 | 1149,714 | | | 6,01 | | 5/ 1 | | | | 1 | | |
| 174 | 02 | 7075 | 20 0030 | Krenn M. u. F. | 13 | 15 | 14.00.40 | -1 1149,548 | | | 5,46 | V | 5/ 5 | 1 | 2 | 4 | 4 | | |
| 175 | 02 | 0454 | 20 0140 | SG Dillinger/Kusser | 14 | 49 | 13.54.56 | 1149,324 | | | 4,92 | | 5/ 2 | | 1 | 1 | 2 | | |
| 176 | 02 | 5138 | 20 3594 | SG Dillinger/Kusser | 14 | 50 | 13.55.20 | 1147,767 | | | 4,37 | | 5/ 3 | 1 | 1 | 2 | 3 | | |
| 177 | 02 | 5138 | 20 3357 | SG Dillinger/Kusser | 14 | 51 | 13.55.23 | 1147,573 | | | 3,83 | | 5/ 1 | | | | 1 | | |
| 178 | 02 | 5496 | 20 0029 | Thoma Jakob | 07 | 19 | 13.58.01 | 1147,318 | | | 3,28 | | 5/ 3 | 1 | 2 | 2 | 3 | | |
| 179 | 02 | 5007 | 20 0378 | Rametsteiner H.&E. | 09 | 4 | 14.20.47 | 1147,083 | | | 2,73 | | 5/ 1 | | | | 1 | | |
| 180 | 02 | 0454 | 20 0217 | Schwarz Sandro | 13 | 7 | 14.06.40 | 1147,001 | | | 2,19 | 99 | 5/ 3 | | 1 | 2 | 3 | | |
| 181 | 02 | 5007 | 20 0352 | Allmannsberger/Kainz | 02 | 17 | 14.03.03 | 1145,742 | | | 1,64 | | 5/ 3 | | 1 | 2 | 3 | | |
| 182 | 02 | 6883 | 20 0036 | Schwarz Sandro | 13 | 8 | 14.07.12 | 1145,010 | | | 1,09 | | 5/ 4 | | 1 | 3 | 4 | | |
| 183 | 02 | 6883 | 20 0005 | Schwarz Sandro | 13 | 9 | 14.07.19 | 1144,575 | | | 0,55 | | 5/ 4 | 1 | 2 | 3 | 4 | | |

-----E S F O L G E N-----

| | | | | | | | | | | | | | | | | | |
|----|------|---------|----------------------|----|--|--|----------|-------------|--|--|--|---|------|---|---|---|---|
| 04 | 5470 | 20 0558 | SG Weber/Simet | 06 | | | 13.55.36 | 1151,942 | | | | | 5/ 2 | | 1 | 2 | 2 |
| 04 | 7075 | 20 0122 | Simmel Paul.M.u.S. | 26 | | | 14.03.51 | 1151,878 | | | | | 5/ 2 | | | 2 | 2 |
| 04 | 6529 | 20 0661 | Blöchl Gerhard | 07 | | | 13.56.39 | 1151,856 | | | | | 5/ 3 | | 1 | 2 | 3 |
| 04 | 7074 | 20 0772 | Denk Josef | 25 | | | 14.04.10 | -1 1151,145 | | | | | 5/ 3 | 1 | 1 | 2 | 3 |
| 04 | 7075 | 20 0139 | Simmel Paul.M.u.S. | 26 | | | 14.04.03 | 1151,120 | | | | | 5/ 2 | | | 2 | 2 |
| 04 | 7075 | 20 0340 | SG Siglmüller | 26 | | | 13.58.22 | -1 1150,600 | | | | V | 5/ 4 | | 2 | 4 | 4 |
| 04 | 7515 | 20 1164 | Geier L.+D.+A.+Ella | 09 | | | 13.58.35 | 1150,312 | | | | | 5/ 2 | 1 | 1 | 2 | 2 |
| 04 | 7040 | 20 0168 | Freund Heinrich | 27 | | | 14.01.32 | 1148,205 | | | | | 5/ 2 | | 1 | 2 | 2 |
| 04 | 5569 | 20 1181 | Gubisch F,Chr.,Jonas | 06 | | | 13.57.52 | 2 1146,393 | | | | | 5/ 2 | | 1 | 2 | 2 |
| 04 | 7215 | 20 0650 | Hellauer L. | 08 | | | 14.16.04 | -1 1145,571 | | | | | 4/ 3 | 1 | 2 | 2 | 3 |
| 02 | 5270 | 20 0543 | SG Pilsl / Tschache | 04 | | | 14.10.35 | 1143,300 | | | | | 5/ 2 | | 1 | 2 | 2 |
| 02 | 5496 | 20 0037 | Thoma Jakob | 07 | | | 13.59.07 | 1143,099 | | | | | 5/ 2 | 1 | 2 | 2 | 2 |
| 02 | 0454 | 20 0200 | SG Dillinger/Kusser | 14 | | | 13.56.33 | 1143,059 | | | | | 5/ 1 | | 1 | 1 | 1 |
| 02 | 0454 | 20 0037 | SG Büttner | 14 | | | 13.59.48 | 1141,755 | | | | | | | | | |
| 02 | 5007 | 20 0350 | Allmannsberger/Kainz | 02 | | | 14.04.46 | 1139,288 | | | | | 5/ 2 | | 2 | 2 | 2 |
| 02 | 4834 | 20 0586 | Hazoth Hermann | 01 | | | 14.16.00 | 1139,218 | | | | | 5/ 2 | 1 | 2 | 2 | 2 |
| 02 | 5007 | 20 0402 | Allmannsberger/Kainz | 02 | | | 14.04.49 | 1139,101 | | | | | | | | | |
| 02 | 4834 | 20 0596 | Hazoth Hermann | 01 | | | 14.16.02 | 1139,098 | | | | | 5/ 2 | | | 2 | 1 |
| 02 | 9840 | 20 0038 | Hazoth Hermann | 01 | | | 14.16.04 | 1138,978 | | | | | 5/ 2 | | 1 | 2 | 2 |
| 02 | 4834 | 20 0638 | Hazoth Hermann | 01 | | | 14.16.06 | 1138,858 | | | | V | 5/ 4 | 1 | 2 | 4 | 3 |

ZÜCHTEREINZELNACHWEISE RV 652/02 Passau

01.001 Hazoth Hermann * 359.993m * 63 / 16 = 25,4% *
RVPrs ----Tauben---- -M/Min-- ASPkt -Benannte- Gs/Prs-Km--ASPkt

| | | | | | | | |
|-----|--------------|----------|-------|---|------|------|-----|
| 7 | 4834-20- 510 | 1254.113 | 96,72 | V | 5/ 4 | 1046 | 238 |
| 21 | 4834-20- 567 | 1229.834 | 89,07 | | 5/ 3 | 737 | 216 |
| 38 | 4834-20- 543 | 1215.645 | 79,78 | | 5/ 4 | 868 | 124 |
| 65 | 4834-20- 522 | 1203.453 | 65,03 | | 5/ 2 | 595 | 148 |
| 71 | 7075-20- 49 | 1199.577 | 61,75 | | 4/ 3 | 868 | 125 |
| 77 | 4834-20- 623 | 1197.051 | 58,47 | | 5/ 4 | 737 | 194 |
| 78 | 4834-20- 625 | 1196.653 | 57,92 | | 5/ 2 | 625 | 86 |
| 86 | 4021-20- 964 | 1192.556 | 53,55 | | 5/ 4 | 1010 | 140 |
| 97 | 5206-20-1361 | 1185.292 | 47,54 | | 5/ 3 | 595 | 98 |
| 124 | 4834-20- 526 | 1170.138 | 32,79 | | 5/ 2 | 595 | 107 |
| 125 | 4834-20- 565 | 1170.011 | 32,24 | V | 5/ 2 | 625 | 113 |
| 127 | 4834-20- 531 | 1167.924 | 31,15 | | 5/ 3 | 625 | 31 |
| 159 | 4834-20- 591 | 1154.687 | 13,66 | | 5/ 3 | 737 | 148 |
| 162 | 4834-20- 506 | 1153.146 | 12,02 | | 5/ 4 | 945 | 92 |
| 163 | 4834-20- 585 | 1152.961 | 11,48 | | 5/ 4 | 945 | 128 |
| 165 | 4834-20- 667 | 1151.670 | 10,38 | | 5/ 2 | 625 | 49 |

02.002 Allmannsberger/Kainz * 347.217m * 40 / 17 = 42,5% *
RVPrs ----Tauben---- -M/Min-- ASPkt -Benannte- Gs/Prs-Km--ASPkt

| | | | | | | | | |
|-----|--------------|----------|-------|---|------|------|------|-----|
| 2 | 5007-20- 332 | 1266.676 | 99,45 | V | 99 | 5/ 5 | 1188 | 341 |
| 11 | 5007-20- 309 | 1244.877 | 94,54 | V | 5/ 4 | 1046 | 285 | |
| 33 | 5007-20- 318 | 1221.663 | 82,51 | V | 5/ 5 | 1188 | 283 | |
| 50 | 5007-20- 285 | 1211.574 | 73,22 | V | 5/ 5 | 1188 | 289 | |
| 56 | 5007-20- 313 | 1206.033 | 69,95 | | 5/ 3 | 773 | 153 | |
| 99 | 5007-20- 301 | 1184.502 | 46,45 | | 5/ 3 | 352 | 46 | |
| 104 | 5007-20- 298 | 1181.412 | 43,72 | | 5/ 1 | 352 | 43 | |
| 118 | 5007-20- 331 | 1173.559 | 36,07 | | 5/ 3 | 494 | 60 | |
| 119 | 7216-20- 985 | 1173.295 | 35,52 | | 5/ 4 | 1010 | 95 | |
| 120 | 5007-20- 316 | 1173.229 | 34,97 | | 5/ 3 | 672 | 90 | |
| 122 | 5007-20- 337 | 1170.657 | 33,88 | | 5/ 3 | 803 | 104 | |
| 123 | 8389-20-4400 | 1170.526 | 33,33 | | 5/ 3 | 352 | 33 | |
| 145 | 5007-20- 289 | 1160.097 | 21,31 | | 5/ 3 | 803 | 116 | |
| 147 | 5007-20- 330 | 1159.903 | 20,22 | | 5/ 2 | 352 | 20 | |
| 155 | 5007-20- 320 | 1156.298 | 15,85 | | 5/ 3 | 672 | 84 | |
| 169 | 5007-20- 394 | 1150.741 | 8,20 | | 5/ 3 | 767 | 96 | |
| 181 | 5007-20- 352 | 1145.742 | 1,64 | | 5/ 3 | 773 | 67 | |

04.001 SG Pils / Tschache * 355.090m * 39 / 13 = 33,3% *
RVPrs ----Tauben---- -M/Min-- ASPkt -Benannte- Gs/Prs-Km--ASPkt

| | | | | | | | | |
|-----|--------------|----------|-------|--|------|------|-----|-----|
| 3 | 0454-20- 11 | 1262.542 | 98,91 | | 99 | 5/ 3 | 868 | 251 |
| 47 | 5270-20- 530 | 1213.015 | 74,86 | | 5/ 4 | 1010 | 147 | |
| 75 | 5270-20- 515 | 1197.134 | 59,56 | | 5/ 3 | 530 | 87 | |
| 89 | 5270-20- 514 | 1190.312 | 51,91 | | 5/ 3 | 625 | 60 | |
| 106 | 5270-20- 520 | 1180.616 | 42,62 | | 5/ 4 | 625 | 66 | |
| 113 | 5270-20- 557 | 1176.379 | 38,80 | | 5/ 3 | 595 | 108 | |
| 121 | 5270-20- 519 | 1171.656 | 34,43 | | 5/ 2 | 530 | 42 | |
| 146 | 5270-20- 549 | 1159.919 | 20,77 | | 5/ 2 | 494 | 22 | |
| 148 | 5270-20- 556 | 1159.730 | 19,67 | | 5/ 3 | 767 | 119 | |
| 153 | 5270-20- 553 | 1158.091 | 16,94 | | 5/ 1 | 352 | 16 | |
| 164 | 5270-20- 558 | 1151.955 | 10,93 | | 5/ 3 | 625 | 48 | |
| 168 | 5270-20- 533 | 1150.959 | 8,74 | | 5/ 4 | 767 | 83 | |
| 172 | 5270-20- 554 | 1150.027 | 6,56 | | 5/ 1 | 352 | 6 | |

07.002 Thoma Jakob * 341.920m * 38 / 19 = 50,0% *
RVPrs ----Tauben---- -M/Min-- ASPkt -Benannte- Gs/Prs-Km--ASPkt

| | | | | | | | |
|-----|--------------|----------|-------|--|------|------|-----|
| 41 | 5496-20- 6 | 1214.061 | 78,14 | | 5/ 3 | 868 | 169 |
| 41 | 8767-20-2238 | 1214.061 | 78,14 | | 5/ 3 | 803 | 221 |
| 43 | 8767-20-2236 | 1213.989 | 77,05 | | 5/ 4 | 915 | 237 |
| 43 | 8767-20-2033 | 1213.989 | 77,05 | | 5/ 4 | 1010 | 219 |
| 54 | 5496-20- 49 | 1206.989 | 71,04 | | 5/ 2 | 530 | 84 |
| 63 | 5496-20- 36 | 1204.509 | 66,12 | | 4/ 2 | 625 | 103 |
| 64 | 5496-20- 47 | 1204.297 | 65,57 | | 5/ 2 | 352 | 65 |
| 85 | 5496-20- 51 | 1192.883 | 54,10 | | 5/ 3 | 625 | 81 |
| 100 | 8767-20-2059 | 1184.275 | 45,90 | | 5/ 4 | 1046 | 260 |
| 115 | 5496-20- 52 | 1175.319 | 37,70 | | 5/ 3 | 595 | 71 |
| 126 | 5496-20- 61 | 1168.026 | 31,69 | | 5/ 4 | 1046 | 267 |
| 128 | 5496-20- 3 | 1167.095 | 30,60 | | 5/ 5 | 1046 | 222 |
| 129 | 8767-20-2235 | 1167.029 | 30,05 | | 5/ 3 | 773 | 142 |
| 133 | 8767-20-2051 | 1164.313 | 27,87 | | 5/ 4 | 1046 | 302 |
| 133 | 5496-20- 31 | 1164.313 | 27,87 | | 5/ 2 | 352 | 27 |
| 154 | 5496-20- 50 | 1157.285 | 16,39 | | 5/ 2 | 352 | 16 |
| 160 | 5496-20- 23 | 1154.225 | 13,11 | | 5/ 4 | 1010 | 152 |
| 171 | 5496-20- 34 | 1150.407 | 7,20 | | 5/ 3 | 773 | 182 |
| 178 | 5496-20- 29 | 1147.318 | 3,28 | | 5/ 3 | 868 | 184 |

09.015 Rametsteiner H.&E. * 367.965m * 45 / 4 = 8,9% *
RVPrs ----Tauben---- -M/Min-- ASPkt -Benannte- Gs/Prs-Km--ASPkt

| | | | | | | | |
|-----|--------------|----------|-------|---|------|-----|----|
| 109 | 6616-20- 223 | 1179.249 | 40,98 | V | 5/ 1 | 352 | 40 |
| 116 | 6883-20- 232 | 1175.294 | 37,16 | | 5/ 1 | 352 | 37 |
| 138 | 6616-20- 225 | 1163.403 | 25,14 | | 5/ 4 | 530 | 25 |
| 179 | 5007-20- 378 | 1147.083 | 2,73 | | 5/ 1 | 352 | 2 |

ZÜCHTEREINZELNACHWEISE RV 652/02 Passau

13.006 Krenn M. u. F. * 345.650m * 37 / 15 = 40,5% *
RVPrs ----Tauben---- -M/Min-- ASPkt -Benannte- Gs/Prs-Km--ASPkt

| | | | | | | | |
|-----|--------------|----------|-------|----|------|------|-----|
| 8 | 6883-20- 224 | 1251.297 | 96,17 | | 5/ 4 | 944 | 190 |
| 35 | 6883-20- 275 | 1220.013 | 81,42 | | 5/ 3 | 767 | 238 |
| 39 | 6883-20- 292 | 1215.366 | 79,23 | | 5/ 2 | 595 | 145 |
| 60 | 6883-20- 304 | 1205.265 | 67,76 | | 5/ 3 | 494 | 83 |
| 61 | 6883-20- 261 | 1204.985 | 67,21 | 99 | 5/ 2 | 625 | 70 |
| 62 | 6883-20- 277 | 1204.775 | 66,67 | V | 5/ 5 | 1188 | 293 |
| 93 | 6883-20- 270 | 1187.461 | 49,73 | V | 5/ 4 | 737 | 168 |
| 98 | 6883-20- 273 | 1184.883 | 46,99 | | 5/ 3 | 737 | 138 |
| 102 | 6883-20- 310 | 1183.328 | 44,81 | | 5/ 4 | 737 | 127 |
| 107 | 6883-20- 316 | 1180.566 | 42,08 | | 5/ 3 | 494 | 100 |
| 117 | 6883-20- 309 | 1173.817 | 36,61 | | 5/ 3 | 530 | 61 |
| 139 | 6883-20- 291 | 1162.956 | 24,59 | | 5/ 2 | 352 | 24 |
| 140 | 6883-20- 288 | 1162.826 | 24,04 | | 5/ 2 | 595 | 54 |
| 143 | 6883-20- 298 | 1162.696 | 22,40 | | 5/ 2 | 494 | 44 |
| 174 | 7075-20- 30 | 1149.548 | 5,46 | V | 5/ 5 | 1010 | 183 |

13.007 Schwarz Sandro * 351.747m * 56 / 9 = 16,1% *
RVPrs ----Tauben---- -M/Min-- ASPkt -Benannte- Gs/Prs-Km--ASPkt

| | | | | | | | |
|-----|--------------|----------|-------|----|------|------|-----|
| 26 | 6883-20- 24 | 1226.739 | 86,34 | | 5/ 5 | 1010 | 334 |
| 67 | 6883-20- 64 | 1202.006 | 63,93 | | 5/ 4 | 915 | 154 |
| 95 | 6883-20- 74 | 1186.264 | 48,63 | | 5/ 3 | 868 | 189 |
| 132 | 6883-20- 33 | 1164.468 | 28,42 | | 5/ 5 | 672 | 134 |
| 151 | 6883-20- 82 | 1158.333 | 18,03 | | 5/ 4 | 1010 | 223 |
| 161 | 5270-20- 523 | 1153.206 | 12,57 | | 5/ 2 | 494 | 38 |
| 180 | 0454-20- 217 | 1147.001 | 2,19 | 99 | 5/ 3 | 737 | 60 |
| 182 | 6883-20- 36 | 1145.010 | 1,09 | | 5/ 4 | 915 | 107 |
| 183 | 6883-20- 5 | 1144.575 | 0,55 | | 5/ 4 | 1010 | 86 |

13.009 Schwarz Kurt * 349.468m * 32 / 15 = 46,9% *
RVPrs ----Tauben---- -M/Min-- ASPkt -Benannte- Gs/Prs-Km--ASPkt

| | | | | | | | |
|-----|--------------|----------|-------|---|------|------|-----|
| 16 | 0454-20- 72 | 1237.712 | 91,80 | V | 5/ 5 | 1188 | 324 |
| 17 | 6883-20- 393 | 1237.420 | 91,26 | | 5/ 2 | 595 | 165 |
| 25 | 6883-20- 381 | 1226.777 | 86,89 | V | 5/ 4 | 945 | 162 |
| 29 | 6883-20- 399 | 1226.275 | 84,70 | | 5/ 3 | 352 | 84 |
| 32 | 6883-20- 375 | 1221.774 | 83,06 | | 5/ 2 | 494 | 111 |
| 37 | 6883-20- 390 | 1219.004 | 80,33 | | 5/ 3 | 803 | 158 |
| 74 | 6883-20- 315 | 1197.629 | 60,11 | | 5/ 2 | 494 | 99 |
| 80 | 6883-20- 361 | 1195.784 | 56,83 | | 5/ 3 | 672 | 134 |
| 81 | 6883-20- 398 | 1195.648 | 56,28 | V | 5/ 4 | 915 | 311 |
| 82 | 6883-20- 372 | 1195.580 | 55,74 | | 5/ 2 | 494 | 115 |
| 90 | 6883-20- 385 | 1189.611 | 51,37 | | 5/ 3 | 737 | 140 |
| 103 | 6883-20- 383 | 1182.366 | 44,26 | | 5/ 4 | 672 | 133 |
| 110 | 6883-20- 400 | 1178.048 | 40,44 | | 5/ 1 | 352 | 40 |
| 111 | 6883-20- 374 | 1177.255 | 39,89 | | 5/ 3 | 773 | 208 |
| 144 | 6883-20- 306 | 1161.988 | 21,86 | V | 5/ 4 | 672 | 151 |

13.011 Zirngibl Rainer * 340.974m * 35 / 1 = 2,9% *
RVPrs ----Tauben---- -M/Min-- ASPkt -Benannte- Gs/Prs-Km--ASPkt

| | | | | | | | |
|-----|--------------|----------|------|--|------|-----|----|
| 167 | 5049-20- 330 | 1151.161 | 9,29 | | 3/ 2 | 494 | 54 |
|-----|--------------|----------|------|--|------|-----|----|

14.001 SG Büttner * 342.298m * 52 / 23 = 44,2% *
RVPrs ----Tauben---- -M/Min-- ASPkt -Benannte- Gs/Prs-Km--ASPkt

| | | | | | | | |
|-----|--------------|----------|-------|---|------|------|-----|
| 1 | RP0512004129 | 1280.017 | *100* | V | 5/ 4 | 945 | 171 |
| 4 | 0454-20- 1 | 1262.238 | 98,36 | | 5/ 3 | 672 | 227 |
| 5 | 0454-20- 2 | 1257.832 | 97,81 | | 5/ 1 | 352 | 97 |
| 6 | 0454-20- 40 | 1255.909 | 97,27 | V | 5/ 5 | 1188 | 409 |
| 9 | 0454-20- 76 | 1246.382 | 95,63 | | 5/ 3 | 803 | 156 |
| 9 | 0454-20- 32 | 1246.382 | 95,63 | | 5/ 3 | 773 | 232 |
| 15 | 0454-20- 48 | 1238.789 | 92,35 | | 4/ 2 | 530 | 106 |
| 20 | 0454-20- 58 | 1231.805 | 89,62 | V | 5/ 5 | 1188 | 280 |
| 31 | 0454-20- 60 | 1225.264 | 83,61 | | 5/ 3 | 803 | 162 |
| 40 | 0454-20- 31 | 1214.756 | 78,69 | | 5/ 3 | 530 | 97 |
| 58 | 0454-20- 44 | 1205.770 | 68,85 | | 5/ 3 | 595 | 105 |
| 66 | 0454-20- 25 | 1202.945 | 64,48 | | 5/ 4 | 773 | 229 |
| 72 | 0454-20- 14 | 1198.592 | 61,20 | | 5/ 4 | 803 | 139 |
| 83 | 0454-20- 16 | 1193.993 | 55,19 | | 5/ 3 | 494 | 136 |
| 84 | 5496-20- 140 | 1193.924 | 54,64 | | 5/ 4 | 915 | 128 |
| 88 | 0454-20- 8 | 1191.776 | 52,46 | V | 5/ 4 | 945 | 224 |
| 94 | 0454-20- 27 | 1186.269 | 49,18 | | 5/ 1 | 352 | 49 |
| 96 | 0454-20- 41 | 1185.995 | 48,09 | | 5/ 1 | 352 | 48 |
| 108 | 0454-20- 3 | 1179.931 | 41,53 | | 5/ 3 | 767 | 133 |
| 131 | 0454-20- 23 | 1165.931 | 28,96 | | 5/ 3 | 595 | 67 |
| 141 | 0454-20- 34 | 1162.763 | 23,50 | | 5/ 2 | 494 | 59 |
| 142 | 0454-20- 19 | 1162.697 | 22,95 | | 5/ 1 | 352 | 22 |
| 156 | 0454-20- 29 | 1155.891 | 15,30 | | 5/ 2 | 530 | 61 |

14.005 SG Dillinger/Kusser * 338.974m * 110 / 51 = 46,4% *
RVPrs ----Tauben---- -M/Min-- ASPkt -Benannte- Gs/Prs-Km--ASPkt

| | | | | | | | |
|----|--------------|----------|-------|---|------|------|-----|
| 12 | 0454-20- 232 | 1241.890 | 93,99 | | 5/ 4 | 737 | 223 |
| 13 | 0454-20- 157 | 1240.224 | 93,44 | V | 5/ 5 | 1188 | 281 |
| 14 | 0454-20- 256 | 1239.620 | 92,90 | | 5/ 3 | 672 | 174 |
| 18 | 5138-20-3486 | 1236.680 | 90,71 | | 5/ 3 | 625 | 140 |
| 19 | 0454-20- 185 | 1232.558 | 90,16 | | 5/ 2 | 625 | 168 |

ZÜCHTEREINZELNACHWEISE RV 652/04 Waldkirchen

| 14.005 SG Dillinger/Kusser * 338.974m * 110 / 51 = 46,4% * | | | | | | | | | | | |
|---|--------------|-----------|----------|-------|------------|---------|------|-------|---|--|--|
| RVPrs | ---- | Taube---- | -M/Min-- | ASPkt | -Benannte- | Gs/Prs- | Km-- | ASPkt | | | |
| 22 | 5138-20-3272 | 1228.018 | 88,52 | | 5/3 | 803 | 163 | | | | |
| 23 | 5138-20-3392 | 1227.722 | 87,98 | | 4/2 | 595 | 106 | | | | |
| 24 | 5138-20-3397 | 1227.425 | 87,43 | | 5/2 | 595 | 129 | | | | |
| 27 | 0454-20-183 | 1226.611 | 85,79 | | 5/3 | 595 | 106 | | | | |
| 28 | 0454-20-201 | 1226.389 | 85,25 | | 5/3 | 773 | 97 | | | | |
| 30 | 5138-20-3331 | 1225.429 | 84,15 | | 5/3 | 868 | 199 | | | | |
| 34 | 0454-20-202 | 1221.161 | 81,97 | | 5/4 | 767 | 216 | | | | |
| 36 | 0454-20-158 | 1219.112 | 80,87 | | 5/4 | 915 | 242 | | | | |
| 45 | 0454-20-234 | 1213.438 | 75,96 | | 5/2 | 530 | 124 | | | | |
| 46 | 5138-20-3326 | 1213.149 | 75,41 | | 5/3 | 672 | 160 | | | | |
| 48 | 0454-20-199 | 1212.787 | 74,32 | | 5/3 | 530 | 139 | | | | |
| 49 | 0454-20-208 | 1211.703 | 73,77 | | 5/1 | 352 | 73 | | | | |
| 51 | 0454-20-211 | 1211.559 | 72,68 | | 5/3 | 773 | 236 | | | | |
| 52 | 5138-20-3507 | 1210.189 | 72,13 | | 5/4 | 1010 | 292 | | | | |
| 53 | 0454-20-150 | 1207.029 | 71,58 | | 5/3 | 773 | 163 | | | | |
| 55 | 5138-20-3665 | 1206.743 | 70,49 | | 5/5 | 1188 | 277 | | | | |
| 57 | 0454-20-164 | 1206.027 | 69,40 | | 5/2 | 494 | 83 | | | | |
| 59 | 0454-20-139 | 1205.598 | 68,31 | | 5/4 | 1046 | 322 | | | | |
| 68 | 0454-20-251 | 1201.255 | 63,39 | | 5/4 | 767 | 125 | | | | |
| 69 | 0454-20-198 | 1200.616 | 62,84 | | 5/5 | 945 | 312 | | | | |
| 70 | 0454-20-173 | 1199.625 | 62,30 | | 5/4 | 1046 | 194 | | | | |
| 73 | 5138-20-3800 | 1197.859 | 60,66 | | 5/2 | 595 | 145 | | | | |
| 76 | 5138-20-3494 | 1197.083 | 59,02 | | 5/3 | 773 | 116 | | | | |
| 79 | 0454-20-138 | 1196.238 | 57,38 | | 5/5 | 945 | 302 | | | | |
| 87 | 5138-20-3630 | 1192.241 | 53,01 | | 5/5 | 945 | 213 | | | | |
| 91 | 0454-20-186 | 1188.757 | 50,82 | | 5/4 | 945 | 303 | | | | |
| 92 | 0454-20-162 | 1188.548 | 50,27 | | 5/3 | 803 | 84 | | | | |
| 101 | 0454-20-204 | 1184.051 | 45,36 | | 5/5 | 1188 | 260 | | | | |
| 105 | 0454-20-260 | 1180.820 | 43,17 | | 5/4 | 737 | 145 | | | | |
| 112 | 0454-20-181 | 1176.448 | 39,34 | | 5/4 | 1046 | 140 | | | | |
| 114 | 5138-20-3360 | 1176.176 | 38,25 | | 5/4 | 945 | 249 | | | | |
| 130 | 5138-20-3454 | 1166.931 | 29,51 | | 5/4 | 945 | 276 | | | | |
| 135 | 0454-20-153 | 1163.859 | 26,78 | | 5/1 | 352 | 26 | | | | |
| 135 | 0454-20-151 | 1163.859 | 26,78 | | 5/4 | 915 | 190 | | | | |
| 137 | 0454-20-225 | 1163.460 | 25,68 | | 5/4 | 1010 | 208 | | | | |
| 149 | 0454-20-191 | 1158.885 | 19,13 | | 5/3 | 868 | 129 | | | | |
| 150 | 5138-20-3377 | 1158.753 | 18,58 | | 5/4 | 945 | 205 | | | | |
| 152 | 5138-20-3525 | 1158.226 | 17,49 | V | 5/2 | 625 | 116 | | D | | |
| 157 | 5138-20-3339 | 1155.134 | 14,75 | | 5/4 | 672 | 97 | | | | |
| 157 | 0454-20-176 | 1155.134 | 14,75 | | 5/2 | 625 | 88 | | | | |
| 166 | 0454-20-196 | 1151.406 | 9,84 | | 5/2 | 595 | 36 | | | | |
| 170 | 0454-20-235 | 1150.559 | 7,65 | | 5/1 | 352 | 7 | | | | |
| 173 | 5138-20-3395 | 1149.714 | 6,01 | | 5/1 | 352 | 6 | | | | |
| 175 | 0454-20-140 | 1149.324 | 4,92 | | 5/2 | 595 | 54 | | | | |
| 176 | 5138-20-3594 | 1147.767 | 4,37 | | 5/3 | 767 | 159 | | | | |
| 177 | 5138-20-3357 | 1147.573 | 3,83 | | 5/1 | 352 | 3 | | | | |

ZÜCHTEREINZELNACHWEISE RV 652/04 Waldkirchen

| 05.007 SG Gründinger * 345.604m * 53 / 27 = 50,9% * | | | | | | | | | | | |
|--|-------------|-----------|----------|-------|------------|---------|------|-------|----|--|--|
| RVPrs | ---- | Taube---- | -M/Min-- | ASPkt | -Benannte- | Gs/Prs- | Km-- | ASPkt | | | |
| 3 | 7569-20-228 | 1264.790 | 99,06 | | 5/2 | 524 | 134 | | | | |
| 4 | 7569-20-233 | 1261.943 | 98,58 | | 5/4 | 904 | 254 | | | | |
| 9 | 7569-20-221 | 1250.602 | 96,23 | | 5/4 | 904 | 369 | | | | |
| 13 | 7569-20-223 | 1247.743 | 94,34 | | 5/4 | 1035 | 316 | | | | |
| 19 | 7569-20-236 | 1235.992 | 91,51 | | 5/4 | 999 | 290 | | | | |
| 20 | 7569-20-254 | 1235.771 | 91,04 | | 5/3 | 794 | 207 | | | | |
| 21 | 7569-20-220 | 1235.477 | 90,57 | | 5/3 | 729 | 201 | | | | |
| 26 | 7569-20-251 | 1232.759 | 88,21 | | 5/5 | 1174 | 397 | | | | |
| 30 | 7569-20-218 | 1227.941 | 86,32 | | 5/5 | 1174 | 350 | | | | |
| 40 | 7569-20-257 | 1219.205 | 81,60 | | 5/1 | 349 | 81 | | | | |
| 52 | 7569-20-222 | 1215.346 | 75,94 | V | 5/5 | 1174 | 437 | | CD | | |
| 56 | 5170-20-57 | 1213.994 | 74,06 | | 5/3 | 860 | 115 | | | | |
| 57 | 7569-20-264 | 1213.639 | 73,58 | | 5/4 | 904 | 299 | | | | |
| 77 | 7569-20-247 | 1205.455 | 64,15 | | 5/2 | 590 | 146 | | | | |
| 84 | 7569-20-217 | 1200.778 | 60,85 | | 5/5 | 1174 | 294 | | | | |
| 85 | 7569-20-277 | 1200.500 | 60,38 | | 5/4 | 999 | 205 | | | | |
| 86 | 7569-20-213 | 1200.361 | 59,91 | | 5/5 | 1174 | 358 | | | | |
| 90 | 7569-20-269 | 1198.834 | 58,02 | V | 5/5 | 1174 | 346 | | D | | |
| 91 | 5170-20-55 | 1198.696 | 57,55 | | 5/3 | 765 | 159 | | | | |
| 110 | 7569-20-216 | 1189.209 | 48,58 | | 5/4 | 933 | 220 | | | | |
| 111 | 7569-20-202 | 1188.936 | 48,11 | | 5/3 | 765 | 211 | | | | |
| 114 | 7569-20-206 | 1188.528 | 46,70 | V | 5/5 | 1174 | 365 | | | | |
| 122 | 7569-20-256 | 1185.877 | 42,92 | | 5/3 | 663 | 142 | | | | |
| 131 | 7569-20-272 | 1181.619 | 38,68 | | 5/5 | 1174 | 323 | | | | |
| 176 | 5170-20-58 | 1171.142 | 17,45 | | 5/3 | 860 | 90 | | | | |
| 196 | 7569-20-262 | 1161.954 | 8,02 | | 5/3 | 729 | 111 | | | | |
| 198 | 7569-20-234 | 1161.824 | 7,08 | | 5/4 | 933 | 145 | | | | |

ZÜCHTEREINZELNACHWEISE RV 652/04 Waldkirchen

| 06.003 SG Weber/Simet * 340.514m * 69 / 17 = 24,6% * | | | | | | | | | | | |
|---|--------------|-----------|----------|-------|------------|---------|------|-------|--|--|--|
| RVPrs | ---- | Taube---- | -M/Min-- | ASPkt | -Benannte- | Gs/Prs- | Km-- | ASPkt | | | |
| 11 | 5140-20-65 | 1248.676 | 95,28 | | 5/2 | 488 | 176 | | | | |
| 15 | 5140-20-100 | 1245.403 | 93,40 | | 5/2 | 488 | 193 | | | | |
| 46 | 5470-20-577 | 1217.789 | 78,77 | | 5/2 | 488 | 167 | | | | |
| 47 | 5140-20-97 | 1217.716 | 78,30 | | 5/3 | 758 | 220 | | | | |
| 67 | 5470-20-578 | 1210.143 | 68,87 | | 5/2 | 488 | 157 | | | | |
| 68 | 5140-20-76 | 1210.071 | 68,40 | | 5/2 | 619 | 110 | | | | |
| 128 | 5140-20-94 | 1182.682 | 40,09 | | 5/2 | 619 | 96 | | | | |
| 129 | 5140-20-75 | 1182.477 | 39,62 | | 5/2 | 619 | 61 | | | | |
| 130 | 5569-20-1112 | 1182.409 | 39,15 | | 5/2 | 488 | 83 | | | | |
| 149 | 5470-20-544 | 1179.133 | 30,19 | V | 5/3 | 860 | 104 | | | | |
| 151 | 5470-20-570 | 1179.065 | 29,25 | V | 5/4 | 1035 | 123 | | | | |
| 152 | 5470-20-567 | 1177.977 | 28,77 | V | 5/3 | 860 | 170 | | | | |
| 162 | 5470-20-593 | 1174.524 | 24,06 | | 5/3 | 758 | 151 | | | | |
| 164 | 5140-20-96 | 1174.389 | 23,11 | | 5/3 | 765 | 137 | | | | |
| 165 | 5569-20-1192 | 1174.186 | 22,64 | | 5/3 | 860 | 72 | | | | |
| 180 | 5470-20-563 | 1168.344 | 15,57 | | 5/1 | 349 | 22 | | | | |
| 384F | 5140-20-68 | 1154.350 | 2,79 | | 5/3 | 663 | 125 | | | | |

| 06.005 Gubisch F,Chr.,Jonas * 341.434m * 38 / 11 = 28,9% * | | | | | | | | | | | |
|---|-------------|-----------|----------|-------|------------|---------|------|-------|--|--|--|
| RVPrs | ---- | Taube---- | -M/Min-- | ASPkt | -Benannte- | Gs/Prs- | Km-- | ASPkt | | | |
| 8 | 5470-20-627 | 1253.429 | 96,70 | | 5/3 | 729 | 222 | | | | |
| 48 | 5470-20-614 | 1217.451 | 77,83 | | 5/2 | 524 | 153 | | | | |
| 58 | 5470-20-624 | 1213.269 | 73,11 | | 5/2 | 619 | 88 | | | | |
| 76 | 5470-20-608 | 1206.481 | 64,62 | V | 5/4 | 933 | 203 | | | | |
| 138 | 5470-20-606 | 1180.615 | 35,38 | V | 5/2 | 590 | 127 | | | | |
| 154 | 5470-20-667 | 1176.412 | 27,83 | | 5/4 | 1035 | 149 | | | | |
| 192 | 5470-20-655 | 1163.186 | 9,91 | V | 5/5 | 1174 | 297 | | | | |
| 211 | 5470-20-631 | 1158.713 | 0,94 | V | 5/5 | 1174 | 230 | | | | |
| 363F | 5470-20-668 | 1158.516 | 8,12 | | 5/2 | 524 | 44 | | | | |
| 370F | 5470-20-654 | 1157.207 | 6,35 | | 5/2 | 619 | 26 | | | | |
| 371F | 5470-20-673 | 1157.142 | 6,09 | | 5/3 | 758 | 86 | | | | |

| 07.006 Blöchl Gerhard * 341.698m * 43 / 4 = 9,3% * | | | | | | | | | | | |
|---|-------------|-----------|----------|-------|------------|---------|------|-------|--|--|--|
| RVPrs | ---- | Taube---- | -M/Min-- | ASPkt | -Benannte- | Gs/Prs- | Km-- | ASPkt | | | |
| 50 | 6529-20-650 | 1216.151 | 76,89 | | 5/1 | 349 | 78 | | | | |
| 132 | 6529-20-662 | 1181.596 | 38,21 | | 5/3 | 663 | 142 | | | | |
| 199 | 6529-20-676 | 1161.645 | 6,60 | | 5/2 | 488 | 84 | | | | |
| 380F | 6529-20-653 | 1155.101 | 3,81 | | 5/3 | 765 | 129 | | | | |

| 08.001 Hellauer L. * 362.096m * 51 / 13 = 25,5% * | | | | | | | | | | | |
|--|-------------|-----------|----------|-------|------------|---------|------|-------|--|--|--|
| RVPrs | ---- | Taube---- | -M/Min-- | ASPkt | -Benannte- | Gs/Prs- | Km-- | ASPkt | | | |
| 17 | 7215-20-664 | 1241.898 | 92,45 | | 4/3 | 860 | 202 | | | | |
| 32 | 7215-20-659 | 1224.262 | 85,38 | | 4/4 | 999 | 206 | | | | |
| 45 | 7215-20-677 | 1217.880 | 79,25 | | 4/2 | 488 | 145 | | | | |
| 59 | 7215-20-712 | 1212.984 | 72,64 | | 4/2 | 488 | 100 | | | | |
| 70 | 7215-20-656 | 1208.800 | 67,45 | | 4/4 | 999 | 253 | | | | |
| 71 | 7215-20-667 | 1208.733 | 66,98 | | 4/1 | 349 | 69 | | | | |
| 126 | 7215-20-675 | 1183.191 | 41,04 | | 4/3 | 758 | 145 | | | | |
| 127 | 7215-20-702 | 1183.063 | 40,57 | | 4/2 | 488 | 54 | | | | |
| 147 | 7215-20-668 | 1179.722 | 31,13 | | 4/3 | 758 | 144 | | | | |
| 150 | 7215-20-711 | 1179.082 | 29,72</ | | | | | | | | |

ZÜCHTEREINZELNACHWEISE RV 652/04 Waldkirchen

09.012 Geier L.+D.+A.+Ella * 343.464m * 67 / 40 = 59,7% *

| RVPrs | ---- | Taube---- | -M/Min-- | ASPkt | -Benannte- | Gs/Prs- | Km-- | ASPkt |
|-------|--------------|-----------|----------|-------|------------|---------|------|-------|
| 49 | 7515-20-1196 | 1216.807 | 77,36 | 5/ 2 | 590 | 178 | | |
| 51 | 7515-20-1171 | 1216.017 | 76,42 | 5/ 4 | 1035 | 240 | | |
| 61 | NL20-1094667 | 1211.656 | 71,70 | 4/ 2 | 619 | 150 | | |
| 62 | 7515-20-1183 | 1211.442 | 71,23 | 5/ 3 | 765 | 262 | | |
| 72 | 7515-20-1204 | 1207.609 | 66,51 | 5/ 5 | 1174 | 326 | | |
| 73 | 7515-20-1165 | 1207.396 | 66,04 V | 5/ 5 | 1174 | 440 | CD | |
| 74 | 7515-20-1202 | 1207.326 | 65,57 | 5/ 5 | 1174 | 433 | | |
| 75 | 7515-20-1180 | 1207.113 | 65,09 | 5/ 4 | 999 | 239 | | |
| 92 | 6529-20- 511 | 1197.712 | 57,08 V | 5/ 5 | 1174 | 436 | CD | |
| 95 | 7515-20-1161 | 1196.183 | 55,66 | 5/ 4 | 904 | 300 | | |
| 98 | 7515-20-1188 | 1192.859 | 54,25 V | 5/ 5 | 1174 | 415 | | |
| 101 | NL20-1094671 | 1192.514 | 52,83 | 5/ 4 | 904 | 311 | | |
| 115 | 7515-20-1189 | 1188.457 | 46,23 | 5/ 5 | 1174 | 329 | | |
| 116 | 7515-20-1168 | 1187.430 | 45,75 | 5/ 4 | 999 | 297 | | |
| 118 | 2238-20- 245 | 1187.156 | 44,81 | 5/ 5 | 1174 | 372 | | |
| 119 | 7515-20-1173 | 1186.746 | 44,34 | 5/ 3 | 860 | 222 | | |
| 135 | 7515-20-1239 | 1180.762 | 36,79 | 5/ 4 | 933 | 261 | | |
| 135 | NL20-1094679 | 1180.762 | 36,79 | 5/ 3 | 794 | 179 | | |
| 142 | 7515-20-1182 | 1180.491 | 33,49 | 5/ 3 | 663 | 215 | | |
| 144 | 7515-20-1214 | 1180.289 | 32,55 | 5/ 2 | 524 | 132 | | |
| 146 | 7515-20-1212 | 1180.221 | 31,60 | 5/ 2 | 619 | 87 | | |
| 148 | 7515-20-1221 | 1179.343 | 30,66 | 5/ 5 | 1174 | 326 | | |
| 157 | NL20-1094668 | 1175.173 | 26,42 | 5/ 4 | 933 | 271 | | |
| 187 | 7515-20-1236 | 1165.668 | 12,26 | 5/ 2 | 488 | 98 | | |
| 189 | 7515-20-1186 | 1165.404 | 11,32 | 5/ 5 | 1174 | 373 | | |
| 193 | 8951-20- 334 | 1162.708 | 9,43 | 5/ 1 | 349 | 15 | | |
| 204 | 6529-20- 527 | 1160.351 | 4,25 | 5/ 5 | 1174 | 289 | | |
| 206 | 7515-20-1253 | 1160.155 | 3,30 | 5/ 4 | 999 | 190 | | |
| 209 | 7515-20-1211 | 1158.916 | 1,89 | 5/ 4 | 933 | 211 | | |
| 365F | 7515-20-1166 | 1158.329 | 7,61 V | 5/ 5 | 1174 | 373 | D | |
| 367F | 7515-20-1194 | 1158.199 | 7,11 | 5/ 2 | 524 | 103 | | |

25.001 Denk Josef * 350.159m * 20 / 2 = 10,0% *

| RVPrs | ---- | Taube---- | -M/Min-- | ASPkt | -Benannte- | Gs/Prs- | Km-- | ASPkt |
|-------|--------------|-----------|----------|-------|------------|---------|------|-------|
| 205 | 7074-20- 782 | 1160.235 | 3,77 | 5/ 1 | 349 | 11 | | |
| 393F | 7074-20- 788 | 1152.218 | 0,51 | 5/ 1 | 349 | 0 | | |

25.002 Schönberger Josef * 348.312m * 45 / 26 = 57,8% *

| RVPrs | ---- | Taube---- | -M/Min-- | ASPkt | -Benannte- | Gs/Prs- | Km-- | ASPkt |
|-------|--------------|-----------|----------|-------|------------|---------|------|-------|
| 18 | 7074-20- 862 | 1240.869 | 91,98 | 5/ 3 | 663 | 260 | | |
| 24 | 7074-20- 747 | 1233.909 | 89,15 | 5/ 2 | 590 | 95 | | |
| 42 | 7074-20- 750 | 1218.442 | 80,66 | 5/ 3 | 794 | 185 | | |
| 53 | 7074-20- 728 | 1215.113 | 75,47 | 5/ 2 | 488 | 115 | | |
| 65 | 7074-20- 725 | 1210.678 | 69,81 | 5/ 3 | 758 | 182 | | |
| 66 | 7074-20- 758 | 1210.608 | 69,34 | 5/ 5 | 1174 | 250 | | |
| 79 | 7074-20- 709 | 1205.162 | 63,21 | 5/ 3 | 860 | 196 | | |
| 80 | 7074-20- 718 | 1205.023 | 62,74 | 5/ 2 | 488 | 119 | | |
| 81 | 7074-20- 732 | 1204.954 | 62,26 | 5/ 5 | 1174 | 252 | | |
| 88 | 7074-20- 757 | 1200.110 | 58,96 | 5/ 5 | 1174 | 312 | | |
| 93 | 7074-20- 708 | 1197.566 | 56,60 | 5/ 5 | 1174 | 183 | | |
| 107 | 7074-20- 743 | 1191.353 | 50,00 | 5/ 2 | 619 | 54 | | |
| 109 | 7074-20- 715 | 1189.319 | 49,06 | 5/ 2 | 488 | 64 | | |
| 120 | 7074-20- 746 | 1185.945 | 43,87 | 5/ 2 | 590 | 50 | | |
| 137 | 7074-20- 754 | 1180.719 | 35,85 | 5/ 4 | 1035 | 131 | | |
| 139 | 7074-20- 717 | 1180.585 | 34,91 | 5/ 2 | 619 | 52 | | |
| 166 | 7074-20- 713 | 1173.624 | 22,17 | 5/ 3 | 729 | 148 | | |
| 168 | 7074-20- 753 | 1173.229 | 21,23 | 5/ 3 | 794 | 73 | | |
| 169 | 7074-20- 740 | 1173.097 | 20,75 | 5/ 3 | 663 | 65 | | |
| 188 | 7074-20- 706 | 1165.638 | 11,79 | 5/ 3 | 663 | 131 | | |
| 201 | 7074-20- 755 | 1161.427 | 5,66 | 5/ 4 | 1035 | 181 | | |
| 202 | 7074-20- 736 | 1161.363 | 5,19 | 5/ 2 | 590 | 47 | | |
| 203 | 7074-20- 741 | 1161.298 | 4,72 | 5/ 4 | 999 | 108 | | |
| 377F | 7074-20- 731 | 1155.264 | 4,57 | 5/ 3 | 794 | 89 | | |
| 382F | 7074-20- 710 | 1154.881 | 3,30 | 5/ 3 | 729 | 76 | | |
| 388F | 7074-20- 703 | 1153.924 | 1,78 | 5/ 2 | 590 | 50 | | |

26.003 Simmel Paul.M.u.S. * 349.998m * 29 / 13 = 44,8% *

| RVPrs | ---- | Taube---- | -M/Min-- | ASPkt | -Benannte- | Gs/Prs- | Km-- | ASPkt |
|-------|--------------|-----------|----------|-------|------------|---------|------|-------|
| 7 | 7075-20- 129 | 1253.799 | 97,17 | 5/ 5 | 1174 | 363 | | |
| 35 | 7075-20- 134 | 1220.781 | 83,96 | 5/ 4 | 904 | 185 | | |
| 54 | 7075-20- 130 | 1214.568 | 75,00 | 5/ 3 | 794 | 217 | | |
| 55 | 7075-20- 116 | 1214.217 | 74,53 | 5/ 2 | 524 | 99 | | |
| 96 | 7075-20- 104 | 1194.464 | 55,19 | 5/ 2 | 619 | 106 | | |
| 97 | 7075-20- 112 | 1193.921 | 54,72 | 5/ 2 | 619 | 130 | | |
| 145 | 7075-20- 109 | 1180.233 | 32,08 | 5/ 2 | 590 | 39 | | |
| 179 | 7075-20- 132 | 1169.258 | 16,04 | 5/ 3 | 758 | 162 | | |
| 183 | 7075-20- 118 | 1167.438 | 14,15 | 5/ 1 | 349 | 21 | | |
| 197 | 7075-20- 103 | 1161.883 | 7,55 | 5/ 2 | 524 | 26 | | |
| 200 | 7075-20- 128 | 1161.562 | 6,13 | 5/ 4 | 933 | 155 | | |
| 212 | 7075-20- 106 | 1158.550 | 0,47 | 5/ 3 | 765 | 50 | | |
| 394F | 7075-20- 120 | 1152.004 | 0,25 | 5/ 1 | 349 | 0 | | |

ZÜCHTEREINZELNACHWEISE RV 652/04 Waldkirchen

26.006 SG Siglmüller * 343.320m * 55 / 23 = 41,8% *

| RVPrs | ---- | Taube---- | -M/Min-- | ASPkt | -Benannte- | Gs/Prs- | Km-- | ASPkt |
|-------|--------------|-----------|----------|-------|------------|---------|------|-------|
| 10 | 7075-20- 307 | 1248.966 | 95,75 | 5/ 3 | 765 | 176 | | |
| 23 | 7075-20- 311 | 1234.890 | 89,62 | 5/ 3 | 663 | 123 | | |
| 34 | 7040-20- 250 | 1221.128 | 84,43 V | 5/ 4 | 1035 | 138 | | |
| 36 | 7075-20- 322 | 1220.549 | 83,49 | 5/ 3 | 663 | 211 | | |
| 63 | 0941-20- 52 | 1211.005 | 70,75 | 5/ 2 | 488 | 154 | | |
| 64 | 7075-20- 349 | 1210.934 | 70,28 | 5/ 3 | 794 | 75 | | |
| 69 | 0941-20- 19 | 1208.873 | 67,92 | 5/ 3 | 758 | 191 | | |
| 94 | 7075-20- 356 | 1196.376 | 56,13 | 5/ 2 | 619 | 61 | | |
| 100 | 7075-20- 333 | 1192.566 | 53,30 | 5/ 1 | 349 | 53 | | |
| 134 | 7075-20- 136 | 1181.282 | 37,26 V | 5/ 4 | 933 | 229 | | |
| 155 | 7075-20- 335 | 1175.485 | 27,36 | 5/ 3 | 663 | 99 | | |
| 156 | 7075-20- 358 | 1175.351 | 26,89 | 5/ 1 | 349 | 31 | | |
| 161 | 7075-20- 310 | 1174.614 | 24,53 V | 5/ 5 | 1174 | 189 | | |
| 163 | 7040-20- 256 | 1174.480 | 23,58 | 5/ 2 | 488 | 65 | | |
| 170 | 7075-20- 365 | 1173.075 | 20,28 | 5/ 2 | 590 | 60 | | |
| 171 | 7075-20- 345 | 1172.074 | 19,81 | 5/ 1 | 349 | 26 | | |
| 174 | 7075-20- 323 | 1171.607 | 18,40 | 5/ 1 | 349 | 25 | | |
| 175 | 7075-20- 318 | 1171.474 | 17,92 | 5/ 3 | 663 | 146 | | |
| 181 | 7075-20- 312 | 1167.689 | 15,09 | 5/ 3 | 765 | 52 | | |
| 184 | 7075-20- 360 | 1167.093 | 13,68 | 5/ 1 | 349 | 21 | | |
| 194 | 7075-20- 328 | 1162.090 | 8,96 | 5/ 2 | 488 | 46 | | |
| 195 | 5470-20- 640 | 1161.958 | 8,49 | 5/ 2 | 590 | 68 | | |
| 208 | 5470-20- 646 | 1159.277 | 2,36 | 5/ 2 | 524 | 58 | | |

27.001 SG Kern&Liebl Sandra * 348.106m * 43 / 10 = 23,3% *

| RVPrs | ---- | Taube---- | -M/Min-- | ASPkt | -Benannte- | Gs/Prs- | Km-- | ASPkt |
|-------|--------------|-----------|----------|-------|------------|---------|------|-------|
| 39 | 7040-20- 258 | 1219.499 | 82,08 | 5/ 2 | 590 | 142 | | |
| 41 | 7040-20- 221 | 1218.859 | 81,13 | 5/ 3 | 860 | 241 | | |
| 102 | 7040-20- 205 | 1192.484 | 52,36 V | 5/ 4 | 999 | 195 | | |
| 103 | 7040-20- 249 | 1192.416 | 51,89 V | 5/ 4 | 999 | 273 | | |
| 171 | 7040-20- 232 | 1172.074 | 19,81 | 5/ 1 | 349 | 26 | | |
| 173 | 7040-20- 223 | 1171.877 | 18,87 V | 5/ 5 | 1174 | 236 | | |
| 190 | 7040-20- 230 | 1164.818 | 10,85 V | 5/ 4 | 1035 | 206 | | |
| 191 | 7040-20- 214 | 1164.559 | 10,38 | 5/ 2 | 619 | 31 | | |
| 386F | 4503-20- 69 | 1154.198 | 2,28 | 5/ 4 | 933 | 103 | | |
| 386F | 7040-20- 204 | 1154.198 | 2,28 | 5/ 4 | 999 | 160 | | |

27.003 Freund Heinrich * 346.222m * 78 / 31 = 39,7% *

| RVPrs | ---- | Taube---- | -M/Min-- | ASPkt | -Benannte- | Gs/Prs- | Km-- | ASPkt |
|-------|--------------|-----------|----------|-------|------------|---------|------|-------|
| 16 | 7040-20- 166 | 1242.349 | 92,92 | 5/ 3 | 794 | 217 | | |
| 22 | 5294-20-1102 | 1235.331 | 90,09 | 5/ 1 | 349 | 90 | | |
| 25 | 7040-20- 130 | 1233.497 | 88,68 | 5/ 2 | 590 | 151 | | |
| 29 | 7040-20- 152 | 1228.173 | 86,79 | 5/ 5 | 1174 | 196 | | |
| 37 | 7216-20- 264 | 1220.166 | 83,02 | 5/ 2 | 590 | 137 | | |
| 38 | 7040-20- 156 | 1220.022 | 82,55 | 5/ 5 | 1174 | 230 | | |
| 60 | 7040-20- 151 | 1211.908 | 72,17 | 5/ 5 | 1174 | 262 | | |
| 78 | 7040-20- 180 | 1205.368 | 63,68 | 5/ 5 | 1174 | 289 | | |
| 82 | 7040-20- 123 | 1204.111 | 61,79 | 5/ 3 | 860 | 174 | | |
| 87 | 7040-20- 113 | 1200.215 | 59,43 | 5/ 3 | 758 | 213 | | |
| 89 | 7040-20- 183 | 1199.106 | 58,49 | 5/ 3 | 729 | 167 | | |
| 99 | 7040-20- 172 | 1192.772 | 53,77 | 5/ 2 | 488 | 122 | | |
| 106 | 7040-20- 153 | 1191.404 | 50,47 | 5/ 3 | 758 | 125 | | |
| 112 | 7040-20- 128 | 1188.813 | 47,64 | 5/ 4 | 933 | 134 | | |
| 113 | 7040-20- 111 | 1188.745 | 47,17 | 5/ 3 | 765 | 165 | | |
| 121 | 7040-20- 107 | 1185.895 | 43,40 | 5/ 3 | 765 | 134 | | |
| 123 | 7040-20- 116 | 1185.692 | 42,45 | 5/ 2 | 590 | 51 | | |
| 124 | 7040-20- 178 | 1185.151 | 41,98 | 5/ 2 | 524 | 112 | | |
| 125 | 7040-20- 121 | 1184.407 | 41,51 | 5/ 4 | 1035 | 274 | | |
| 140 | 7040-20- 132 | 1180.571 | 34,43 | 5/ 4 | 1035 | 187 | | |
| 158 | 7040-20- 149 | 1174.962 | 25,94 | 5/ 3 | | | | |

ZÜCHTER-ZUSAMMENSTELLUNG RV 652/02 Passau

| VE.ZNR | ZÜCHTERNAME | ENTFERNUNG | GESETZTE TAUBEN | | | | | PREISE | % | ERST./LETZT. | -105- | | | | | | | |
|---------------------------------|----------------------|------------|-----------------|----|----|-----|-----|-----------------------|----|--------------|-------|------|------|------|-------|------|------|-----|
| | | | GSMT | AM | AW | Jäm | Jäw | | | | RE | RG | FG | RV | PREIS | RANG | PRS | PKT |
| 01.001 | Hazoth Hermann | 359.993 | 63 | | | | | 16 | 13 | 15 | 16 | 25,4 | 80 | 1469 | 6. | 16 | 644 | |
| 02.002 | Allmannsberger/Kainz | 347.217 | 40 | | | | | 17 | 15 | 15 | 17 | 42,5 | 33 | 1558 | 2. | 16 | 1126 | |
| 04.001 | SG Pils1 / Tschache | 355.090 | 39 | | | | | 14 | 10 | 10 | 13 | 35,9 | 45 | 1606 | 10. | 13 | 601 | |
| 07.002 | Thoma Jakob | 341.920 | 38 | | | | | 20 | 16 | 17 | 19 | 52,6 | 397 | 1612 | 3. | 16 | 1068 | |
| 09.015 | Rametsteiner H.&E. | 367.965 | 45 | | | | | 4 | 3 | 3 | 4 | 8,9 | 964 | 1538 | 16. | 5 | 207 | |
| 13.006 | Krenn M. u. F. | 345.650 | 37 | | | | | 15 | 14 | 14 | 15 | 40,5 | 95 | 1514 | 9. | 14 | 947 | |
| 13.007 | Schwarz Sandro | 351.747 | 56 | | | | | 9 | 5 | 6 | 9 | 16,1 | 262 | 1581 | 5. | 16 | 938 | |
| 13.009 | Schwarz Kurt | 349.468 | 32 | | | | | 15 | 15 | 15 | 15 | 46,9 | 165 | 1279 | 7. | 15 | 986 | |
| 13.011 | Zirngibl Rainer | 340.974 | 35 | | | | | 1 | | | 1 | 2,9 | 1478 | 1478 | 12. | 8 | 382 | |
| 14.001 | SG Büttner | 342.298 | 52 | | | | | 23 | 23 | 23 | 23 | 44,2 | 5 | 1392 | 4. | 16 | 1051 | |
| 14.005 | SG Dillinger/Kusser | 338.974 | 110 | | | | | 52 | 45 | 45 | 51 | 47,3 | 139 | 1616 | 1. | 16 | 1244 | |
| ----- Gsmt: Zü.: 11 ----- Tbn.: | | | 547 | | | | | -----RE-RG-FG-RV----- | | | | | | | | | | |

ZÜCHTER-ZUSAMMENSTELLUNG RV 652/04 Waldkirchen

| VE.ZNR | ZÜCHTERNAME | ENTFERNUNG | GESETZTE TAUBEN | | | | | PREISE | % | ERST./LETZT. | -105- | | | | | | | |
|---------------------------------|-----------------------|------------|-----------------|----|----|-----|-----|-----------------------|----|--------------|-------|------|------|------|-------|------|------|----|
| | | | GSMT | AM | AW | Jäm | Jäw | | | | RE | RG | FG | RV | PREIS | RANG | PRS | KM |
| 05.007 | SG Gründinger | 345.604 | 53 | | | | | 31 | 27 | 27 | 27 | 58,5 | 39 | 1610 | 2. | 25 | 5870 | |
| 06.003 | SG Weber/Simet | 340.514 | 69 | | | | | 18 | 16 | 17 | 16 | 26,1 | 107 | 1458 | 11. | 16 | 4380 | |
| 06.005 | Gubisch F.,Chr.,Jonas | 341.434 | 38 | | | | | 13 | 11 | 11 | 8 | 34,2 | 86 | 1595 | 5. | 22 | 5249 | |
| 07.006 | Blöchl Gerhard | 341.698 | 43 | | | | | 6 | 4 | 4 | 3 | 14,0 | 380 | 1576 | 12. | 16 | 3878 | |
| 08.001 | Hellauer L. | 362.096 | 51 | | | | | 14 | 12 | 13 | 12 | 27,5 | 138 | 1563 | 9. | 19 | 4856 | |
| 08.002 | Schauberger M. | 361.025 | 43 | | | | | 14 | 14 | 14 | 12 | 32,6 | 1 | 1405 | 8. | 21 | 5104 | |
| 09.012 | Geier L.+D.+A.+Ella | 343.464 | 67 | | | | | 42 | 40 | 40 | 38 | 62,7 | 60 | 1582 | 1. | 25 | 5870 | |
| 25.001 | Denk Josef | 350.159 | 20 | | | | | 3 | 1 | 2 | 1 | 15,0 | 1302 | 1480 | 15. | 13 | 2532 | |
| 25.002 | Schönberger Josef | 348.312 | 45 | | | | | 27 | 25 | 26 | 23 | 60,0 | 143 | 1568 | 4. | 24 | 5731 | |
| 26.003 | Simmel Paul.M.u.S. | 349.998 | 29 | | | | | 15 | 12 | 13 | 12 | 51,7 | 81 | 1482 | 10. | 19 | 4570 | |
| 26.006 | SG Siglmüller | 343.320 | 55 | | | | | 27 | 23 | 23 | 23 | 49,1 | 106 | 1633 | 7. | 21 | 5110 | |
| 27.001 | SG Kern&Liebl Sandra | 348.106 | 43 | | | | | 12 | 8 | 10 | 8 | 27,9 | 327 | 1627 | 6. | 21 | 5206 | |
| 27.003 | Freund Heinrich | 346.222 | 78 | | | | | 34 | 31 | 31 | 29 | 43,6 | 134 | 1614 | 3. | 24 | 5731 | |
| ----- Gsmt: Zü.: 13 ----- Tbn.: | | | 634 | | | | | -----RE-RG-FG-RV----- | | | | | | | | | | |

MS-BEZ.: **FLUGGRUPPEN JUNGTAUBENMEISTER**
 MS-ART : **05 BESTE TAUBEN**
 MS-MOD.: HAT-HAT PUNKTSYSTEM= AS-PKT

MS.NR.:1163-072 (652/02-Pas)-V5

MS-FLG.: **35 36 37 38 39**
 ** ** ** **

| RANG | NAME | RG | RV | VV | ZZZ | MSCH | M | W | PRS | PUNKTE | KM | |
|------|----------------------|--------|--------|----|-----|------|----|---|---------|--------|--------|--|
| 1. | Geier L.+D.+A.+Ella | 652.04 | 09.012 | 01 | 5 | 0 | 25 | | 2210,19 | 5870 | Wal-04 | |
| 2. | SG Gründinger | 652.04 | 05.007 | 01 | 5 | 0 | 25 | | 1914,44 | 5870 | Wal-04 | |
| 3. | SG Dillinger/Kusser | 652.02 | 14.005 | 01 | 5 | 0 | 25 | | 1531,27 | 5940 | Pas-02 | |
| 4. | Schönberger Josef | 652.04 | 25.002 | 01 | 5 | 0 | 24 | | 1267,67 | 5521 | Wal-04 | |
| 5. | Freund Heinrich | 652.04 | 27.003 | 01 | 5 | 0 | 24 | | 1262,27 | 5521 | Wal-04 | |
| 6. | Allmannsberger/Kainz | 652.02 | 02.002 | 01 | 5 | 0 | 23 | | 1425,93 | 5446 | Pas-02 | |
| 7. | SG Büttner | 652.02 | 14.001 | 01 | 5 | 0 | 22 | | 1445,23 | 5072 | Pas-02 | |
| 8. | Schwarz Sandro | 652.02 | 13.007 | 01 | 5 | 0 | 22 | | 1236,50 | 5058 | Pas-02 | |
| 9. | Gubisch F,Chr.,Jonas | 652.04 | 06.005 | 01 | 5 | 0 | 22 | | 1137,83 | 5249 | Wal-04 | |
| 10. | Krenn M. u. F. | 652.02 | 13.006 | 01 | 5 | 0 | 22 | | 1056,35 | 5121 | Pas-02 | |
| 11. | Thoma Jakob | 652.02 | 07.002 | 01 | 5 | 0 | 21 | | 1338,45 | 5241 | Pas-02 | |
| 12. | Schauberger M. | 652.04 | 08.002 | 01 | 5 | 0 | 21 | | 1271,85 | 5104 | Wal-04 | |
| 13. | Schwarz Kurt | 652.02 | 13.009 | 01 | 5 | 0 | 21 | | 1178,86 | 4878 | Pas-02 | |
| 14. | SG Kern&Liebl Sandra | 652.04 | 27.001 | 01 | 5 | 0 | 21 | | 1177,34 | 5032 | Wal-04 | |
| 15. | SG Siglmüller | 652.04 | 26.006 | 01 | 5 | 0 | 21 | | 1061,43 | 4979 | Wal-04 | |
| 16. | Hazoth Hermann | 652.02 | 01.001 | 01 | 5 | 0 | 20 | | 1017,02 | 4643 | Pas-02 | |
| 17. | Schätzl Herbert | 652.02 | 14.003 | 01 | 5 | 0 | 19 | | 1226,05 | 3907 | Pas-02 | |
| 18. | Simmel Paul.M.u.S. | 652.04 | 26.003 | 01 | 5 | 0 | 19 | | 1102,57 | 4389 | Wal-04 | |
| 19. | Hellauer L. | 652.04 | 08.001 | 01 | 5 | 0 | 19 | | 985,68 | 4856 | Wal-04 | |
| 20. | SG Pils1 / Tschache | 652.02 | 04.001 | 01 | 5 | 0 | 18 | | 748,33 | 4600 | Pas-02 | |
| 21. | SG Weber/Simet | 652.04 | 06.003 | 01 | 5 | 0 | 16 | | 893,32 | 3821 | Wal-04 | |
| 22. | Bretl J. u. Frau | 652.04 | 14.004 | 01 | 5 | 0 | 16 | | 736,38 | 3300 | Wal-04 | |
| 23. | Blöchl Gerhard | 652.04 | 07.006 | 01 | 5 | 0 | 16 | | 662,01 | 3878 | Wal-04 | |
| 24. | Hutterer A.u.M. | 652.04 | 26.001 | 01 | 5 | 0 | 13 | | 536,62 | 2351 | Wal-04 | |
| 25. | Denk Josef | 652.04 | 25.001 | 01 | 5 | 0 | 13 | | 397,08 | 2532 | Wal-04 | |
| 26. | Blöchl F/F/Annalena | 652.04 | 07.004 | 01 | 5 | 0 | 12 | | 536,03 | 2672 | Wal-04 | |
| 27. | Leuchtner A. | 652.04 | 02.005 | 01 | 5 | 0 | 11 | | 708,97 | 1840 | Wal-04 | |
| 28. | Anetzberger Willi | 652.04 | 17.001 | 01 | 5 | 0 | 11 | | 454,90 | 1979 | Wal-04 | |
| 29. | Kriegner Gerhard | 652.02 | 13.008 | 01 | 5 | 0 | 10 | | 701,59 | 1600 | Pas-02 | |
| 30. | Zirngibl Rainer | 652.02 | 13.011 | 01 | 5 | 0 | 10 | | 487,47 | 1774 | Pas-02 | |
| 31. | Nimon Kadaj | 652.02 | 04.002 | 01 | 5 | 0 | 10 | | 404,06 | 1932 | Pas-02 | |
| 32. | Hoffmann Joh.u.Wolfg | 652.04 | 25.005 | 01 | 5 | 0 | 10 | | 285,33 | 1672 | Wal-04 | |
| 33. | Brunner Jo. & Marlon | 652.02 | 06.003 | 01 | 5 | 0 | 8 | | 440,91 | 1898 | Pas-02 | |
| 34. | Schießl Konrad | 652.04 | 05.006 | 01 | 5 | 0 | 8 | | 428,61 | 1460 | Wal-04 | |
| 35. | Reitberger A | 652.02 | 03.004 | 01 | 5 | 0 | 8 | | 309,45 | 1280 | Pas-02 | |
| 36. | Rametsteiner H.&E. | 652.02 | 09.015 | 01 | 5 | 0 | 8 | | 281,19 | 2105 | Pas-02 | |
| 37. | Penzenstadler H.u.S. | 652.04 | 14.005 | 01 | 5 | 0 | 7 | | 467,49 | 1176 | Wal-04 | |
| 38. | Mader A/Lenz Robin | 652.04 | 04.001 | 01 | 5 | 0 | 6 | | 342,72 | 906 | Wal-04 | |
| 39. | Bichlmeier Fr.&Fra. | 652.04 | 04.006 | 01 | 5 | 0 | 5 | | 360,38 | 875 | Wal-04 | |
| 40. | Penzenstadler Mich. | 652.04 | 26.004 | 01 | 5 | 0 | 5 | | 166,99 | 731 | Wal-04 | |
| 41. | Moser A./Cedr./Flor. | 652.02 | 11.001 | 01 | 2 | 0 | 3 | | 114,11 | 498 | Pas-02 | |

MS-BEZ.: FLUGGRUPPEN JUNGTAUBENMEISTER MS.NR.:1163-072 (652/02-Pas)-V5
MS-ART: BESTGEREISTE MAENNCHEN
MS-MOD.: HAT-HAT PUNKTSYSTEM= AS-PKT

MS-FLG.: 35 36 37 38 39
** **

| RANG | NAME | RG | RV | VV | ZZZ | RINGNR. | PR | PUNKTE | KM |
|------|----------------------|--------|--------|--------------|-----|---------|----|--------|------|
| 1. | Geier L.+D.+A.+Ella | 652.04 | 09.012 | 7515-20-1181 | | | 5 | 478,30 | 1174 |
| 2. | Geier L.+D.+A.+Ella | 652.04 | 09.012 | 7515-20-1165 | | | 5 | 441,27 | 1174 |
| 3. | Geier L.+D.+A.+Ella | 652.04 | 09.012 | 6529-20- 511 | | | 5 | 439,24 | 1174 |
| 4. | SG Gründinger | 652.04 | 05.007 | 7569-20- 222 | | | 5 | 437,04 | 1174 |
| 5. | Geier L.+D.+A.+Ella | 652.04 | 09.012 | 7515-20-1202 | | | 5 | 434,89 | 1174 |
| 6. | SG Büttner | 652.02 | 14.001 | 0454-20- 40 | | | 5 | 419,23 | 1188 |
| 7. | Geier L.+D.+A.+Ella | 652.04 | 09.012 | 7515-20-1188 | | | 5 | 416,49 | 1174 |
| 8. | Geier L.+D.+A.+Ella | 652.04 | 09.012 | 7515-20-1203 | | | 5 | 404,07 | 1174 |
| 9. | SG Gründinger | 652.04 | 05.007 | 7569-20- 251 | | | 5 | 397,45 | 1174 |
| 10. | Geier L.+D.+A.+Ella | 652.04 | 09.012 | 7515-20-1166 | | | 5 | 382,95 | 1174 |
| 11. | Geier L.+D.+A.+Ella | 652.04 | 09.012 | 7515-20-1186 | | | 5 | 379,51 | 1174 |
| 12. | Geier L.+D.+A.+Ella | 652.04 | 09.012 | 2238-20- 245 | | | 5 | 375,63 | 1174 |
| 13. | SG Gründinger | 652.04 | 05.007 | 7569-20- 206 | | | 5 | 369,05 | 1174 |
| 14. | Simmel Paul.M.u.S. | 652.04 | 26.003 | 7075-20- 129 | | | 5 | 363,23 | 1174 |
| 15. | Geier L.+D.+A.+Ella | 652.04 | 09.012 | 7515-20-1187 | | | 5 | 361,77 | 1174 |
| 16. | SG Gründinger | 652.04 | 05.007 | 7569-20- 213 | | | 5 | 360,53 | 1174 |
| 17. | Allmannsberger/Kainz | 652.02 | 02.002 | 5007-20- 332 | | | 5 | 356,40 | 1188 |
| 18. | SG Gründinger | 652.04 | 05.007 | 7569-20- 218 | | | 5 | 350,37 | 1174 |
| 19. | SG Gründinger | 652.04 | 05.007 | 7569-20- 269 | | | 5 | 349,58 | 1174 |
| 20. | Schwarz Sandro | 652.02 | 13.007 | 6883-20- 24 | | | 5 | 341,39 | 1188 |
| 21. | Schwarz Kurt | 652.02 | 13.009 | 0454-20- 72 | | | 5 | 334,66 | 1188 |
| 22. | Geier L.+D.+A.+Ella | 652.04 | 09.012 | 7515-20-1189 | | | 5 | 333,75 | 1174 |
| 23. | Geier L.+D.+A.+Ella | 652.04 | 09.012 | 7515-20-1221 | | | 5 | 332,07 | 1174 |
| 24. | Geier L.+D.+A.+Ella | 652.04 | 09.012 | 7515-20-1204 | | | 5 | 327,93 | 1174 |
| 25. | SG Gründinger | 652.04 | 05.007 | 7569-20- 272 | | | 5 | 327,60 | 1174 |
| 26. | SG Dillinger/Kusser | 652.02 | 14.005 | 0454-20- 198 | | | 5 | 325,44 | 1188 |
| 27. | Schönberger Josef | 652.04 | 25.002 | 7074-20- 757 | | | 5 | 315,51 | 1174 |
| 28. | SG Dillinger/Kusser | 652.02 | 14.005 | 0454-20- 138 | | | 5 | 313,56 | 1188 |
| 29. | SG Dillinger/Kusser | 652.02 | 14.005 | 0454-20- 157 | | | 5 | 309,86 | 1188 |
| 30. | Allmannsberger/Kainz | 652.02 | 02.002 | 5007-20- 285 | | | 5 | 306,85 | 1188 |
| 31. | Krenn M. u. F. | 652.02 | 13.006 | 6883-20- 277 | | | 5 | 305,09 | 1188 |
| 32. | Gubisch F,Chr.,Jonas | 652.04 | 06.005 | 5470-20- 655 | | | 5 | 303,79 | 1174 |
| 33. | SG Büttner | 652.02 | 14.001 | 0454-20- 58 | | | 5 | 303,59 | 1188 |
| 34. | Allmannsberger/Kainz | 652.02 | 02.002 | 5007-20- 318 | | | 5 | 302,05 | 1188 |
| 35. | SG Dillinger/Kusser | 652.02 | 14.005 | 5138-20-3665 | | | 5 | 299,30 | 1188 |
| 36. | Geier L.+D.+A.+Ella | 652.04 | 09.012 | 6529-20- 527 | | | 5 | 297,91 | 1174 |
| 37. | SG Gründinger | 652.04 | 05.007 | 7569-20- 217 | | | 5 | 296,42 | 1174 |
| 38. | Freund Heinrich | 652.04 | 27.003 | 7040-20- 180 | | | 5 | 290,73 | 1174 |
| 39. | SG Dillinger/Kusser | 652.02 | 14.005 | 0454-20- 204 | | | 5 | 283,11 | 1188 |
| 40. | SG Siglmüller | 652.04 | 26.006 | 7075-20- 340 | | | 5 | 282,62 | 1174 |
| 41. | Freund Heinrich | 652.04 | 27.003 | 7040-20- 151 | | | 5 | 264,02 | 1174 |
| 42. | Schönberger Josef | 652.04 | 25.002 | 7074-20- 732 | | | 5 | 254,53 | 1174 |
| 43. | Schönberger Josef | 652.04 | 25.002 | 7074-20- 758 | | | 5 | 252,61 | 1174 |
| 44. | Schauberger M. | 652.04 | 08.002 | 7215-20- 616 | | | 5 | 249,05 | 1174 |
| 45. | Thoma Jakob | 652.02 | 07.002 | 5496-20- 3 | | | 5 | 243,31 | 1188 |
| 46. | SG Kern&Liebl Sandra | 652.04 | 27.001 | 7040-20- 223 | | | 5 | 242,16 | 1174 |
| 47. | Gubisch F,Chr.,Jonas | 652.04 | 06.005 | 5470-20- 631 | | | 5 | 240,14 | 1174 |
| 48. | Freund Heinrich | 652.04 | 27.003 | 7040-20- 156 | | | 5 | 230,00 | 1174 |
| 49. | SG Dillinger/Kusser | 652.02 | 14.005 | 5138-20-3630 | | | 5 | 228,44 | 1188 |
| 50. | Krenn M. u. F. | 652.02 | 13.006 | 7075-20- 30 | | | 5 | 202,58 | 1188 |
| 51. | Freund Heinrich | 652.04 | 27.003 | 7040-20- 152 | | | 5 | 196,53 | 1174 |
| 52. | SG Siglmüller | 652.04 | 26.006 | 7075-20- 310 | | | 5 | 194,16 | 1174 |
| 53. | Schönberger Josef | 652.04 | 25.002 | 7074-20- 708 | | | 5 | 186,66 | 1174 |
| 54. | Schwarz Sandro | 652.02 | 13.007 | 6883-20- 33 | | | 5 | 155,59 | 1188 |
| 55. | Schauberger M. | 652.04 | 08.002 | 7215-20- 622 | | | 4 | 383,44 | 999 |
| 56. | SG Gründinger | 652.04 | 05.007 | 7569-20- 221 | | | 4 | 369,28 | 904 |
| 57. | Geier L.+D.+A.+Ella | 652.04 | 09.012 | 7515-20-1170 | | | 4 | 364,61 | 1035 |
| 58. | SG Gründinger | 652.04 | 05.007 | 7569-20- 280 | | | 4 | 364,04 | 825 |
| 59. | Geier L.+D.+A.+Ella | 652.04 | 09.012 | NL20-1094663 | | | 4 | 360,81 | 825 |
| 60. | Geier L.+D.+A.+Ella | 652.04 | 09.012 | 0731-20- 42 | | | 4 | 356,56 | 825 |
| 61. | Geier L.+D.+A.+Ella | 652.04 | 09.012 | 7515-20-1191 | | | 4 | 353,45 | 999 |
| 62. | Geier L.+D.+A.+Ella | 652.04 | 09.012 | 7515-20-1169 | | | 4 | 350,09 | 825 |
| 63. | SG Gründinger | 652.04 | 05.007 | 7569-20- 240 | | | 4 | 344,78 | 825 |
| 64. | SG Dillinger/Kusser | 652.02 | 14.005 | 0454-20- 139 | | | 4 | 326,01 | 1046 |
| 65. | Geier L.+D.+A.+Ella | 652.04 | 09.012 | 7515-20-1172 | | | 4 | 320,70 | 904 |
| 66. | SG Gründinger | 652.04 | 05.007 | 7569-20- 223 | | | 4 | 316,94 | 1035 |
| 67. | Schwarz Kurt | 652.02 | 13.009 | 6883-20- 398 | | | 4 | 316,66 | 915 |
| 68. | Geier L.+D.+A.+Ella | 652.04 | 09.012 | 7515-20-1197 | | | 4 | 315,77 | 825 |
| 69. | Geier L.+D.+A.+Ella | 652.04 | 09.012 | NL20-1094671 | | | 4 | 313,46 | 904 |
| 70. | SG Dillinger/Kusser | 652.02 | 14.005 | 5138-20-3470 | | | 4 | 308,55 | 836 |
| 71. | SG Dillinger/Kusser | 652.02 | 14.005 | 0454-20- 186 | | | 4 | 305,75 | 945 |
| 72. | Thoma Jakob | 652.02 | 07.002 | 8767-20-2051 | | | 4 | 304,32 | 1046 |
| 73. | Geier L.+D.+A.+Ella | 652.04 | 09.012 | 7515-20-1161 | | | 4 | 303,72 | 904 |
| 74. | Schätzl Herbert | 652.02 | 14.003 | 7040-20- 49 | | | 4 | 301,98 | 836 |
| 75. | SG Dillinger/Kusser | 652.02 | 14.005 | 5138-20-3507 | | | 4 | 301,49 | 1010 |
| 76. | Geier L.+D.+A.+Ella | 652.04 | 09.012 | 7515-20-1168 | | | 4 | 300,94 | 999 |
| 77. | SG Gründinger | 652.04 | 05.007 | 7569-20- 264 | | | 4 | 300,07 | 904 |
| 78. | Allmannsberger/Kainz | 652.02 | 02.002 | 5007-20- 309 | | | 4 | 292,62 | 1046 |
| 79. | SG Gründinger | 652.04 | 05.007 | 7569-20- 236 | | | 4 | 290,58 | 999 |
| 80. | Freund Heinrich | 652.04 | 27.003 | 7040-20- 174 | | | 4 | 280,99 | 825 |

MS-BEZ.: REISEÜBERSICHT/PLANUNG

MS.NR.:1163-001 (652/02-Pas)

| Fl | Auflass- | Auflassort | RV | | | | FG | | | | Regional-Gr. | | | | Regional | | | | National | | | |
|------------------|----------|---------------|----|-------|-----|-----|------|------|-----|------|--------------|------|-----|----|----------|------|-----|-----|----------|------|-----|--|
| | | | Nr | Datum | VBM | KM | ZÜ | TBN | KKD | KM | ZÜ | TBN | KKD | KM | ZÜ | TBN | KKD | KM | ZÜ | TBN | KKD | |
| *** Altreise *** | | | | | | | | | | | | | | | | | | | | | | |
| 04 | 17.05. | Schwabach | | 206 | 23 | 983 | 0:05 | 203 | 48 | 2184 | 0:05 | | | | | | | | | | | |
| 05 | 24.05. | Ansbach | 1 | A | 243 | 23 | 956 | 0:06 | 241 | 48 | 2138 | 0:06 | 227 | 86 | 3752 | 0:07 | | | | | | |
| 06 | 30.05. | Uffenheim | 1 | | 273 | 23 | 950 | 0:16 | 270 | 47 | 2097 | 0:14 | 256 | 85 | 3665 | 0:12 | | | | | | |
| 08 | 13.06. | Michelstadt N | 3 | | 352 | 22 | 884 | 0:29 | 349 | 46 | 2009 | 0:29 | 336 | 83 | 3511 | 0:31 | 321 | 205 | 7536 | 0:37 | | |
| 09 | 21.06. | Bad Kreuznach | 3 | B | 440 | 22 | 808 | 0:43 | 438 | 45 | 1762 | 0:32 | 424 | 79 | 3064 | 0:36 | 410 | 198 | 6508 | 0:38 | | |
| 10 | 28.06. | Bitburg | 3 | S | 535 | 22 | 759 | 1:45 | 533 | 45 | 1650 | 1:35 | 519 | 80 | 2867 | 1:46 | 506 | 195 | 5904 | 2:11 | | |
| 11 | 05.07. | Michelstadt N | 3 | | 352 | 20 | 566 | 0:39 | 349 | 38 | 1190 | 0:35 | 336 | 72 | 2145 | 0:37 | 321 | 184 | 4785 | 0:53 | | |
| 12 | 12.07. | Bad Kreuznach | 3 | | 440 | 20 | 532 | 0:18 | 438 | 38 | 1103 | 0:20 | 424 | 71 | 1940 | 0:20 | 410 | 180 | 4337 | 0:22 | | |
| 13 | 19.07. | Bad Kreuznach | 3 | | 440 | 16 | 442 | 0:20 | 438 | 32 | 913 | 0:23 | 424 | 64 | 1705 | 0:22 | 410 | 165 | 3910 | 0:27 | | |
| 14 | 25.07. | Michelstadt N | 3 | | 352 | 15 | 400 | 0:14 | 349 | 30 | 837 | 0:13 | 336 | 61 | 1562 | 0:15 | 321 | 153 | 3583 | 0:15 | | |
| 15 | 02.08. | Bitburg | 3 | G | 535 | 13 | 360 | 0:54 | 533 | 23 | 640 | 0:44 | 519 | 48 | 1160 | 0:49 | 506 | 124 | 2634 | 0:54 | | |

| | | | | | | | | | | | | | | | | | | | | |
|-------------------|--------|---------------|---|---|-----|----|-----|------|-----|----|------|------|-----|----|------|------|-----|-----|------|------|
| *** Jungreise *** | | | | | | | | | | | | | | | | | | | | |
| 35 | 23.08. | Hemau | | | 142 | 17 | 835 | 0:06 | 139 | 42 | 2033 | 0:08 | | | | | | | | |
| 36 | 28.08. | Neumarkt | | | 178 | 17 | 816 | 0:13 | 175 | 41 | 1916 | 0:15 | | | | | | | | |
| 37 | 05.09. | Ansbach | 1 | | 243 | 14 | 662 | 0:15 | 241 | 35 | 1625 | 0:17 | 227 | 64 | 3059 | 0:16 | | | | |
| 38 | 13.09. | Uffenheim | 3 | B | 273 | 13 | 611 | 0:12 | 270 | 33 | 1492 | 0:29 | 256 | 62 | 2873 | 0:28 | 243 | 163 | 6091 | 0:27 |
| 39 | 20.09. | Michelstadt N | 3 | | 352 | 11 | 547 | 0:30 | 349 | 24 | 1181 | 0:29 | 335 | 53 | 2481 | 0:29 | 323 | 127 | 4905 | 0:32 |

MS-BEZ.: **RV-JUNGTIERMEISTERSCHAFT** MS.NR.:1163-105 (652/02-Pas)
 MS-ART: **04 BESTE TAUBEN, JAHRG. = 20**
 MS-MOD.: **RV-BASIS PUNKTSYSTEM= AS-PKT BESTE FLG=04**
PFL-KM=2X080,2X200
 MS-FLG.: **35 36 37 38 39**
**** ** ** ** ****

| RANG | NAME | RG | RV | VV | ZZZ | MSCH | M | W | PRS | PUNKTE | KM | VoW |
|------|----------------------|--------|--------|----|-----|------|----|---|-----|---------|------|------|
| 1. | SG Dillinger/Kusser | 652.02 | 14.005 | 01 | 4 | 0 | 16 | | | 1244,50 | 3772 | 1. |
| 2. | Allmannsberger/Kainz | 652.02 | 02.002 | 01 | 4 | 0 | 16 | | | 1126,03 | 4112 | 2. |
| 3. | Thoma Jakob | 652.02 | 07.002 | 01 | 4 | 0 | 16 | | | 1068,73 | 4053 | + 9. |
| 4. | SG Büttner | 652.02 | 14.001 | 01 | 4 | 0 | 16 | | | 1051,17 | 3873 | 4. |
| 5. | Schwarz Sandro | 652.02 | 13.007 | 01 | 4 | 0 | 16 | | | 938,15 | 3771 | 5. |
| 6. | Hazoth Hermann | 652.02 | 01.001 | 01 | 4 | 0 | 16 | | | 644,76 | 3837 | + 8. |
| 7. | Schwarz Kurt | 652.02 | 13.009 | 01 | 4 | 0 | 15 | | | 986,47 | 3548 | 7. |
| 8. | Schätzl Herbert | 652.02 | 14.003 | 01 | 4 | 0 | 15 | | | 933,06 | 3071 | - 3. |
| 9. | Krenn M. u. F. | 652.02 | 13.006 | 01 | 4 | 0 | 14 | | | 947,75 | 3350 | - 6. |
| 10. | SG Pils / Tschache | 652.02 | 04.001 | 01 | 4 | 0 | 13 | | | 601,65 | 3412 | 10. |
| 11. | Kriegner Gerhard | 652.02 | 13.008 | 01 | 4 | 0 | 8 | | | 535,29 | 1280 | 11. |
| 12. | Zirngibl Rainer | 652.02 | 13.011 | 01 | 4 | 0 | 8 | | | 382,23 | 1454 | 12. |
| 13. | Nimon Kadaj | 652.02 | 04.002 | 01 | 4 | 0 | 8 | | | 248,51 | 1547 | 13. |
| 14. | Reitberger A | 652.02 | 03.004 | 01 | 4 | 0 | 7 | | | 218,27 | 1138 | 14. |
| 15. | Brunner Jo. & Marlon | 652.02 | 06.003 | 01 | 4 | 0 | 6 | | | 354,03 | 1382 | 15. |
| 16. | Rametsteiner H.&E. | 652.02 | 09.015 | 01 | 4 | 0 | 5 | | | 207,21 | 1368 | 16. |
| 17. | Moser A./Cedr./Flor. | 652.02 | 11.001 | 01 | 2 | 0 | 3 | | | 81,67 | 498 | 17. |

MS-BEZ.: RV-BESTE JUNGTAUBE MS.NR.:1163-106 (652/02-Pas)
 MS-ART: BESTGEREISTE TAUBEN
 MS-MOD.: RV-BASIS PUNKTSYSTEM= AS-PKT

MS-FLG.: 35 36 37 38 39
 ** ** ** ** **

| RANG | NAME | RG | RV | VV | ZZZ | RINGNR. | PR | KM | PUNKTE |
|------|----------------------|--------|--------|-----------|------|---------|----|------|--------|
| 1. | SG Büttner | 652.02 | 14.001 | 0454-20- | 40 | | 5 | 1188 | 409,17 |
| 2. | Allmannsberger/Kainz | 652.02 | 02.002 | 5007-20- | 332 | | 5 | 1188 | 341,12 |
| 3. | Schwarz Kurt | 652.02 | 13.009 | 0454-20- | 72 | | 5 | 1188 | 324,97 |
| 4. | Krenn M. u. F. | 652.02 | 13.006 | 6883-20- | 277 | | 5 | 1188 | 293,12 |
| 5. | Allmannsberger/Kainz | 652.02 | 02.002 | 5007-20- | 285 | | 5 | 1188 | 289,42 |
| 6. | Allmannsberger/Kainz | 652.02 | 02.002 | 5007-20- | 318 | | 5 | 1188 | 283,45 |
| 7. | SG Dillinger/Kusser | 652.02 | 14.005 | 0454-20- | 157 | | 5 | 1188 | 281,85 |
| 8. | SG Büttner | 652.02 | 14.001 | 0454-20- | 58 | | 5 | 1188 | 280,89 |
| 9. | SG Dillinger/Kusser | 652.02 | 14.005 | 5138-20- | 3665 | | 5 | 1188 | 277,50 |
| 10. | SG Dillinger/Kusser | 652.02 | 14.005 | 0454-20- | 204 | | 5 | 1188 | 260,80 |
| 11. | SG Dillinger/Kusser | 652.02 | 14.005 | 0454-20- | 139 | | 4 | 1046 | 322,71 |
| 12. | Thoma Jakob | 652.02 | 07.002 | 8767-20- | 2051 | | 4 | 1046 | 302,83 |
| 13. | Allmannsberger/Kainz | 652.02 | 02.002 | 5007-20- | 309 | | 4 | 1046 | 285,24 |
| 14. | Thoma Jakob | 652.02 | 07.002 | 5496-20- | 61 | | 4 | 1046 | 267,94 |
| 15. | Thoma Jakob | 652.02 | 07.002 | 8767-20- | 2059 | | 4 | 1046 | 260,54 |
| 16. | Hazoth Hermann | 652.02 | 01.001 | 4834-20- | 510 | | 4 | 1046 | 238,50 |
| 17. | Thoma Jakob | 652.02 | 07.002 | 5496-20- | 3 | | 4 | 1046 | 222,09 |
| 18. | SG Dillinger/Kusser | 652.02 | 14.005 | 0454-20- | 173 | | 4 | 1046 | 194,75 |
| 19. | SG Dillinger/Kusser | 652.02 | 14.005 | 0454-20- | 181 | | 4 | 1046 | 140,18 |
| 20. | Schwarz Sandro | 652.02 | 13.007 | 6883-20- | 24 | | 4 | 1010 | 334,91 |
| 21. | SG Dillinger/Kusser | 652.02 | 14.005 | 5138-20- | 3507 | | 4 | 1010 | 292,91 |
| 22. | Schwarz Sandro | 652.02 | 13.007 | 6883-20- | 82 | | 4 | 1010 | 223,84 |
| 23. | Thoma Jakob | 652.02 | 07.002 | 8767-20- | 2033 | | 4 | 1010 | 219,60 |
| 24. | SG Dillinger/Kusser | 652.02 | 14.005 | 0454-20- | 225 | | 4 | 1010 | 208,63 |
| 25. | Krenn M. u. F. | 652.02 | 13.006 | 7075-20- | 30 | | 4 | 1010 | 183,87 |
| 26. | Thoma Jakob | 652.02 | 07.002 | 5496-20- | 23 | | 4 | 1010 | 152,23 |
| 27. | SG Pils / Tschache | 652.02 | 04.001 | 5270-20- | 530 | | 4 | 1010 | 147,59 |
| 28. | Hazoth Hermann | 652.02 | 01.001 | 4021-20- | 964 | | 4 | 1010 | 140,79 |
| 29. | Allmannsberger/Kainz | 652.02 | 02.002 | 7216-20- | 985 | | 4 | 1010 | 95,86 |
| 30. | Schwarz Sandro | 652.02 | 13.007 | 6883-20- | 5 | | 4 | 1010 | 86,16 |
| 31. | SG Dillinger/Kusser | 652.02 | 14.005 | 0454-20- | 198 | | 4 | 945 | 312,74 |
| 32. | SG Dillinger/Kusser | 652.02 | 14.005 | 0454-20- | 186 | | 4 | 945 | 303,99 |
| 33. | SG Dillinger/Kusser | 652.02 | 14.005 | 0454-20- | 138 | | 4 | 945 | 302,85 |
| 34. | SG Dillinger/Kusser | 652.02 | 14.005 | 5138-20- | 3454 | | 4 | 945 | 276,26 |
| 35. | SG Dillinger/Kusser | 652.02 | 14.005 | 5138-20- | 3360 | | 4 | 945 | 249,05 |
| 36. | SG Büttner | 652.02 | 14.001 | 0454-20- | 8 | | 4 | 945 | 224,11 |
| 37. | SG Dillinger/Kusser | 652.02 | 14.005 | 5138-20- | 3630 | | 4 | 945 | 213,43 |
| 38. | SG Dillinger/Kusser | 652.02 | 14.005 | 5138-20- | 3377 | | 4 | 945 | 205,93 |
| 39. | SG Büttner | 652.02 | 14.001 | RP0512004 | 129 | | 4 | 945 | 171,14 |
| 40. | Schwarz Kurt | 652.02 | 13.009 | 6883-20- | 381 | | 4 | 945 | 162,29 |
| 41. | Hazoth Hermann | 652.02 | 01.001 | 4834-20- | 585 | | 4 | 945 | 128,16 |
| 42. | Hazoth Hermann | 652.02 | 01.001 | 4834-20- | 506 | | 4 | 945 | 92,14 |
| 43. | Schwarz Kurt | 652.02 | 13.009 | 6883-20- | 398 | | 4 | 915 | 311,88 |
| 44. | SG Dillinger/Kusser | 652.02 | 14.005 | 0454-20- | 158 | | 4 | 915 | 242,10 |
| 45. | Thoma Jakob | 652.02 | 07.002 | 8767-20- | 2236 | | 4 | 915 | 237,42 |
| 46. | SG Dillinger/Kusser | 652.02 | 14.005 | 0454-20- | 151 | | 4 | 915 | 190,42 |
| 47. | Schwarz Sandro | 652.02 | 13.007 | 6883-20- | 64 | | 4 | 915 | 154,42 |
| 48. | SG Büttner | 652.02 | 14.001 | 5496-20- | 140 | | 4 | 915 | 128,35 |
| 49. | Schwarz Sandro | 652.02 | 13.007 | 6883-20- | 36 | | 4 | 915 | 107,82 |
| 50. | SG Dillinger/Kusser | 652.02 | 14.005 | 5138-20- | 3470 | | 4 | 836 | 305,06 |
| 51. | Schätzl Herbert | 652.02 | 14.003 | 7040-20- | 49 | | 4 | 836 | 288,90 |
| 52. | SG Dillinger/Kusser | 652.02 | 14.005 | 5138-20- | 3262 | | 4 | 836 | 246,13 |
| 53. | SG Büttner | 652.02 | 14.001 | 0454-20- | 36 | | 4 | 836 | 225,53 |
| 54. | Schwarz Sandro | 652.02 | 13.007 | 6883-20- | 21 | | 4 | 836 | 224,98 |
| 55. | SG Dillinger/Kusser | 652.02 | 14.005 | 6883-20- | 39 | | 4 | 836 | 212,07 |
| 56. | Schätzl Herbert | 652.02 | 14.003 | 7040-20- | 47 | | 4 | 836 | 210,12 |
| 57. | SG Dillinger/Kusser | 652.02 | 14.005 | 5138-20- | 3510 | | 4 | 836 | 208,37 |
| 58. | SG Dillinger/Kusser | 652.02 | 14.005 | 5138-20- | 3588 | | 4 | 836 | 200,55 |
| 59. | Schätzl Herbert | 652.02 | 14.003 | 7040-20- | 8 | | 4 | 836 | 196,46 |
| 60. | SG Dillinger/Kusser | 652.02 | 14.005 | 0454-20- | 169 | | 4 | 836 | 160,34 |
| 61. | Hazoth Hermann | 652.02 | 01.001 | 4834-20- | 563 | | 4 | 836 | 137,31 |
| 62. | Allmannsberger/Kainz | 652.02 | 02.002 | 5007-20- | 290 | | 4 | 836 | 133,88 |
| 63. | SG Pils / Tschache | 652.02 | 04.001 | 0454-20- | 11 | | 3 | 868 | 251,36 |
| 64. | SG Dillinger/Kusser | 652.02 | 14.005 | 5138-20- | 3331 | | 3 | 868 | 199,12 |
| 65. | Schwarz Sandro | 652.02 | 13.007 | 6883-20- | 74 | | 3 | 868 | 189,58 |
| 66. | Thoma Jakob | 652.02 | 07.002 | 5496-20- | 29 | | 3 | 868 | 184,65 |
| 67. | Thoma Jakob | 652.02 | 07.002 | 5496-20- | 6 | | 3 | 868 | 169,99 |
| 68. | SG Dillinger/Kusser | 652.02 | 14.005 | 0454-20- | 191 | | 3 | 868 | 129,35 |
| 69. | Hazoth Hermann | 652.02 | 01.001 | 7075-20- | 49 | | 3 | 868 | 125,82 |
| 70. | Hazoth Hermann | 652.02 | 01.001 | 4834-20- | 543 | | 3 | 868 | 124,47 |
| 71. | Thoma Jakob | 652.02 | 07.002 | 8767-20- | 2238 | | 3 | 803 | 221,03 |
| 72. | SG Dillinger/Kusser | 652.02 | 14.005 | 5138-20- | 3272 | | 3 | 803 | 163,03 |
| 73. | SG Büttner | 652.02 | 14.001 | 0454-20- | 60 | | 3 | 803 | 162,53 |
| 74. | Schwarz Kurt | 652.02 | 13.009 | 6883-20- | 390 | | 3 | 803 | 158,03 |
| 75. | SG Büttner | 652.02 | 14.001 | 0454-20- | 76 | | 3 | 803 | 156,30 |
| 76. | SG Büttner | 652.02 | 14.001 | 0454-20- | 14 | | 3 | 803 | 139,51 |
| 77. | Allmannsberger/Kainz | 652.02 | 02.002 | 5007-20- | 289 | | 3 | 803 | 116,90 |
| 78. | Allmannsberger/Kainz | 652.02 | 02.002 | 5007-20- | 337 | | 3 | 803 | 104,34 |
| 79. | SG Dillinger/Kusser | 652.02 | 14.005 | 0454-20- | 162 | | 3 | 803 | 84,82 |
| 80. | SG Dillinger/Kusser | 652.02 | 14.005 | 0454-20- | 211 | | 3 | 773 | 236,06 |

MS-BEZ.: RV-GENERAL-MS (ALT-JÄHR-JG.) MS.NR.:1163-107 (652/02-Pas)
MS-ART: 11 BESTE TAUBEN
MS-MOD.: RV-BASIS PUNKTSYSTEM= AS-PKT

MS-FLG.: 04 05 06 08 09 10 11 12 13 14 15 35 36 37 38 39
RANG-----NAME-----RG-RV-VV.ZZZ-MSCH-M--W--PRS----KM---PUNKTE-----
1. Allmannsberger/Kainz 652.02 02.002 00 4 7 84 30385 5713,82
2. Schwarz Sandro 652.02 13.007 00 4 7 83 29590 4863,05
3. SG Dillinger/Kusser 652.02 14.005 00 11 0 77 26575 5100,77
4. SG Büttner 652.02 14.001 00 6 5 76 27175 4321,99
5. Krenn M. u. F. 652.02 13.006 00 4 7 76 26787 3942,36
6. Hazoth Hermann 652.02 01.001 00 4 7 73 25395 3796,75
7. SG Pils / Tschache 652.02 04.001 00 4 7 68 24090 3934,16
8. Nimon Kadaj 652.02 04.002 00 7 4 54 18907 2325,21
9. Kriegner Gerhard 652.02 13.008 00 4 7 52 17152 3029,64
10. Schätzl Herbert 652.02 14.003 00 11 0 48 14524 2638,42

MS-BEZ.: REISEÜBERSICHT/PLANUNG MS.NR.:1167-001 (652/04-Wal)

Fl Auflass- RV FG Regional-Gr. Regional National
Nr Datum Auflassort RG VBM KM ZÜ TBN KKD KM ZÜ TBN KKD KM ZÜ TBN KKD KM ZÜ TBN KKD KM ZÜ TBN KKD
*** Altreise ***
04 17.05. Schwabach 200 25 1201 0:04 203 48 2184 0:05
05 24.05. Ansbach 1 A 239 25 1182 0:06 241 48 2138 0:06 227 86 3752 0:07
06 30.05. Uffenheim 1 267 24 1147 0:10 270 47 2097 0:14 256 85 3665 0:12
08 13.06. Michelstadt N 3 346 24 1125 0:24 349 46 2009 0:29 336 83 3511 0:31 321 205 7536 0:37
09 21.06. Bad Kreuznach 3 B 435 23 954 0:25 438 45 1762 0:32 424 79 3064 0:36 410 198 6508 0:38
10 28.06. Bitburg 3 S 530 23 891 1:23 533 45 1650 1:35 519 80 2867 1:46 506 195 5904 2:11
11 05.07. Michelstadt N 3 346 18 624 0:26 349 38 1190 0:35 336 72 2145 0:37 321 184 4785 0:53
12 12.07. Bad Kreuznach 3 435 18 571 0:18 438 38 1103 0:20 424 71 1940 0:20 410 180 4337 0:22
13 19.07. Bad Kreuznach 3 435 16 471 0:23 438 32 913 0:23 424 64 1705 0:22 410 165 3910 0:27
14 25.07. Michelstadt N 3 346 15 437 0:10 349 30 837 0:13 336 61 1562 0:15 321 153 3583 0:15
15 02.08. Bitburg 3 G 530 10 280 0:35 533 23 640 0:44 519 48 1160 0:49 506 124 2634 0:54
*** Jungreise ***
35 23.08. Hemau 137 25 1198 0:09 139 42 2033 0:08
36 28.08. Neumarkt A 171 24 1100 0:16 175 41 1916 0:15
37 05.09. Ansbach 1 239 21 963 0:17 241 35 1625 0:17 227 64 3059 0:16
38 13.09. Uffenheim 3 B 267 20 881 0:30 270 33 1492 0:29 256 62 2873 0:28 243 163 6091 0:27
39 20.09. Michelstadt N 3 346 13 634 0:28 349 24 1181 0:29 335 53 2481 0:29 323 127 4905 0:32

MS-BEZ.: RV-JUNGTIERMEISTERSCHAFT MS.NR.:1167-105 (652/04-Wal)
MS-ART: 05 BESTE TAUBEN
MS-MOD.: HAT-HAT PUNKTSYSTEM= AS-PKT

MS-FLG.: 35 36 37 38 39
RANG-----NAME-----RG-RV-VV.ZZZ-MSCH-M--W--PRS----KM---PUNKTE---VoW---
1. Geier L.+D.+A.+Ella 652.04 09.012 01 5 0 25 5870 2210,19 1.
2. SG Gründinger 652.04 05.007 01 5 0 25 5870 1914,44 2.
3. Freund Heinrich 652.04 27.003 01 5 0 24 5731 1260,24 3.
4. Schönberger Josef 652.04 25.002 01 5 0 24 5731 1198,67 4.
5. Gubisch F,Chr.,Jonas 652.04 06.005 01 5 0 22 5249 1137,83 + 7.
6. SG Kern&Liebl Sandra 652.04 27.001 01 5 0 21 5206 1101,89 - 5.
7. SG Siglmüller 652.04 26.006 01 5 0 21 5110 926,85 - 6.
8. Schauburger M. 652.04 08.002 01 5 0 21 5104 1271,85 8.
9. Hellauer L. 652.04 08.001 01 5 0 19 4856 985,68 + 11.
10. Simmel Paul.M.u.S. 652.04 26.003 01 5 0 19 4570 1019,43 10.
11. SG Weber/Simet 652.04 06.003 01 5 0 16 4380 637,09 + 13.
12. Blöchl Gerhard 652.04 07.006 01 5 0 16 3878 662,01 12.
13. Bretl J. u. Frau 652.04 14.004 01 5 0 16 3395 626,99 - 9.
14. Hutterer A.u.M. 652.04 26.001 01 5 0 13 2679 384,81 14.
15. Denk Josef 652.04 25.001 01 5 0 13 2532 397,08 + 16.
16. Blöchl F/F/Annalena 652.04 07.004 01 5 0 12 2672 536,03 - 15.
17. Anetzberger Willi 652.04 17.001 01 5 0 11 2045 429,42 17.
18. Leuchtner A. 652.04 02.005 01 5 0 11 1935 701,83 18.
19. Hoffmann Joh.u.Wolfg 652.04 25.005 01 5 0 10 1672 285,33 19.
20. Schiebl Konrad 652.04 05.006 01 5 0 8 1628 362,56 20.
21. Penzenstadler H.u.S. 652.04 14.005 01 5 0 7 1438 370,97 21.
22. Mader A/Lenz Robin 652.04 04.001 01 5 0 6 906 342,72 22.
23. Bichlmeier Fr.&.Fra. 652.04 04.006 01 5 0 5 875 360,38 23.
24. Penzenstadler Mich. 652.04 26.004 01 5 0 5 875 131,33 24.

MS-BEZ.: RV-BESTE JUNGTAUBE MS.NR.:1167-106 (652/04-Wal)
MS-ART: BESTGEREISTE TAUBEN
MS-MOD.: HAT-HAT PUNKTSYSTEM= AS-PKT

MS-FLG.: 35 36 37 38 39
** ** ** **

| RANG | NAME | RG | RV | VV | ZZZ | RINGNR. | PR | KM | PUNKTE |
|------|----------------------|--------|--------|--------------|-----|---------|--------|----|--------|
| 1. | Geier L.+D.+A.+Ella | 652.04 | 09.012 | 7515-20-1181 | 5 | 1174 | 478,30 | | |
| 2. | Geier L.+D.+A.+Ella | 652.04 | 09.012 | 7515-20-1165 | 5 | 1174 | 441,27 | | |
| 3. | Geier L.+D.+A.+Ella | 652.04 | 09.012 | 6529-20- 511 | 5 | 1174 | 439,24 | | |
| 4. | SG Gründinger | 652.04 | 05.007 | 7569-20- 222 | 5 | 1174 | 437,04 | | |
| 5. | Geier L.+D.+A.+Ella | 652.04 | 09.012 | 7515-20-1202 | 5 | 1174 | 434,89 | | |
| 6. | Geier L.+D.+A.+Ella | 652.04 | 09.012 | 7515-20-1188 | 5 | 1174 | 416,49 | | |
| 7. | Geier L.+D.+A.+Ella | 652.04 | 09.012 | 7515-20-1203 | 5 | 1174 | 404,07 | | |
| 8. | SG Gründinger | 652.04 | 05.007 | 7569-20- 251 | 5 | 1174 | 397,45 | | |
| 9. | Geier L.+D.+A.+Ella | 652.04 | 09.012 | 7515-20-1166 | 5 | 1174 | 382,95 | | |
| 10. | Geier L.+D.+A.+Ella | 652.04 | 09.012 | 7515-20-1186 | 5 | 1174 | 379,51 | | |
| 11. | Geier L.+D.+A.+Ella | 652.04 | 09.012 | 2238-20- 245 | 5 | 1174 | 375,63 | | |
| 12. | SG Gründinger | 652.04 | 05.007 | 7569-20- 206 | 5 | 1174 | 369,05 | | |
| 13. | Simmel Paul.M.u.S. | 652.04 | 26.003 | 7075-20- 129 | 5 | 1174 | 363,23 | | |
| 14. | Geier L.+D.+A.+Ella | 652.04 | 09.012 | 7515-20-1187 | 5 | 1174 | 361,77 | | |
| 15. | SG Gründinger | 652.04 | 05.007 | 7569-20- 213 | 5 | 1174 | 360,53 | | |
| 16. | SG Gründinger | 652.04 | 05.007 | 7569-20- 218 | 5 | 1174 | 350,37 | | |
| 17. | SG Gründinger | 652.04 | 05.007 | 7569-20- 269 | 5 | 1174 | 349,58 | | |
| 18. | Geier L.+D.+A.+Ella | 652.04 | 09.012 | 7515-20-1189 | 5 | 1174 | 333,75 | | |
| 19. | Geier L.+D.+A.+Ella | 652.04 | 09.012 | 7515-20-1221 | 5 | 1174 | 332,07 | | |
| 20. | Geier L.+D.+A.+Ella | 652.04 | 09.012 | 7515-20-1204 | 5 | 1174 | 327,93 | | |
| 21. | SG Gründinger | 652.04 | 05.007 | 7569-20- 272 | 5 | 1174 | 327,60 | | |
| 22. | Schönberger Josef | 652.04 | 25.002 | 7074-20- 757 | 5 | 1174 | 315,51 | | |
| 23. | Gubisch F,Chr.,Jonas | 652.04 | 06.005 | 5470-20- 655 | 5 | 1174 | 303,79 | | |
| 24. | Geier L.+D.+A.+Ella | 652.04 | 09.012 | 6529-20- 527 | 5 | 1174 | 297,91 | | |
| 25. | SG Gründinger | 652.04 | 05.007 | 7569-20- 217 | 5 | 1174 | 296,42 | | |
| 26. | Freund Heinrich | 652.04 | 27.003 | 7040-20- 180 | 5 | 1174 | 290,73 | | |
| 27. | SG Siglmüller | 652.04 | 26.006 | 7075-20- 340 | 5 | 1174 | 282,62 | | |
| 28. | Freund Heinrich | 652.04 | 27.003 | 7040-20- 151 | 5 | 1174 | 264,02 | | |
| 29. | Schönberger Josef | 652.04 | 25.002 | 7074-20- 732 | 5 | 1174 | 254,53 | | |
| 30. | Schönberger Josef | 652.04 | 25.002 | 7074-20- 758 | 5 | 1174 | 252,61 | | |
| 31. | Schauberger M. | 652.04 | 08.002 | 7215-20- 616 | 5 | 1174 | 249,05 | | |
| 32. | SG Kern&Liebl Sandra | 652.04 | 27.001 | 7040-20- 223 | 5 | 1174 | 242,16 | | |
| 33. | Gubisch F,Chr.,Jonas | 652.04 | 06.005 | 5470-20- 631 | 5 | 1174 | 240,14 | | |
| 34. | Freund Heinrich | 652.04 | 27.003 | 7040-20- 156 | 5 | 1174 | 230,00 | | |
| 35. | Freund Heinrich | 652.04 | 27.003 | 7040-20- 152 | 5 | 1174 | 196,53 | | |
| 36. | SG Siglmüller | 652.04 | 26.006 | 7075-20- 310 | 5 | 1174 | 194,16 | | |
| 37. | Schönberger Josef | 652.04 | 25.002 | 7074-20- 708 | 5 | 1174 | 186,66 | | |
| 38. | Geier L.+D.+A.+Ella | 652.04 | 09.012 | 7515-20-1170 | 4 | 1035 | 364,61 | | |
| 39. | SG Gründinger | 652.04 | 05.007 | 7569-20- 223 | 4 | 1035 | 316,94 | | |
| 40. | Freund Heinrich | 652.04 | 27.003 | 7040-20- 121 | 4 | 1035 | 278,96 | | |
| 41. | Geier L.+D.+A.+Ella | 652.04 | 09.012 | 7515-20-1171 | 4 | 1035 | 240,02 | | |
| 42. | SG Kern&Liebl Sandra | 652.04 | 27.001 | 7040-20- 230 | 4 | 1035 | 212,66 | | |
| 43. | Freund Heinrich | 652.04 | 27.003 | 7040-20- 157 | 4 | 1035 | 209,24 | | |
| 44. | Freund Heinrich | 652.04 | 27.003 | 7040-20- 132 | 4 | 1035 | 193,20 | | |
| 45. | Schönberger Josef | 652.04 | 25.002 | 7074-20- 755 | 4 | 1035 | 189,36 | | |
| 46. | SG Gründinger | 652.04 | 05.007 | 7569-20- 241 | 4 | 1035 | 167,26 | | |
| 47. | Gubisch F,Chr.,Jonas | 652.04 | 06.005 | 5470-20- 667 | 4 | 1035 | 154,14 | | |
| 48. | SG Siglmüller | 652.04 | 26.006 | 7040-20- 250 | 4 | 1035 | 138,59 | | |
| 49. | Schönberger Josef | 652.04 | 25.002 | 7074-20- 754 | 4 | 1035 | 136,44 | | |
| 50. | SG Weber/Simet | 652.04 | 06.003 | 5470-20- 570 | 4 | 1035 | 130,15 | | |
| 51. | Blöchl Gerhard | 652.04 | 07.006 | 6529-20- 661 | 4 | 1035 | 122,50 | | |
| 52. | Schauberger M. | 652.04 | 08.002 | 7215-20- 622 | 4 | 999 | 383,44 | | |
| 53. | Geier L.+D.+A.+Ella | 652.04 | 09.012 | 7515-20-1191 | 4 | 999 | 353,45 | | |
| 54. | Geier L.+D.+A.+Ella | 652.04 | 09.012 | 7515-20-1168 | 4 | 999 | 300,94 | | |
| 55. | SG Gründinger | 652.04 | 05.007 | 7569-20- 236 | 4 | 999 | 290,58 | | |
| 56. | SG Kern&Liebl Sandra | 652.04 | 27.001 | 7040-20- 249 | 4 | 999 | 276,82 | | |
| 57. | Hellauer L. | 652.04 | 08.001 | 7215-20- 656 | 4 | 999 | 254,49 | | |
| 58. | Geier L.+D.+A.+Ella | 652.04 | 09.012 | 7515-20-1180 | 4 | 999 | 240,23 | | |
| 59. | Schauberger M. | 652.04 | 08.002 | 7215-20- 613 | 4 | 999 | 208,93 | | |
| 60. | SG Gründinger | 652.04 | 05.007 | 7569-20- 277 | 4 | 999 | 207,69 | | |
| 61. | Hellauer L. | 652.04 | 08.001 | 7215-20- 659 | 4 | 999 | 206,97 | | |
| 62. | Geier L.+D.+A.+Ella | 652.04 | 09.012 | 7515-20-1253 | 4 | 999 | 199,56 | | |
| 63. | SG Kern&Liebl Sandra | 652.04 | 27.001 | 7040-20- 205 | 4 | 999 | 198,29 | | |
| 64. | Hellauer L. | 652.04 | 08.001 | 7215-20- 647 | 4 | 999 | 176,59 | | |
| 65. | SG Kern&Liebl Sandra | 652.04 | 27.001 | 7040-20- 204 | 4 | 999 | 171,96 | | |
| 66. | Schauberger M. | 652.04 | 08.002 | 7215-20- 579 | 4 | 999 | 164,19 | | |
| 67. | Hellauer L. | 652.04 | 08.001 | 7215-20- 650 | 4 | 999 | 145,16 | | |
| 68. | Schönberger Josef | 652.04 | 25.002 | 7074-20- 741 | 4 | 999 | 117,59 | | |
| 69. | SG Kern&Liebl Sandra | 652.04 | 27.001 | 7040-20- 241 | 4 | 999 | 105,31 | | |
| 70. | Geier L.+D.+A.+Ella | 652.04 | 09.012 | NL20-1094668 | 4 | 933 | 276,00 | | |
| 71. | Schauberger M. | 652.04 | 08.002 | 7215-20- 621 | 4 | 933 | 266,24 | | |
| 72. | Geier L.+D.+A.+Ella | 652.04 | 09.012 | 7515-20-1239 | 4 | 933 | 265,95 | | |
| 73. | Gubisch F,Chr.,Jonas | 652.04 | 06.005 | 5470-20- 602 | 4 | 933 | 235,08 | | |
| 74. | SG Siglmüller | 652.04 | 26.006 | 7075-20- 136 | 4 | 933 | 234,23 | | |
| 75. | SG Gründinger | 652.04 | 05.007 | 7569-20- 216 | 4 | 933 | 223,98 | | |
| 76. | Geier L.+D.+A.+Ella | 652.04 | 09.012 | 7515-20-1211 | 4 | 933 | 220,91 | | |
| 77. | Freund Heinrich | 652.04 | 27.003 | 7040-20- 118 | 4 | 933 | 217,71 | | |
| 78. | Gubisch F,Chr.,Jonas | 652.04 | 06.005 | 5470-20- 608 | 4 | 933 | 204,68 | | |
| 79. | Simmel Paul.M.u.S. | 652.04 | 26.003 | 7075-20- 128 | 4 | 933 | 163,81 | | |
| 80. | SG Gründinger | 652.04 | 05.007 | 7569-20- 234 | 4 | 933 | 153,86 | | |

MS-BEZ.: RV-GENERAL-MS (ALT-JÄHR-JG.)
 MS-ART: 06 BESTE TAUBEN
 MS-MOD.: HAT-HAT PUNKTSYSTEM= AS-PKT

MS.NR.:1167-107 (652/04-Wal)

MS-FLG.: 04 05 06 08 09 10 11 12 13 14 15 35 36 37 38 39
 ** ** ** ** ** ** ** ** ** ** ** ** ** ** ** ** ** ** **** ** ** ** **** ** **

| RANG | NAME | RG | RV | VV | ZZZ | MSCH | M | W | PRS | KM | PUNKTE |
|------|-----------------------|--------|--------|----|-----|------|----|-------|---------|----|--------|
| 1. | SG Kern&Liebl Sandra | 652.04 | 27.001 | 00 | 5 | 1 | 52 | 18503 | 3438,68 | | |
| 2. | Schönberger Josef | 652.04 | 25.002 | 00 | 4 | 2 | 51 | 18023 | 2922,43 | | |
| 3. | Gubisch F.,Chr.,Jonas | 652.04 | 06.005 | 00 | 3 | 3 | 50 | 17059 | 3270,21 | | |
| 4. | Blöchl F/F/Annalena | 652.04 | 07.004 | 00 | 2 | 4 | 47 | 16713 | 3240,40 | | |
| 5. | Hutterer A.u.M. | 652.04 | 26.001 | 00 | 3 | 3 | 46 | 16202 | 3143,36 | | |
| 6. | Geier L.+D.+A.+Ella | 652.04 | 09.012 | 00 | 4 | 2 | 44 | 14730 | 2798,06 | | |
| 7. | Simmel Paul.M.u.S. | 652.04 | 26.003 | 00 | 3 | 3 | 43 | 14866 | 2540,16 | | |
| 8. | Leuchtner A. | 652.04 | 02.005 | 00 | 2 | 4 | 38 | 12766 | 1960,38 | | |
| 9. | Anetzberger Willi | 652.04 | 17.001 | 00 | 3 | 3 | 37 | 13102 | 2070,78 | | |
| 10. | Penzenstadler H.u.S. | 652.04 | 14.005 | 00 | 2 | 4 | 37 | 13063 | 2126,30 | | |
| 11. | Blöchl Gerhard | 652.04 | 07.006 | 00 | 2 | 4 | 31 | 10578 | 1191,53 | | |
| 12. | SG Weber/Simet | 652.04 | 06.003 | 00 | 5 | 1 | 31 | 10504 | 1361,12 | | |
| 13. | Bretl J. u. Frau | 652.04 | 14.004 | 00 | 2 | 4 | 30 | 9653 | 1576,65 | | |
| 14. | Freund Heinrich | 652.04 | 27.003 | 00 | 5 | 1 | 30 | 9332 | 1591,09 | | |
| 15. | Hoffmann Joh.u.Wolfg | 652.04 | 25.005 | 00 | 3 | 3 | 28 | 8825 | 1643,07 | | |
| 16. | Penzenstadler Mich. | 652.04 | 26.004 | 00 | 3 | 3 | 27 | 8918 | 1441,00 | | |
| 17. | Schauberger M. | 652.04 | 08.002 | 00 | 6 | 0 | 27 | 7637 | 1806,10 | | |
| 18. | SG Siglmüller | 652.04 | 26.006 | 00 | 3 | 3 | 21 | 5293 | 896,15 | | |
| 19. | Blöchl Josef | 652.04 | 06.004 | 00 | 3 | 1 | 20 | 7029 | 1269,24 | | |
| 20. | SG Gründinger | 652.04 | 05.007 | 00 | 2 | 2 | 19 | 5534 | 1446,96 | | |
| 21. | Schießl Konrad | 652.04 | 05.006 | 00 | 5 | 1 | 14 | 4938 | 529,31 | | |
| 22. | Bichlmeier Fr.&.Fra. | 652.04 | 04.006 | 00 | 6 | 0 | 14 | 4234 | 778,69 | | |
| 23. | Mader A/Lenz Robin | 652.04 | 04.001 | 00 | 2 | 4 | 11 | 3795 | 421,47 | | |
| 24. | Denk Josef | 652.04 | 25.001 | 00 | 3 | 3 | 11 | 2376 | 360,90 | | |
| 25. | Siglmüller Maximil. | 652.04 | 25.003 | 00 | 0 | 2 | 10 | 3624 | 513,74 | | |
| 26. | Hellauer L. | 652.04 | 08.001 | 00 | 2 | 0 | 8 | 1998 | 461,46 | | |

RV-Ehrenpreise Waldkirchen

| Stifter | Betrag | Serie | Gewinner | Konkurs |
|-----------------------|--------|-----------------------|---------------|------------------|
| RV Waldkirchen | 5.- | 1. Preistaube | Schauberger M | 1. |
| Penzenstadler Michael | 5.- | 5 schnellsten Tauben | SG Gründinger | 3,4,9,13,19. |
| Bretl Johann | 5.- | 10 schnellsten Tauben | SG Geier | 5,6,12,14,27,ff. |
| SG Gründinger | 5.- | 30. Preistaube | SG Kern/Liebl | 52. |

RV-Ehrenpreis Passau 1 ben. Tb. (AS99)

- 1. Allmannsberger/Kainz 2. Konkurs
- 2. SG Pils / Tschache 3. Konkurs
- 3. Krenn M.u.F. 61. Konkurs

Allen Gewinnern einen herzlichen Glückwunsch!!!